

Full Product Range Brochure



WHY CHOOSE ROCKALL SAFETY?

Since 1995, Rockall Safety has been one of the UK's top suppliers of professional safety equipment to thousands of clients from a wide range of industries in the private and public sectors, including food & beverage, water & wastewater, petrochemicals, construction, as well as oil & gas.

We specialise in gas detection, monitoring, and measuring and offer a comprehensive product range which includes fixed and portable gas detectors, respiratory protection, and diagnostics equipment.

Our dedicated technical sales specialists are fully trained and certified to advise individual clients on the services and products they need to achieve the highest standards of safety.

With an established team of in-house engineers, trained and certified directly by manufacturers, our product range is calibrated, and tested to the highest standards prior to dispatch, which ensures that what you receive from us is immediately fit for field use upon arrival.

Rockall is an award-winning company which has successfully partnered with the world's leading gas safety manufacturers such as Honeywell, Dräger, and Crowcon to provide a wide range of products that cover various applications. We are even proud to be an Approved Service Point (ASP) for Dräger Master Service Centre and BW by Honeywell.

Our main principles

We pride ourselves on providing excellent customer service, reliable gear, and technical support to our customers. Operating nationwide, our success as a business is based on our customer-oriented approach. We offer a prompt and efficient service, best prices, and most importantly the right safety solutions to meet your individual requirements.

Our Services

Choosing Rockall ensures that you receive only the most reliable equipment available on the market, calibrated and tested by our certified engineers.

We also offer after-sales repair and maintenance checks on your safety devices, ensuring that these are up-to-date and function properly.



Portable Gas

Portable gas detectors are compact devices used to detect hazardous gases in various environments. They ensure safety by providing real-time monitoring, alarming users of dangerous gas levels, and are essential for industrial, environmental, and emergency response applications.



Fixed Gas

Fixed gas detectors are permanently installed devices used to continuously monitor and detect hazardous gases in specific areas. They enhance safety by providing constant surveillance, triggering alarms, and integrating with safety systems in industrial, commercial, and residential settings.



Escape & Rescue

Escape and rescue involve strategies and procedures to safely evacuate individuals from hazardous situations and provide aid. These critical operations require proper planning, training, and equipment to ensure timely, efficient, and safe removal of individuals from danger zones.



Confined Space

Confined spaces are areas with limited entry and exit points not designed for continuous occupancy. These spaces, like tanks, tunnels, and manholes, pose significant hazards, including poor ventilation, making safety measures essential for workers entering such environments.



Servicing & Hire

Rockall Safety ensures your gas detector is serviced to the highest standards. Our expert team provides thorough maintenance, calibration, and repair, guaranteeing reliable performance and compliance with safety regulations, keeping your equipment ready for any hazardous environment.



Fall Arrest

Fall arrest systems are safety mechanisms designed to prevent or stop falls from heights. They include harnesses, lanyards, and anchor points, ensuring worker safety in construction, maintenance, and other high-risk industries by minimizing injury risks associated with falls.

PORTABLE GAS DETECTORS

Portable gas detectors are a must-have piece of wearable safety equipment used to detect a wide range of toxic gases, explosive atmospheres, and oxygen levels.

Used across a wide range of industries, these detectors are critical to the well-being of personnel operating in hazardous areas. There are many different types of Portable detectors available, each with its specific features and benefits.

When choosing a monitor, it is important to consider the specific hazards that workers will be exposed to. It is also important to consider the size and weight of the detector, as well as the battery life.

Benefits:

They can help to prevent accidents and injuries by detecting hazardous gases before they reach harmful levels. Gas detectors can also help to improve productivity by reducing the number of lost workdays due to illness or injury.

Portable gas detectors are a valuable safety tool that can help protect workers from the hazards of hazardous gases.



FIXED GAS DETECTORS

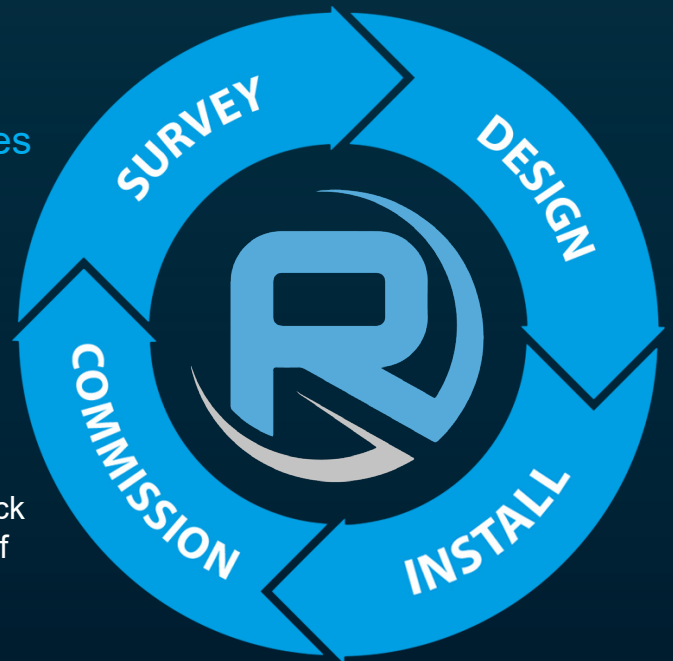
We supply fixed gas detectors from the best gas detection manufactures in the world.

We supply, install, and service a wide range of Fixed Gas Detection Systems for companies across the UK mainland, providing a single point of contact from start to finish.

Our Comp-Ex Certified Engineers work closely with customers to understand their specific needs, ensuring that their operational systems, safety procedures and regulations are managed correctly.

Rockall Safety understands that a 24-hour round-the-clock assurance for your staff is vital, whilst a reliable stream of data is a must for effective systems analysis.

Working with industry-leading brands, we can assure our clients that the equipment installed is the best you can get. Additionally, our rates for servicing, installation and equipment costs will always be second to none.



These rugged devices continuously monitor for hazardous gases like combustible materials, oxygen deficiency, and toxic fumes. With some models boasting advanced features like data logging and wireless.



BW Clip 2/3 Year Single-Gas Detector

Just turn on the device and it runs continuously - no need for calibration, sensor replacement, battery replacement or battery charging. That means great reliability and no downtime. Compatible with both the MicroDock II and the IntelliDoX instrument management systems.

- Buy
- Hire



BW Solo Single-Gas Detector

Honeywell BW Solo is a single-gas detector pre-configured to protect against any one of a wide range of hazardous gases. With its small lightweight design, the Solo is ideal for working with harnesses at height or whilst working in confined spaces – offering a less cumbersome alternative to larger portable gas detectors.

- Buy
- Hire
- Service



BW Icon / Icon + Multi-Gas Detectors

Building on the advanced technology of its predecessors, the BW Icon and Icon Plus+ presents the latest and greatest in a long line of Honeywell gas detectors.

Both can run for up to two months on a single charge have Bluetooth connectivity and detect CO/H2S/O2 & IR LEL or SO2/H2S/O2 & IR LEL.

- Buy
- Hire
- Service



BW Microclip XL Multi-Gas Detector

The BW GasAlertMicroClip XL portable multi-gas detector can be configured to monitor combinations of Combustible gases.

The Microclip XL detector has been redesigned and rebranded as the BW Gas Alert Micro Clip XL and given a brand-new cutting-edge battery providing 18 hours operation.

- Buy
- Hire
- Service



BW X3 Multi-Gas Detector

A part of the BW series, the GasAlert MicroClip X3 gas detector provides you with over a dozen configurations to choose from.

This allows you to tailor it to suit your requirements; ideally suited to a wide range of hazardous environments and applications.

- Buy
- Hire
- Service



Honeywell Flex 4 Multi-Gas Detector

The Honeywell BW Flex 4 is a portable multi-gas detector that offers a high level of flexibility and reliability for use in a wide range of hazardous environments. It can be configured to detect up to four different gases simultaneously, and it features several advanced features that make it ideal for a wide range of applications.

- Buy
- Hire
- Service



BW Max XT II Multi-Gas Detector

Monitor up to 4 gases simultaneously with the BW Gas Alert Max XT II gas monitor. This durable gas detector is water-resistant and comes with a rechargeable battery that can last up to 13 hours. Additionally, the XT provides standard event logging and is fully compatible with the Honeywell Microdock II.

- Buy
- Hire
- Service



Honeywell BW Ultra Multi-Gas Detector

The Honeywell BW Ultra 5 Gas Detector is a portable, handheld gas detector that can measure five different gases simultaneously: oxygen (O2), lower explosive limit (LEL), hydrogen sulphide (H2S), carbon monoxide (CO), and a gas of your choice.

- Buy
- Hire
- Service

The Honeywell Rae System stands out as a trusted brand for portable and wireless gas detection solutions. These professional-grade instruments cater to various industries, including oil and gas, chemical, and pharmaceutical. Notably, the Rae lineup includes Photoionization Detectors (PIDs) adept at identifying a wide range of volatile organic compounds (VOCs).



MultiRae

MultiRAE is the most advanced portable chemical detector on the market providing up to six gas sensors and wireless portability.

This multi-gas monitor delivers realtime access to instrument readings and alarm status from any location.

- Buy
- Hire
- Service



MultiRae Lite

This multi-gas monitor provides versatile, customizable detection and monitoring of up to six gases.

Available in both pumped and diffused air models, with more than 25 sensors to choose from.

- Buy
- Hire
- Service



MultiRae Pro

This industry-leading wireless device monitors both chemical threats and gamma radiation and is the only multithreat monitor with parts per billion precision. With the ability to wirelessly transmit threat and alarm data in real time to a central command station, the MultiRAE Pro offers improved visibility and awareness.

- Buy
- Hire
- Service



MultiRae Benzene

The MultiRAE Benzene monitor has the ability to make a quick benzene-specific assessment ("snapshot") measurement.

Additionally, it can provide comprehensive support for approximately 20 intelligent interchangeable sensor options.

- Buy
- Hire
- Service



MiniRae Lite

This affordable hand-held monitor for VOCs provides superior reliability for leak detection and environmental cleanup and remediation.

With a photoionisation detector that measures from 0-5,000 ppm, a built-in flashlight, and a rugged housing, it's perfect for a range of applications.

- Buy
- Hire
- Service



MiniRae 3000

Whether for industrial hygiene, leak detection, or HazMat response, the MiniRAE 3000 delivers the most advanced VOC monitoring capabilities on the market.

- Buy
- Hire
- Service



UltraRae 3000

The UltraRAE 3000 is the most advanced compoundspecific monitor on the market and one of the few monitors that deliver accurate measurements of benzene from 50 ppb to 200 ppm and other VOCs up to 10,000 ppm.

- Buy
- Hire
- Service



PPBRae 3000

The ppbRAE 3000 is trusted by the world's leaders in CBRNE, HazMat Response, Civil Defense, Oil & Gas, and other hazardous environments. Using a 3rd gen photoionisation detector (PID) and built-in correction factors for more than 200 compounds, the ppbRAE 3000 is the most advanced VOC monitor for parts-per-billion available.

- Buy
- Hire
- Service



Touchpoint Pro Controller

Honeywell's Touchpoint Pro makes gas control system design, installation, configuration and operation simple. Touchpoint Pro uses a 'building block' approach, providing unrivalled flexibility. The building block approach employed by Touchpoint Pro delivers real value by being able to adapt to each unique system requirement.

Buy Service



Touchpoint™ Plus Controller

An easily configurable, wall mounted control system that supports up to sixteen channels of gas detection.

Its intuitive user interface and modular approach enables you to take control of your safety system and configure it to meet your needs for a wide range of applications.

Buy Service



Searchline Excel™ Plus

The Searchline Excel™ Plus delivers unsurpassed uptime with robust detection in some of the harshest conditions.

The Excel™ Plus is a short / medium-range gas detector designed for global oil and gas applications, upstream and downstream, onshore and offshore.

Buy Service



Searchline Excel™ Edge

The Searchline Excel™ Edge Flammable Hydrocarbon gas detector delivers long-range coverage and protection for perimeter and fence-line monitoring.

The Searchline Excel™ Edge helps protect your people, facilities and processes from combustible gas leaks.

Buy Service



Searchzone Sonik™

A robust and reliable gas-leak detection device, Searchzone Sonik will efficiently "hear" the loss of containment of any high-pressure gas within its listening zone.

The acoustic gas leak detector will respond quickly to a gas leak within a sensing range radius of typically 20m (65 ft).

Buy Service



XNX™ Universal Transmitter

XNX supports Electrochemical, Infrared and Catalytic Bead gas monitors and uses standard 4-20mA wiring and HART: options include Modbus, Fieldbus (pending) up to three relays and a local Hart Adapter for configuration and diagnostics using existing HART handheld devices.

Buy Service



OELD (Bluetooth Enabled Local Display)

The Optima Excel Local Display (OELD) is a smart junction box for the Searchpoint Optima Plus and Searchline Excel infrared detectors for flammable hydrocarbons. Pair a smartphone with OELD smart junction box, to perform tasks for your Searchpoint Optima Plus and Searchline Excel detectors wirelessly.

Buy Service



Sensepoint XRL

A fixed point gas detector with Bluetooth that connects the gas detector to a smartphone or tablet running the Sensepoint gas detector app. Available as a flammable gas detector for the detection of potentially explosive gases, or as a toxic gas detector for a range of toxic gas hazards commonly found in industrial applications.

Buy Service



Series 3000 MkII / MkIII Transmitters With Sensor

2-wire loop powered toxic and Oxygen gas detector for use in potentially explosive atmospheres - explosion proof and intrinsically safe versions. These low powered gas detectors all feature a loop powered 4-20 mA connection, making them ideal for both new and retrofit installations.

Buy Service



Sensepoint XCD

Sensepoint XCD now has remote monitoring capabilities for its toxic and Oxygen sensors.

Its remote capability is designed to offer excellent flexibility of use and is an ideal solution for hard-to-reach locations or areas where the transmitter needs to be separate from the sensor.

Buy Service



Sensepoint XCD RFD

Specifically designed for use with remotely mounted flammable gas sensors.

This configuration is ideal for applications where the sensor is required to be mounted remotely from the transmitter in areas where temperatures are well above ambient (up to 150°C/302°F), or that are difficult to access.

Buy Service



Sensepoint XCD RTD

Sensepoint XCD RTD from Honeywell Analytics makes it easy on your maintenance team, time and budget when faced with the challenge of monitoring toxic gases in Class I, Div. 2 areas. You can mount the unit up to 100 feet from the transmitter to obtain maximum gas detection coverage in areas not easily accessible.

Buy Service

“With Honeywell’s industrial gas detectors, you never have to trade off on the flexibility or reliability of your control system, making the best decisions at a glance”



Searchpoint Optima Plus Point Infrared

Searchpoint Optima Plus is an infrared point Hydrocarbon gas detector certified for use in potentially explosive atmospheres.

The unit’s infrared detection principle offers the fastest speed of response and fail-to-safe operation.

Buy Service



FSL100 Flame Detectors

A range of middle market Optical Flame Detectors joining the HA FSX High End products. Addresses a wide range of fire protection applications both indoors and outdoors. With 3 versions to cover a wide range of flaming fires: Ultraviolet (UV), Ultraviolet/Infrared (UV/IR) and Triple Infrared (IR3).

Buy Service



RAEGuard 2 PID

RAEGuard 2 PID is a fixed photoionisation detector (PID) that measures a broad range of volatile organic compounds (VOCs). The RAEGuard 2 PID operates on 10 to 28 VDC and provides an analog (4-20mA) three-wire signal output and RS-485 Modbus digital signal output.

Buy Service



FS20X Flame Detector

Based on the foundation of the highly successful and reliable SS4 Flame Detector, the FS20X Flame Detector represents a quantum leap in integrating Infrared and Ultraviolet sensing technologies. The FS20X is a Multi-Spectrum and UV/Dual IR/ VIS Flame Detector with a proven UV solar-blind sensor.

Buy Service

At Rockall, we stock a comprehensive range of products from portable and fixed gas detection to chemical suits, bump test gas, industrial escape sets, gas detection tubes and many more. We have proudly worked alongside Dräger for many years and have come to know the high standards of quality and reliability of their products as a benchmark.



Dräger PAC 6000/6500 Single Gas Detector

In contrast to the Pac 6000's two-year lifespan with a non-replaceable sensor, the Pac 6500 boasts a virtually indefinite operational life cycle. This extended functionality is achieved through the implementation of a user-serviceable design that incorporates readily interchangeable batteries, sensors, and filters.

Buy



Dräger PAC 8000 Single Gas Detector

The Dräger PAC 8000 is a great choice for individuals who require unwavering safety in tough environments.

This non-disposable, single-gas monitor boasts exceptional reliability and precision, singularly detecting hazardous concentrations of a diverse range of gases.

Buy Hire Service



Dräger X-am 2500 Multi-Gas Detector

The Dräger X-am 2500 was especially developed for use as personal protection. This 1 to 4 gas detector reliably detects combustible gases and vapours, as well as O₂, CO, NO₂, SO₂ and H₂S. Reliable fully mature measuring technology, durable sensors and easy handling guarantee a high degree of safety with extremely low operating costs.

Buy Hire Service



Dräger X-am 2800 Multi-Gas Detector

The Dräger X-am 2800 is a multi-gas detector that measures up to four gases and is equipped with a particularly shock-resistant CatEx sensor.

It offers live data transmission and powerful fleet management with the Dräger Gas Detection Connect software.

Buy Hire Service



Dräger X-am 5000 Multi-Gas Detector

The X-am 5000 can measure up to five different gases simultaneously using its state-of-the-art XXS sensors.

The X-am 5000 is the ideal personal gas monitoring solution and can be used across a wide range of industrial environments, including explosive areas.

Buy Hire Service



Dräger X-AM 5100 Single-Gas Detector

For manufacturing petrochemical products, aseptic packing, or handling of rocket fuel: the Dräger X-am 5100 portable single-gas detector guarantees that you use the safest methods possible for handling HF, HCl, H₂O₂ or hydrazine - thanks to proven Dräger sensor technology and a device design customised to reactive gases.

Buy Hire Service



Dräger X-am 5600 Multi-Gas (IR) Detector

Featuring an ergonomic design and innovative infrared sensor technology, the Dräger X-am 5600 is the smallest gas detection instrument for the measurement of up to 6 gases. Ideal for personal monitoring applications, this robust and water-tight detector provides accurate, measures explosive, combustible and toxic gases.

Buy Hire Service



Dräger X-am 8000 Multi-Gas Detector

Clearance measurement was never this easy and convenient: The Dräger X-am 8000 measures up to seven toxic as well as flammable gases, vapours and oxygen all at once. Either in pump or diffusion mode. Innovative signalling design and handy assistant functions ensure complete safety through-out the process.

Buy Hire Service



Dräger VarioGard® 3300 IR Transmitter

The Dräger VarioGard® 3300 IR is a digital transmitter with an integrated infrared optical DrägerSensor®. It detects the flammable gases methane and LPG in the ambient air. This affordable system component makes it easier for you to configure a gas warning system.

Dräger VarioGard® 2300 IR

In many fields of work, quick and reliable gas detection is a must. This is why we offer the Dräger VarioGard® stationary gas detector range. The Dräger VarioGard® 2300 IR monitors possible gas leaks of methane or LPG.

Dräger VarioGard 3200 CAT Transmitter

The Dräger VarioGard® 3200 CAT is a digital transmitter with an integrated catalytic DrägerSensor®. It detects the flammable gases methane and LPG in the ambient air. This affordable system component makes it easier for you to configure a gas warning system.

Dräger PointGard 3700

The Dräger PointGard 3700 is a complete 1-channel gas detection system for measuring combustible gases or vapours in ambient air. In its robust yet compact housing with IP66 protection class, you have all the necessary alarm equipment needed.

Buy Service

Buy Service

Buy Service

Buy Service



Dräger Polytron® 8700 IR

The Dräger Polytron® 8700 IR is an advanced explosion proof transmitter for the detection of combustible gases in the lower explosion limit (LEL). It uses a high performance infrared Dräger PIR 7000 sensor, which will quickly detect most common hydrocarbon gases.

Dräger Polytron® 5700 IR

The Dräger Polytron® 5700 IR is a cost effective explosion-proof transmitter for the detection of flammable gases in the lower explosive limit (LEL). It uses a high performance infrared Dräger PIR 7000 sensor that will quickly detect most common hydrocarbon gases.

Dräger Polytron® 5310 IR

The Dräger Polytron® 5310 IR is a cost effective explosion-proof transmitter for the detection of flammable gases in the lower explosion limit (LEL). It uses an infrared DrägerSensor® IR that can be configured for methane, propane, or ethylene.

Dräger Polytron® 8100 EC

The Polytron® 8100 EC is Dräger's top of the line explosion-proof transmitter for the detection of toxic gases or oxygen. It uses a high performance plug and play electrochemical DrägerSensor to detect a specific gas. Besides having a 3-wire 4 to 20 mA analog output with relays, it also offers HART®, Modbus and Fieldbus.

Buy Service

Buy Service

Buy Service

Buy Service



Dräger Polytron® 5200 CAT

The Dräger Polytron® 5200 CAT is a cost-effective explosion-proof transmitter for the detection of flammable gases in the lower explosion limit (LEL). It uses a catalytic bead DrägerSensor® Ex that will detect most flammable gases and vapours.

[Buy](#) [Service](#)



Dräger Polytron® 8310 IR

The Dräger Polytron® 8310 IR is an advanced explosion proof transmitter for the detection of combustible gases in the lower explosion limit (LEL). It uses an infrared DrägerSensor® IR that can be configured for methane, propane or ethylene.

[Buy](#) [Service](#)



Dräger Polytron® 8200 CAT

The Dräger Polytron® 8200 CAT is an advanced explosion-proof transmitter for the detection of flammable gases in the lower explosion limit (LEL). It uses a catalytic bead DrägerSensor® Ex that will detect most flammable gases and vapours.

[Buy](#) [Service](#)



Dräger X-node

Dräger X-node is a wireless IoT solution for process monitoring and analysis. The system solution converts reliable measurement data - gas concentration, temperature, humidity and pressure - from the X-node device into valuable information that you can access, analyse, visualise, monitor and store online via the X-node Hub.

[Buy](#) [Service](#)



Dräger Polytron® 6100 EC WL

The Dräger Polytron 6100 EC WL is a wireless transmitter for continuous monitoring of toxic gases and oxygen. The intrinsically safe and SIL2-rated transmitter features completely wireless signal transmission and power supply. The internal battery pack allows the transmitter to operate continually for up to 24 month.

[Buy](#) [Service](#)



Dräger Pulsar 7000 Series

The Dräger Pulsar 7000 Series are stationary open path gas detectors for the detection of explosive hydrocarbons in gases and vapours. The robust design and the extremely rapid response time make the Dräger Pulsar 7000 Series a dependable solution for your requirements in the oil and gas industry.

[Buy](#) [Service](#)



Dräger PIR 3000

The Dräger PIR 3000 is an explosion proof infrared gas detector for continuous monitoring of combustible gases and vapors. Based on a stainless steel SS 316 enclosure as well as on a good measuring performance, this transmitter offers an excellent price-performance-ratio.

[Buy](#) [Service](#)



Dräger PIR 7000

The Dräger PIR 7000 is an explosion proof point infrared gas detector for continuous monitoring of flammable gases and vapours. With its stainless steel SS 316L enclosure and drift-free optics this detector is built for the harshest industrial environments, e.g. offshore installations.

[Buy](#) [Service](#)

“At Dräger, safety is our top priority, whether it’s indoor applications or challenging outdoor environments. Our comprehensive monitoring systems are designed to be robust and highly reliable, even in demanding conditions.”

Able to accommodate various gas settings, including CO, H2S, O2, and SO2, this generous range of gas monitors provides you with a seamless user experience that will streamline your workday.



Crowcon Clip SGD

SDG is designed for use in hazardous areas and offers reliable fixed life span monitoring in a compact, maintenance-free package. Clip SGD has a 2-year life and is available for hydrogen sulphide (H2S), carbon monoxide (CO) or oxygen (O2).

Buy



Crowcon Gasman

The Crowcon Gasman is a compact and lightweight package designed for use in the toughest environments. Perfect for customers who need more sensor options, TWA and data capability.

It comes available with long-life O2 sensor, MPS sensor technology.

Buy Hire Service



Crowcon Tetra 3

The Tetra 3 multi-gas monitor is a compact, robust and easy-to-use diffusion based detector. Single button operation, small size and clear top-mounted display make it a favourite in the market amongst those working in demanding industrial environments, such as those in the water, telecoms, food, brewing or hydrocarbons sectors.

Buy Hire Service



Crowcon T4

Crowcon's toughest portable yet, T4 is durable by design and includes an integrated rubber boot as standard. An optional clip-on filter cover, which is easily removed and replaced, ensures sensors are protected in the dirtiest environments. Drop tested to 4m and well protected from water ingress through IP65 and IP67 certification.

Buy Hire Service



Crowcon T4x

Our new and improved portable multi gas monitor you can take almost anywhere. Now with added industry leading sensor technologies to improve worker safety and cost you less over time.

Exclusively with long-life O2 and MPS™ sensor technologies.

Buy Hire Service



Crowcon Gas Pro

Gas-Pro is for detection of a variety of multiple gas configurations as well as confined space process guidance by offering 5 gas support including a dedicated pre-entry check mode and optional pump feature.

Now supported by the I-Test bump test and calibration station.

Buy Hire Service



Crowcon Triple Plus+

Rugged, reliable, easy to use device with over 90,000 units being sold to oil and gas, chemical, utility and manufacturing companies worldwide.

Intrinsically safe, the Triple Plus+ provides enhanced facilities for safety and detector fleet managers.

Buy Hire Service



LaserMethane Smart

The LaserMethane Smart is a compact and portable methane gas detector with a camera to shoot an inspection point. Suitable those working in areas with gas distribution systems, underground gas storage, gas distribution station, gas processing plant, gas compression and gas storage.

Buy Service



Gasmonitor Plus

Gasmonitor Plus is Crowcon's flexible 19" rack-based control system for gas detection monitors. This microprocessor-controlled unit is used throughout the world, both onshore and offshore. Gasmonitor Plus can monitor up to 16 gas detection monitors or 32 fire zones per rack.

Buy Service



GM Addressable Controllers

Crowcon's range of addressable gas detection controllers are easy to configure and are very user friendly.

There are 3 controller options with different channel input variables.

Buy Service



Multiscan++MED

The Multiscan++MED control panel has the capability to manage and monitor up to 64 gas detectors and has been purposely designed and certified to meet with the requirements of the marine industry, certified by the Lloyd's Register in accordance with MED/3.54 Regulation.

Buy Service



Multiscan++PK

The Multiscan++PK gas detection control panel supports a maximum 256 detectors and has been designed with car parks in mind. It is compliant with the EN 50545-1 standard, which defines the requirements for the detection of CO and NO2 in car parks and tunnels.

Buy Service



Multiscan++S2

The Multiscan++S2 is a SIL2 certified, advanced multifunction gas detection control panel designed to meet the need for highly flexible systems. The system can manage and monitor up to 256 gas detectors and has a range of self-testing facilities to take place to detect and localise possible failures.

Buy Service



Vortex

Vortex is our most flexible gas controller package that can be customised to meet your site requirements, however complex, without the need for extensive cabling.

Buy Service



Vortex FP

Vortex FP and Vortex FP Compact are ATEX certified Exd Flameproof gas detector control panels for use in Zone 1 or Zone 2 hazardous areas such as on offshore production platforms or within refineries. Both offer all of the standard Vortex features, as well as a display fitted with magnetic switches which enable the system to be interrogated.

Buy Service



Gasmaster

Crowcon's enhanced Gasmaster gas detector control panel has a modular design meaning users only need purchase the required number of input modules. It can easily be extended by adding more modules at a later date.

Buy Service



SMART S-MS

The SMART S-MS is a SIL2 certified fixed gas detector designed to meet the toughest industrial standards.

The detector is made for the requirements of heavy industries and comes with the option of aluminium or stainless steel enclosure and Optional HART and 3-relay card.

[Buy](#) [Service](#)



SMART S-MS MED

The SMART S-MS MED is designed specifically for use in marine environments and is certified by the Lloyd's Register in accordance with MED/3.54 Regulation. The device is SIL2 certified and has options for both catalytic and infrared sensors for the detection of flammable gases.

[Buy](#) [Service](#)



SMART 3G-C2

The SMART3G-C2 fixed gas detector has sensor options for detecting more than 50 toxic, flammable and refrigerant gases. It is ideal for a variety of industrial applications and harsh environments. The device also features ongoing system self-diagnosis and optional RS485 interface for Modbus communication.

[Buy](#) [Service](#)

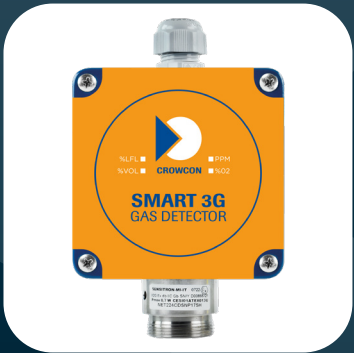


SMART 3G-D2

The SMART3G-D2 fixed gas detector has sensor options for detecting more than 50 toxic, flammable and refrigerant gases. It is ideal for a variety of industrial applications and harsh environments. The device features non-intrusive calibration and a 4-digit back-lit display for the gas concentration reading.

[Buy](#) [Service](#)

“These fixed gas detectors are used in many applications where reliability, dependability and lack of false alarms are instrumental to efficient and effective gas detection.”



SMART 3G-C3

The SMART3G-C2 fixed gas detector has sensor options for detecting more than 50 toxic, flammable and refrigerant gases. It is ideal for a variety of industrial applications and harsh environments. The device also features ongoing system self-diagnosis and optional RS485 interface for Modbus communication.

[Buy](#) [Service](#)



SMART P

The SMART P detectors have been designed to fulfil the latest European Standard on gas detection in car parks, with the capability to detect CO, NO2 and petrol vapours. The P-2 is a dual sensor detector able to measure CO along with either NO2 or petrol vapours and both devices offer RS485 communication as standard.

[Buy](#) [Service](#)



SMART 3NC

The SMART3 NC is a point gas detector for safe areas with a number of features for easy operation and maintenance such as ongoing system self-diagnosis, seamless installation and maintenance via handheld keypad and options for relay output and Modbus communication.

[Buy](#) [Service](#)



TXgard-IS+

TXgard-IS+ is an Intrinsically Safe (I.S.) toxic and oxygen gas detector with local LCD display. A very wide choice of sensors are available for use in a variety of applications. The TXgard-IS+ toxic gas detectors are ATEX certified for use in Zone 0, 1 or 2 hazardous areas and also UL and cUL certified for use in Division 1 or 2 hazardous areas.

[Buy](#) [Service](#)



Xgard Bright

Xgard Bright is a versatile platform offering flammable and toxic gas detection and oxygen monitoring, while providing ease of operation and reduced installation costs.

Xgard Bright comes with an Alarm and Fault relay as standard as well as optional HART communications.

[Buy](#) [Service](#)



XgardIQ

The new XgardIQ, our most intelligent fixed gas detector, increases safety by minimising the time operators must spend in hazardous areas.

Available fitted with a variety of sensors for flammable, toxic, oxygen or fixed H2S gas detection.

[Buy](#) [Service](#)



IRmax

IRmax is an ultra-compact infrared (IR) fixed gas monitor that delivers rapid, fail-safe detection of hydrocarbon gases and vapours. The IRmax gas detection system offers the choice of a detector only, a local gas/status display, a remote gas/status display or non-intrusive calibration via an I.S. calibration tool or hand-held HART communicator.

[Buy](#) [Service](#)



Xgard

The Xgard range is a comprehensive selection of fixed multi gas detectors that meet the diverse requirements for gas detection in industries throughout the world. This includes many water treatment, oil and gas, power, research facility and manufacturing installations.

[Buy](#) [Service](#)



FGard H2 Flame Detector

Introducing the Fgard H2 by Crowcon, a breakthrough in Hydrogen Flame Detection.

The FGard H2 delivers first-in-class flame detection with intelligent heated optics for clearer results and advanced optical verification to greatly reduce false alarms.

[Buy](#) [Service](#)



FGard IR3 Flame Detector

The Crowcon FGard IR3 flame detector is an explosion proof multi spectrum IR flame detector. FGard delivers superior performance, responding to hydrocarbon liquid fuel and gas fires at long distances.

[Buy](#) [Service](#)



FGard UVIR Flame Detector

The Crowcon FGard UVIR flame detector is an explosion proof ultraviolet-infrared flame detector, offering superior detection of hydrocarbon fires which are not detectable in the visible spectrum.

[Buy](#) [Service](#)



BUMP TESTING

IT TAKES LESS THAN A MINUTE

One of the only ways to ensure that your gas monitor will perform reliably out on a project, a manual bump test will typically take between 40 - 60 seconds.

Without this added precaution, serious accidents in the workplace can be caused due to inaccuracies in your gas detector. The bump test exposes the monitor to gas concentrations, which compares the sensor's response to the response generated by a calibration gas (of a known concentration).

WHY USE CALIBRATION GAS?

- Verify that your monitor effectively responds to the presence of gas and is fit for use.
- Test that the audio, visual and vibration alarms are in working order.
- Assess the accuracy of the monitor and calibrate its configuration settings, if required.
- Provides added peace of mind when working in hazardous environments.

WHAT YOU NEED

MANUAL BUMP TESTING

- Gas Cylinder with mix to suit detector
- Fixed Flow Regulator
- Calibration Cup to suit detector
- Tubing

CALIBRATION DOCK TESTING

- Calibration Dock to suit gas detector
- Cylinder with mix to suit detector
- DFR Regulator
- Tubing



BUMP TEST GAS

We can quickly help you choose the right bump test gas for your detectors and have it delivered within 48 hours.

With such a wide spectrum of measurements available to choose from, our specialists are on hand to offer support, from initial enquiry to aftercare, we will be there when you need us.



AREA MONITORS

In the complex world of industrial safety, gas detection area monitors assume the role of unsung heroes. These portable sentinels, strategically positioned in refineries, chemical plants, and confined spaces, act as tireless noses, continuously sniffing the air for the presence of hazardous gases.

Unlike personal gas detectors worn by individuals, area monitors offer an expanded range of protection, safeguarding larger environments and alerting nearby workers to potential dangers before they reach harmful levels. They stand as guardians of the invisible, ensuring the safety of personnel and preventing catastrophic incidents. Through their unwavering vigilance, these silent sentinels play a vital role in fostering safe and productive work environments.

CROWCON
Detecting Gas Saving Lives

blacklinesafety

Dräger

Honeywell



Crowcon Detective

This product uses a proven Ricochet mesh network, which automatically analyses the best connection in the network to communicate to. This ensures that the alarm is always received by nearby users, even if the signal between devices is weak. This eliminates the need for cables, which can be a tripping hazard, get broken or tangled as you work.



Blackline G7 Exo

The world's first direct-to-cloud area monitor that delivers ultimate visibility into your entire facility and workforce. With integrated 4G and optional satellite connectivity, the G7 EXO automatically links to the Blackline Safety Cloud where it can integrate and work alongside employee-worn G7 devices.



Dräger X-Zone 5500

The Dräger X-Zone 5500 transforms the Dräger personal gas detection instruments X-am 5000, 5100 and 5600 into innovative area monitoring devices for a wide range of applications.

Up to 25 Dräger X-Zone 5500 can be automatically interconnected to form a wireless fence line.



Honeywell RigRat

The BW RigRat is highly configurable and can monitor up to six different airborne hazards at once, including oxygen, combustibles, and toxic gases.

This detector features a wireless safety perimeter that can be used to create a virtual boundary around a work area.

Buy Hire Service

Buy Hire Service

Buy Hire Service

Buy Hire Service

Analog is a world leader in the research, development and manufacturing of gas sensing solutions, such as gas detectors and gas monitors. Their systems are used in diverse markets and applications such as space exploration, food and beverage, deep sea diving, green energy, and for keeping submariners across the globe safe.



ASO

A single point wall mounted safety monitor for carbon dioxide (CO₂) enrichment. Typically found in restaurants, pubs, bars, fast food establishments, breweries, hospitality venues, laboratories and medical centers.

[Buy](#) [Service](#)



ACG+

A multi-gas analyzer to measure: oxygen (O₂), carbon dioxide (CO₂), carbon monoxide (CO), Volatile Organic Compounds (VOC's) and Dew Point in compressed air. The unit can be wall mounted or used as a portable system.

[Buy](#) [Service](#)



Ax60+

If you need a simple, ready to install and cost-effective gas safety monitor – we've got you covered.

The Ax60+ is easy to install and already programmed for your local regulations.

[Buy](#) [Service](#)



COSAMS

Keeping submariners safe from CO poisoning.

This product uses a red sensing technique ensuring the system is not sensitive to hydrogen or water vapour. It has a built-in auto-zero function ensures sensor stability.

[Buy](#) [Service](#)



CO Clear

The CO Clear is designed to be installed inline on heliox or breathing air compressor arrangements to warn the operator if there is a potential contamination of carbon monoxide before it reaches the user.

[Buy](#) [Service](#)



O2NE+

A single point wall mountable safety monitor for oxygen (O₂) depletion. This uses a partial pressure oxygen (O₂) sensor so it is not cross sensitive to helium (He) ingress.

[Buy](#) [Service](#)



SDA Range

The SDA carbon dioxide (CO₂) monitor provides reliable carbon dioxide (CO₂) monitoring to maintain a comfortable and safe saturation diving chamber.

[Buy](#) [Service](#)



Sub MkIIIF

A fixed hyperbaric or hypobaric atmosphere monitor, detecting carbon dioxide (CO₂), oxygen (O₂), pressure, temperature and humidity.

[Buy](#) [Service](#)

Blackline Safety gas detectors are designed to provide workers with a wealth of live data and real-time alerts of hazardous gas exposure. The detectors are connected to a cloud-based platform that allows supervisors to monitor the safety status of their workers in real-time – This information can then be used to quickly identify and respond to potential hazards.



G6 Single-Gas

The Blackline G6 single gas detector offers innovation in single-gas detection by providing a continuous stream of live data such as worker locations, allowing managers to respond quickly to prevent safety incidents. The G6 provides Fast Incident Response by Knowing exactly where your workers are the moment an alarm is triggered.

- Buy
- Hire
- Service



G7 Portable Multi-Gas

The G7 Portable multi-gas detector will continuously monitor for up to five gases while delivering real-time visibility of workers' safety, including their current alert status. With integrated mobile and optional satellite connectivity, the cloud-hosted device configuration and alert management tools give you full information and control at all times.

- Buy
- Hire
- Service



G7c Multi-gas Pump

The G7c gives you unprecedented control over each confined space entry and a leak check your team performs. Quickly adapt to the environment or evolving circumstances by flipping between diffusion and pump configuration modes at any time – and all with the standard features of G7 single-gas and multi-gas devices.

- Buy
- Hire
- Service



G7 Dock

Blackline Live makes it easy to manage changes to G7 Dock inlet configurations. Many organisations leverage the convenience of multi-gas mixtures while others employ single-gas cylinders for the improved cost of detector testing and calibration.

- Buy
- Hire
- Service



Blackline Safety's G7c leverages integrated 4G/3G-cellular connectivity to wirelessly link your team to real people while automating data analytics and compliance reporting. Should a gas leak, injury or health event occur, G7c confidently accounts for everyone's well-being and whereabouts in real-time, so no call for help ever goes unanswered.

The moment something happens, safety incident data is communicated to live monitoring personnel who can mobilise responders to an employee's exact location or trigger an evacuation in real-time. With a two-way speakerphone, monitoring personnel can communicate directly with the worker to provide comfort while also gathering critical insights and situational awareness for optimized emergency responses.

EXO G7 AREA MONITOR



- 100+ day battery life
- Configurable gas sensor cartridges monitor for up to five gases
- 360° diffusion gas detection
- Optional four-channel pump module
- Internal 4G wireless works in 100+ countries
- Optional Iridium global satellite module
- Internal GPS and beacon location technology

Blackline G7 EXO Area Monitor: Gas detection that seamlessly connects your site and teams.

When it comes to the world of connected gas detection and safety wearables, we've already raised the bar. Now we've set our sights on disrupting another market — area gas monitoring.

The world's first direct-to-cloud area monitor that delivers ultimate visibility into your entire facility and workforce. With integrated 4G and optional satellite connectivity, G7 EXO automatically links to the Blackline Safety Cloud where it can integrate and work alongside employee-worn G7 devices.

Streaming critical insights that create a more engaged, safer workplace across all levels and locations of your business, G7 EXO is intelligence and versatility wrapped into one game-changing solution.

Reliable Connectivity within minutes

Blackline Safety's G7 EXO deploys in minutes, delivering reliable connectivity and ultimate peace of mind for 100+ days, even in the harshest conditions. You can always rely on G7 EXO to perform when you need it most.

Until now, conventional area monitors have suffered short battery life, limited configurability and inadequate connectivity while also being challenging to integrate into a seamless network.

blacklinesafety



Established in 1914, MSA Safety Incorporated is the global leader in the development, manufacture and supply of safety products that protect people and facility infrastructures.

MSA's core products include self-contained breathing apparatus, fixed gas and flame detection systems, portable gas detection instruments, industrial head protection products, fire and rescue helmets, and fall protection devices.



SENTRY io® Controller

The SENTRY io Controller offers a robust, easy to use platform for nearly any application and skill level. Modern touchscreen HMI supports intuitive setup, operation, and troubleshooting workflows. Guided setup and auto-recognition of MSA and General Monitors® flame and gas detectors through HART saves valuable time during setup.

[Buy](#) [Service](#)



9010/9020 SIL

The 9010/9020 SIL controller comes with advanced design and innovative features for monitoring up to 20 channels. The 9010 controller operates with one independent sensor, while the 9020 operates with two independent sensors per control module. Each module comes with an independent AC/DC power supply for increased system reliability.

[Buy](#) [Service](#)



GasGard® XL Controller

Monitor up to eight remote gas sensors with the highly accurate wall-mounted GasGard XL Controller. The controller's large, multi-language LCD display provides real-time readings, offers full-system diagnosis and shows intuitive icons.

[Buy](#) [Service](#)



ULTIMA® X5000 Gas Monitor

The ULTIMA® X5000 Gas Monitor is the future of gas detection for oxygen, toxic and combustible gases. MSA XCell® gas sensors with TruCal® technology offer calibration cycles up to 24 months (local calibration respected).

[Buy](#) [Service](#)



Senscient ELDS™ Open Path Gas Detector

The Senscient ELDS laser-based open path gas detector is available for a wide range of toxic and flammable gases. The Senscient ELDS uses 'SimuGas' self-testing to eliminate employees entering hazardous areas for gas checks. Nuisance false alarms are virtually eliminated with its breakthrough Harmonic Fingerprint processing.

[Buy](#) [Service](#)



IR400 Point IR Gas Detector

The IR400 Infrared (IR) Point Detector is a hydrocarbon gas detector that continuously monitors combustible gases and vapors within the lower explosive limit (LEL) and provides alarm indication. It features an industry-leading response time of less than 3 seconds, even with a splash guard installed.

[Buy](#) [Service](#)



PrimaX® P Gas Transmitter

Designed to detect gases indoors or outdoors, our PrimaX P Gas Transmitter measures oxygen and toxic and combustible gases. The flameproof transmitter is housed in a powder-coated aluminum enclosure that will protect it in extremely dangerous conditions.

[Buy](#) [Service](#)



PrimaX® I Gas Transmitter

Indoors or outdoors, our PrimaX I Gas Transmitter provides dependable, accurate gas detection. The transmitter detects toxic gases and oxygen and is housed in an antistatic, reinforced nylon enclosure.

[Buy](#) [Service](#)



Observer® i Ultrasonic Gas Leak Detector

Instantly detect pressurised gas leaks with this high-precision, omni-direction acoustic detector utilizing Gasonic® ultrasonic technology. Works even when traditional methods of gas detection are unsuitable or dependent on ventilation.

[Buy](#) [Service](#)



General Monitors® S5000 Gas Monitor

It operates over a wide temperature range using a variety of gas sensing technologies. Breakthrough XCell® gas sensors with TruCal® technology extends calibration cycles up to 24 months and actively monitors sensor integrity for ultimate peace of mind.

[Buy](#) [Service](#)



IR5500 Open Path Infrared Gas Detector

The IR5500 is an open path infrared (IR) gas detector that continuously monitors for flammable gas leaks over large open areas. It monitors in both the LEL-m and ppm-m ranges to detect both small and large leaks. The IR5500 offers the benefits of early detection with its high sensitivity to gas concentrations at the ppm levels.

[Buy](#) [Service](#)



TL105 Test Lamp

The TL105 is a battery-operated, explosion-proof test lamp designed specifically to test all General Monitors Flame Detectors including (but not limited to) the FL5000, FL500, FL4000H, and any of the FL3100 Series detectors. The TL105 operates up to 35 feet from the flame detector.

[Buy](#) [Service](#)



FL4000H Multi-spectrum IR Flame Detector

The FL4000H is an advanced multi-spectrum infrared (MSIR) flame detector that provides superior false alarm immunity with the widest field of view. The FL4000H employs a multi-spectral optical IR sensing array with a sophisticated Neural Network Technology (NNT) system.

[Buy](#) [Service](#)



FL5000 MSIR Flame Detector

The MSA General Monitors® FL5000 is an advanced multi-spectrum infrared (MSIR) flame detector that provides superior false alarm discrimination over long distances. The FL5000 employs a multi-spectral optical IR sensing array with sophisticated Artificial Neural Networks (ANN).

[Buy](#) [Service](#)



FL500-H2 UV/IR Flame Detector for Hydrogen

The FL500-H2 is an Ultraviolet / Infrared flame detector designed specifically to detect hydrogen (H2) fires. The FL500-H2 optical flame detector monitors for radiation emitted by a hydrogen flame in both the ultraviolet (UV) and infrared (IR) spectral ranges.

[Buy](#) [Service](#)



FL500 UV/IR Flame Detector

The FL500 UV/IR Flame Detector monitors for radiation emitted by a flame in both the ultraviolet (UV) and infrared (IR) spectral ranges. This UV/IR combination provides a fast response time and increased false alarm immunity against sources of radiation for reliable protection.

[Buy](#) [Service](#)

“Men and women may work in safety and that they, their families, and their communities may live in health throughout the world.”

Every customer scenario demands a different, customised approach, and Teledyne Gas and Flame Detection applies expertise in building the right plan for the right hazards every time.



MX 32 Analog and digital gas controller

We introduce the new MX 32, a controller that takes analog & digital inputs and covers all needs for a wide variety of applications.

The MX 32 is a compact, low-profile controller that continuously monitors gas detection and more generally any 4-20 mA, MODBUS RS485 signal from compatible detectors.

[Buy](#) [Service](#)



MX 43 Gas Detection Controller

Fully scalable, and designed to functional safety performance level 1 standards, the MX 43 is an analog and digital controller that continuously measures and controls gases in the atmosphere. The MX 43 gas detector manages both digital lines and analog channels, and covers all needs for a wide variety of gas monitoring applications.

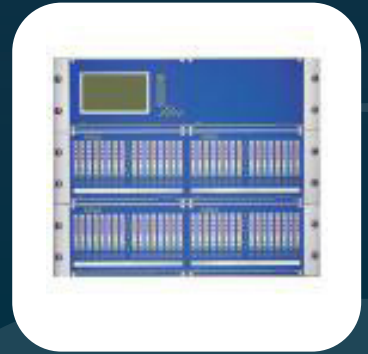
[Buy](#) [Service](#)



MX 52 Gas Detection Controller

The MX 52 control unit allows various detectors to be connected and monitored. Any gas detector from Teledyne Gas and Flame Detection or any other 4-20 mA device can be monitored and controlled.

[Buy](#) [Service](#)



MX 62 Gas Detection Controller

An attractive solution for gas and flame detection needs, the MX 62 is a modular and flexible controller that is easy to install and reduces operational costs.

The MX 62 system meets the requirements of ATEX 100 A and offers the high level of security required by SK2 and SIL3 systems.

[Buy](#) [Service](#)



MultiSafe-MX - Fire, Gas and Intruder

The MultiSafe-MX system is intended for the protection of high hazard, high risk plant and facilities.

The MultiSafe-MX is certified, by European laboratories, to comply with the applicable regulations.

[Buy](#) [Service](#)



Surveyor 4B One channel gas controller

Teledyne Gas and Flame Detection has designed the SURVEYOR 4B as a monitoring apparatus specifically designed to ensure the safety of boiler plants, battery charging rooms or small units where your operations are at risk due to the possibility of flammable gas leaks.

[Buy](#) [Service](#)



X40 - Gas Alarm & Control System

The Model X40 controller is completely field programmable using a small handheld magnet and offers advanced technology with intuitive, embedded intelligence. The control system displays real time readings and field device status on a backlit LCD screen.

[Buy](#) [Service](#)



MX 256 Control Unit

The MX 256 is a digital control unit intended for the detection and measurement of gases present in the atmosphere and more generally for the processing of any digital signal from digital sensors (OLCT 10N types), relay module, analog output module, logic input module.

[Buy](#) [Service](#)



7200 Plus, 7400 Plus Fixed Gas Controllers

The 7200 Plus and 7400 Plus Controllers are designed to provide simultaneous display and alarm functions for up to four monitored variables.

A graphic LCD displays monitored data as bar graphs and engineering units. Three adjustable alarm levels are provided per channel.

Buy Service



8800 Controller

The 8800 controller provides simultaneous display and alarm functions for up to 16 input variables. 8 or 16 channel display modes, and I/O modules arranged in groups of 8 channels, allow economical configuration of systems. This easy-to-configure, user friendly controller is ideal for centralising display and alarm functions.

Buy Service



AV1-C1D2E audio-visual alarm

The AV1-C1D2E audio-visual alarm station is designed for installation and use in heavy industrial environments. The alarm station consists of a beacon and alarm horn. The warning light comes in field interchangeable dome colours of amber, blue, clear, green, red, yellow and magenta.

Buy Service



Gas Detection Car Park System - CPS

The CPS car park air monitor accurately and reliably protects the public and employees from airborne toxic gases in parking facilities and tunnels. The system was designed to comply with the high air quality safety standards enforced in such European countries as Germany, the Netherlands and Belgium.

Buy Service



IP66 Series

The IP66 Series of Models A-IP66, V-IP66 and AV1-IP66 consist of an audible sounder (A), a visual beacon (V) or a combination of the two (AV1).

All of these options come in impact resistant plastic housings that are rated to IP66 for dust and water ingress protection.

Buy Service



MX 62 TP Gas Controller

Bringing together the latest data logger and alarm unit for gas and flame detection systems, the MX 62 TP features an innovative HMI interface specifically designed to facilitate user-controller interactions.

Buy Service



MX 16 - One channel Gas Controller

Specially designed for applications in laboratory, storage, small boiler room, and breweries or battery charging rooms, the MX 16 measuring unit prevents the risks of explosion linked to the presence of toxic, anoxic and explosive gases in the ambient air.

Buy Service



CTX 300

When hazardous levels of toxic gases or oxygen threaten the safety of an unclassified area, the CTX 300 detector can satisfy the most demanding safety requirements.

The CTX 300 detector is designed to detect oxygen, toxic and refrigerant gases.

Buy Service

“We are committed to protecting the environment, providing a workplace that ensures the health and safety of our employees and making a positive impact in the communities in which we operate.”



700 Series

The sensor electronics are completely protected and immune to water ingress and corrosion. The sensor elements are all plug-in components and can easily be replaced in the field. Operator interface is non-intrusive via a small handheld magnet.

[Buy](#) [Service](#)



Meridian

Whether you need an infrared or catalytic bead sensor to detect combustible gases or an electrochemical sensor for a toxic environment, the Meridian universal gas detector utilises a single detector head to easily accept all sensor types.

[Buy](#) [Service](#)



iTrans2 Universal Transmitter

The iTrans2 infrared gas detector employs an intelligent electronics platform to provide one or two points of detection from a single head for maximum flexibility, superior performance and lower installation costs.

[Buy](#) [Service](#)



MicroSafe 500 & 600 Series

MicroSafe 500 and 600 Series gas detectors feature a non-intrusive operator interface. Calibration and programming instructions appear in simple intuitive and sequential script on a 16-character backlit display. The transmitter design incorporates extensive fault diagnostics with each condition conveniently identified on the transmitter display.

[Buy](#) [Service](#)



GD10 Series

The GD10 Series has been designed with features that provide an effective response to the detection of gas hazards in a wide range of industrial environments from boiler plant rooms to offshore petrochemical installations.

[Buy](#) [Service](#)



OLC (T) Toxic and flammable gas sensor

Designed for the detection of explosive gases, toxic gases or oxygen, this gas detector comes with a Wheatstone bridge output (OLC 100) or 4-20mA output (OLCT 100). Whatever your application Teledyne Gas and Flame Detection offers a solution: MEMS, catalytic, electrochemical, semiconductor, or poison control version.

[Buy](#) [Service](#)



Model 100 Toxic Gas Sensor

Model DM-100 Series sensors feature intelligent electronics, non-intrusive operator interface and comprehensive fault diagnostics. The sensor is packaged in an electro-polished 316 stainless steel housing fitted with a 3/4 inch NPT thread.

[Buy](#) [Service](#)

“As a leading gas detection company, we believe we must set an example for the industry and our customers by holding ourselves to the strictest standards for environmental protection everywhere we operate.”



SERVICE & CALIBRATION

Making sure your equipment is properly maintained and ready to use!

We understand that regular gear inspections can impact on its longevity out in the field. To ensure its reliability, our trained inhouse engineers are equipt to repair and calibrate a wide variety of product ranges, including gas detectors, fall arrest equipment and respiratory protection.

Our Promise to you

Prompt Turnaround

To ensure your products are available when you need it most, we provide a quick 3 - 5 working day lead time, anywhere in the UK.

Regular Training

With the introduction of new product ranges, our engineer are frequently certified by our trusted manufacturers, making sure high standards are met.

Custom Solutions

We understand that each environment is unique. Our experts work with you to tailor a gas detection system that meet your specific needs.

Advanced Technology

Utilising the latest advancements in gas detection technology, we provide state-of-the-art solutions that deliver accurate and reliable results.

Environmental Compliance

We ensure that all our products and services meet the highest environmental standards and regulations, helping you stay compliant and eco-friendly.

Nationwide Coverage

Our extensive network allows us to provide prompt service and support to clients across the UK, ensuring that help is always nearby.



SELF CONTAINED BREATHING APPARATUS

Selecting the appropriate SCBA kit involves a thorough assessment of the specific hazards encountered and user requirements. Factors to consider include air cylinder capacity, breathing apparatus type (closed-circuit vs. open-circuit), and compatibility with additional safety equipment.

Components

- Compressed air cylinders: High-pressure vessels that store breathable air, typically last 30-45 minutes.
- Backpack frame: This assembly distributes the weight of the cylinders and other components.
- Pressure regulator: Reduces cylinder pressure to a usable level for breathing.
- Demand valve: Delivers air only when the wearer inhales, conserving air supply.
- Facemask: Provides a sealed interface for breathing filtered air and protects the wearer's face.
- Alarms: Audible and visual alerts warn of low air pressure and other critical situations.

Applications

- Firefighting: Firefighters rely on SCBA to navigate smoke-filled buildings and rescue victims.
- Industrial applications: Workers in chemical plants, refineries, and other hazardous environments use SCBA for maintenance and emergency response.
- Confined space entry: Personnel entering confined spaces with potential oxygen deficiency or contaminant risks require SCBA protection.
- Search and rescue: Rescue teams utilize SCBA in collapsed structures, collapsed trenches, and other situations with compromised atmospheres.

Choosing the Right SCBA Kit

SCBA kits play a crucial role in safeguarding personnel working in hazardous environments. By understanding their components, applications, and selection criteria, businesses can ensure they equip their workforce with the necessary respiratory protection for optimal safety and compliance.

SCBA kits are vital equipment for personnel operating in environments with atmospheres immediately dangerous to life and health (IDLH). These portable life-support systems provide wearers with breathable air, protecting them from harmful contaminants such as smoke, toxic gases, and airborne particulates.



Dräger PAS Lite

The Dräger Pas Lite Compressed Air Breathing Apparatus is ideal for use in hazardous environments. This device has a low-weight design that is easily carried and comfortable for the user. Its unique form is made with a high-strength carbon composite space frame that has excellent weight distribution, reducing strain on the back.

[Buy](#) [Hire](#) [Service](#)



Dräger PSS 3000

This SCBA unit exhibits outstanding thermal, impact and chemical resistance. Its ergonomic build provides a comfortable fit that is easy to don and doff.

Both the medium-pressure air supply and gauge hoses are integrated into the carrying-frame reducing the risk of snagging and entanglement.

[Buy](#) [Hire](#) [Service](#)



Dräger PSS 4000

Thanks to its advanced material and innovative design, the Dräger PSS 4000 is one of the lightest self-contained breathing apparatuses (SCBA) available. With unparalleled wearer comfort and exceptional pneumatic performance, the PSS 4000 SCBA provides the user with simplicity and ease of use in a wide range of demanding environments.

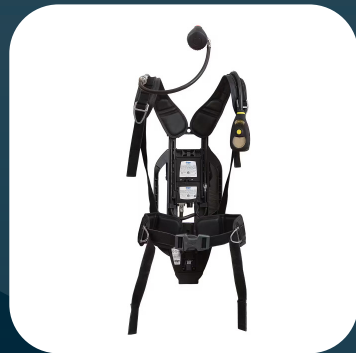
[Buy](#) [Hire](#) [Service](#)



Dräger PSS AirBoss

Offers best in class ergonomics and is one of the lightest weight breathing apparatus for firefighting. Lessons learned from firefighters around the world as well as latest innovations in technology have led Dräger to design an even safer and cleaner SCBA system.

[Buy](#) [Hire](#) [Service](#)



Dräger PSS 7000

Suited for firefighting, the PSS 7000 can ensure the user has reliable protection when working in toxic environments. Designed for maximum comfort, this device is made with a rigid harness connection to an adjustable backplate and pivoting waist belt.

[Buy](#) [Hire](#) [Service](#)



Dräger FPS 7000

Ideal for use with the Dräger PSS BG4 CCBA this breathing mask is made from strong EPDM and features a strong APEC polycarbonate visor that offers 180 degree visibility. With an anti-scratch lens and anti-misting interior, this mask ensures the user has maximum visibility at all times.

[Buy](#) [Hire](#) [Service](#)



Dräger PAS Colt

With its comfortable fit and highly resistant build, this Dräger PAS Colt SCBA set is suitable for a variety of applications.

The Colt is a hip-mounted SCBA system that is suitable for carrying an appropriate gas cylinder in short-duration entry operations.

[Buy](#) [Hire](#) [Service](#)



Dräger PAS Micro

The advanced Dräger PAS Micro Escape Set is a reliable solution to short-duration and emergency escape units.

Its design is adjusted to the natural contours of the back to ensure comfort for the user during extended wear. It also features an integrated hose and pressure reducer.

[Buy](#) [Hire](#) [Service](#)



SELF RESCUE ESCAPE KITS

Dräger Saver CF15

The CF15 is an emergency escape breathing kit, designed for swift evacuation from hazardous environments. The CF15 provides 15 minutes of clean breathable air, allowing you to escape calmly and safely.

This easy-to-use device is ideal for use with minimal training. Encased in a bright orange, fire-resistant soft bag, the CF15 is lightweight and portable. Donning it is straightforward; simply open the bag, and the hood automatically activates, delivering a constant air supply.

The hood itself is designed for universal wear, accommodating glasses and facial hair. A pressure gauge, visible through a window on the bag, lets you monitor the air supply. An alarm whistle sounds before the air runs out, giving you ample warning to reach an exit.



Dräger Saver PP15

This self-contained positive pressure escape set provides 15 minutes of clean, breathable air, allowing you to navigate smoke, toxic fumes, or oxygen-deficient environments. Unlike the CF15 hoods, the PP15 utilizes a full-face mask, the Panorama Nova, for a secure and comfortable fit. This design ensures no contaminated air leaks in, even during strenuous activity. The mask features a wide field of view and a self-demisting visor for optimal clarity when you need it most.

Activation is automatic. Simply don the mask and the compressed air cylinder kicks in, delivering a consistent airflow throughout the escape. The unit boasts low breathing resistance, making exertion easier. A pressure gauge allows you to monitor air supply, while an audible alarm sounds before depletion.





Dräger PAS Airline 1

The air supply is fed to the user via the use of a hose reel from the trolley-mounted cylinders. The AirPack is easily relocated, allowing the user to move it around at will.

This device can hold up to four compressed air cylinders at one time, and comes with a 50 metre length of hose as standard.

Buy Hire Service

Dräger PAS Airline 2

Provides uninterrupted air supply via mounted air cylinders, this all in one solution is extremely easy to work with.

Coated in a anti-static powder steel material, this device accommodated 2 air cylinders of up to 50 litres, whereas the the rear wheels include a user friendly foot brake.

Buy Hire Service

Dräger X-Plore 2100

The Dräger X-plore® 2100 is the reusable alternative to disposable dust masks.

The X-plore® 2100 is the ideal solution for people working frequently in dusty environments. Its replaceable filters provide protection against solid and liquid particles.

Buy

Dräger X-Plore 3300

A perfect combination: modern design and light weight offer you extra protection and comfort.

Choose from the low-maintenance, cost-effective Dräger X-plore® 3300 half mask or Dräger X-plore® 3500 version for long lasting protection under tough conditions.

Buy



Dräger X-Plore 3500

A perfect combination: modern design and light weight offer you extra protection and comfort.

Choose from the low-maintenance, cost-effective Dräger X-plore® 3300 half mask or Dräger X-plore® 3500 version for long lasting protection under tough conditions.

Buy

Dräger X-Plore 4700

A robust half mask which offers excellent comfort and outstanding leak tightness for demanding applications.

Thanks to the wide range of filters available for protection against gases, vapours and particles, it is ideally suited for use in a variety of industries.

Buy

Dräger X-Plore 5500

Whether in the chemical, metal, or automotive industries, ship building, supplies, or disposal:

The Dräger X-plore® 5500 full face mask is the right solution for environments where not only increased respiratory protection is required, but also a clear vision is mandatory.

Buy Service

Dräger X-Plore 6300

The Dräger X-plore® 6300 is the efficient yet low-cost full face mask intended for price-conscious users not wishing to compromise on comfort or quality.

This full face mask is the successor to the Panorama Nova®

Buy Service



“Our dedicated technical sales specialists are fully trained and certified to provide individual customers all levels of safety required.”



Dräger X-Plore 6350

The full face mask Dräger X-plore® 6350 is the successor to the Panorama Nova® RA masks, meeting the highest demands for quality, reliability and secure fit.

The mask body made from EPDM is highly resistant and skin-friendly, offering high wearing comfort.

Buy Service



Dräger X-Plore 6570

The Dräger X-plore® 6570 is the high comfort full face mask used by professionals in a wide variety of applications.

It is the successor to the Panorama Nova® RA masks, a range which has proven itself over decades of use worldwide.

Buy Service

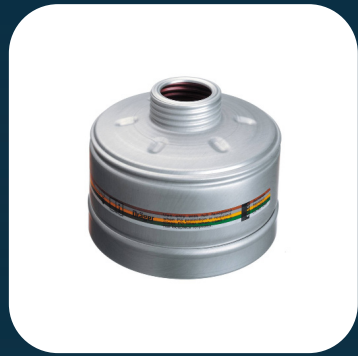


Dräger Panorama Nova

This breathing mask ensures that the user has a full 180° view at all times with its large impact-resistant visor.

It also features a five-point harness that provides a comfortable fit for the user, as well as quick donning and doffing.

Buy Hire Service



NBC & Civil Defence

These units typically include fully encapsulating suits, advanced respiratory protection systems with specialized filters, and detection instruments. They are specifically engineered to enable safe operation in contaminated environments, mitigating risks during emergency response, military operations, and industrial scenarios.

Buy



Dräger X-Plore RD40

The X-plore Rd40 filter series offers various filter types for major applications and protects against many hazardous substances – from phosphine to tear gas to particulates. The gas filters and combination filters have a shelf-life of 6 years and the particle filters a shelf life of 12 years from date of manufacture.

Buy



Dräger X-Plore Bayonet

The innovative Dräger X-plore® Bayonet filter series is designed for a wide range of applications.

Both the special composition and the pleating of the filter paper create more surface area. This significantly reduces breathing resistance.

Buy



Dräger CF10 & CF15 Escape Sets

The Dräger Saver CF constant flow Emergency Escape Breathing Apparatus allows safe, effective and uncomplicated escape from hazardous environments. Simple to put on and featuring automatic operation, this hood-based, constant flow breathing device can be used with minimal training.

Buy Hire Service



Dräger PP10 & PP15 Escape Sets

Simple to put on and featuring automatic operation, this positive-pressure breathing device features an integrated full-face mask and can be used in conjunction with other safety equipment such as ear protectors or helmets.

Buy Hire Service

“A reliable company that holds most safety product ranges in stock. It backs this stock with a sound technical knowledge of safety products, in turn this provides a customer with an excellent service.”

- Excavation Safety Solutions

“We have used Rockall Safety for many years and find their service hassle free and efficient. Utilising a wide range of equipment, they have been able to assist us with across the board.”

- Cardiff Harbour Authority

“Great customer service, ensuring we were able to get the right protection and chemical suits for what can be a dangerous work environment. They continue to meet our expectations.”

- Carl Wilson



Dräger Oxy SR 30 / 60

The Dräger Oxygen Self Rescuers are easy and fast to handle, even under extreme conditions.

The devices are service-free for up to 10 years while being worn. The unique safety eye provides you the ability to check the device without additional tools.

[Buy](#) [Hire](#) [Service](#)



Dräger Parat 3200

The Dräger PARAT 3200 is a mouthpiece / nose clip escape device equipped with a multi-gas ABEK15 filter. Packed in a robust and ergonomic case, the unit is compact and easy to carry. Approved to (DIN 58647-7), it provides users a minimum of 15 minutes escape time.

[Buy](#)



Dräger Parat 4700

This industrial escape hood was developed with users, placing the focus on the fastest possible escape. Optimized operation and wearing comfort, a robust housing and a tested ABEK P3 filter ensure protection from toxic industrial gases, vapours and particles for at least 15 minutes.

[Buy](#)



Dräger Parat 7500

The high-performance filter protects against a wide range of fire and toxic industrial gases, vapours and particles. The ABEK CO P3 Filter is approved for EN standard 403:2004 for fire escape hoods, the DIN standard 58647-7 for filtering escape devices and is tested in accordance with the EN standard 14387:2004 for gas filter(s) and combined filter(s).

[Buy](#)

HAZMAT SUITS



Dräger CPS 5800

The gas-tight Dräger CPS 5800 (type 1b) protects against a multitude of substances meeting the highest requirements of fire departments and shipping.

It fulfills EN 943-1+2:2002, and the SOLAS requirements, and is approved for use aboard ships.

[Buy](#)



Dräger CPS 5900

The Dräger CPS 5900 is the ideal limited-use, gas-tight chemical protective suit for hazmat incidents.

Where complete protection against hazardous gases, liquids and particles is of the utmost priority, this lightweight garment is the suit of choice.

[Buy](#)



Dräger CPS 7800

The reusable gas-tight Dräger CPS 7800 provides excellent protection against gaseous, liquid, aerosol and solid hazardous substances even in explosive areas. Due to its innovative material and the new suit design it offers increased flexibility and comfort when entering confined spaces and working with cryogenic substances.

[Buy](#)



Dräger CPS 7900

Tailor-made for use under extreme conditions: The gas-tight Dräger CPS 7900 provides excellent protection against industrial chemicals, biological agents, and other toxic substances. Its innovative material qualifies the CPS 7900 equally well for work in explosive areas and for handling cryogenic substances.

[Buy](#)

DRUG & ALCOHOL TESTING



Dräger Alcotest® 7000

The Alcotest 7000 sets new standards in alcohol test devices.

Its benefits include a wider temperature- and measuring range, low maintenance requirements and various networking options. Additionally, the device can perform alcohol tests via a mouthpiece or funnel.

Buy



Dräger Alcotest® 6820

The fast and compact Dräger Alcotest® 6820 alcohol detection device meets the stringent requirements of professional breath-alcohol analysis. With its DrägerSensor, this robust alcohol tester guarantees rapid response times and precise test results in all weather conditions and can be adapted to international guidelines.

Buy



Dräger Interlock® 7000

The Interlock® 7000 is an alcohol ignition interlock device (AIID) which prevents a person under the influence of alcohol from starting a vehicle.

It has a quick start-up time and can be equipped with a camera, a GPS and/or a mobile data transfer module, according to the specific customer requirements.

Buy



Dräger Alcotest® 6000

The Dräger Alcotest® 6000 allows the professional user to perform a breath alcohol test with speed and precision.

The measuring technology of this small and user-friendly portable measuring device has already been proven worldwide and has been sold over 1,000,000 times.

Buy



Dräger Alcotest® 5000

The Dräger Alcotest® 5000 is a professional breath-alcohol tester which detects the presence of alcohol. The high-speed breathalyser lets you perform numerous tests in no time. Its special funnel reduces the back-flow of expired air to a minimum, preventing the risk of infection to subsequent test subjects.

Buy



Dräger Alcotest® 4000

The breathalyser Dräger Alcotest® 4000 offers responsible drivers a reliable way to test their breath alcohol and gives them the assurance of being legal to drive.

This is ensured by precise measurement technology identical to that used by the police: over 30 million breath alcohol tests a year.

Buy



Dräger DrugCheck 3000

Use the Dräger DrugCheck 3000 to find out within minutes if a person recently consumed certain drugs. The compact and quick saliva (oral fluid) based drug test yields reliable results affordably and easily.

The non-invasive drug test kit does not require electricity and can therefore be used anywhere.

Buy



Dräger DrugTest 5000

No pipetting, no drips, no timing: With the Dräger DrugTest 5000, a drug test is carried out simply and quickly.

The collected saliva sample can be analyzed immediately - for an accurate results on the spot.

Buy

ATEX PHONES & TABLETS



Apple iPhone SE
For use in Zone 2

These explosion-proof iPhones are originally manufactured by Apple and then converted and certified according to the ATEX directives by Atexxo Manufacturing, making the mobile phones suitable for safe use in gas and vapour (Zone 2) hazardous locations.

Buy



ATEX iPhone 12
For use in Zone 2

The ATEX iPhone 12 comes with a durable black case finish and is available for the iPhone 12 with 64GB, 128GB or 256GB. Besides being safe to use as an EX smartphone, the versions are excellent for intrinsically safe video or photo camera use with Bluetooth and/or Wi-Fi connection.

Buy



iPhone 13 Pro
For use in Zone 2

Compliance with ATEX / EX regulations is achieved by upgrading the casing of the iPhone 13 which combined with the intrinsically safe electrical circuit.

The ATEX iPhone 13 (Pro Max) comes with a tough black case finish and is available for iPhone 13 with 128Gb, 256Gb, 512Gb, and 1Tb.

Buy



Exloc IS330.1
Zone 1 Android Phone

The Exloc IS330.1 Zone 1 android phone is Rugged, safe, and built for any challenge!

Highlights: Android™ 10, Bluetooth® 5, huge internal memory of 64 GB, multifunctional ISM interface, amplified loudspeaker, SOS key, PTT-key, MCPTT ready.

Buy



IS530.1 ATEX
Zone 1 / 21 Certified

Always a step ahead! The smart and innovative Zone 1/CI I Div1 smartphone with the most advanced technology: The first Bluetooth® 5.0 industrial smartphone with a multifunctional ISM interface, a huge internal memory of 64 GB and the highest camera resolution of its class.

Buy



IS530.2 ATEX
Zone 2 / 22 Certified

The high-performance industrial smartphone can be used in a multifunctional way thanks to the ISM interface. Additional modules such as an RSM, PTT headsets or the professional IS-TH1 barcode scanner make the IS530.1 a high-performance multifunctional device. Enterprise Recommended, zero-touch capable and MDM compatible.

Buy



IS540.1 ATEX
Zone 1 / 21 Certified

The World's first 5G ATEX Zone 1 smartphone is here thanks to i.safe MOBILE! The 6-inch full HD display on this smartphone offers the highest quality images with a 48MP main camera and wide range frequency bands for industrial applications. The 16-pin ISM interface enables a secure connection to a barcode scanner.

Buy



IS655.2 ATEX
Zone 2 / 22 Certified

This slim smartphone combines elegant and extremely robust design and is equipped with the latest technology, a fast processor and PTT button for uncomplicated team communication. The lightweight smartphone is Android Enterprise Recommended, zero-touch capable and MDM compatible.

Buy



Ex-Handy 10 Ecom Zone 1 Certified

The Ex-Handy 10 with Android operating system, is the ideal companion for innovative Industry 4.0 applications in hazardous areas.

With IP68 and Gorilla® Glass you can operate the Ex-Handy 10 in the roughest of environments.

Buy



Smart-Ex Ecom 201 Zone 2 Certified

This intrinsically smartphone offers an extensive range of portable features that are specifically designed to provided added convenience during your work day. Both unlocked and sim free, this provides you with a reliable communications solution that gives you access to any network worldwide.

Buy



Smart-Ex Ecom Zone 1 Certified

This intrinsically smartphone offers an extensive range of portable features that are specifically designed to provided added convenience during your work day. Both unlocked and sim free, this provides you with a reliable communications solution that gives you access to any network worldwide.

Buy



Ex-Handy 10 CLASSIC Zone 1 / 2 Certified

A preconfigured Ex-Handy 10 DZ1 / Ex-Handy 10 DZ2 which focuses on the main purpose: being a phone.

Besides limiting the device to phone relevant functions and restricting Android features to enhance performance of core functions, it's still packed with features which allow for "phone only" operation.

Buy

Featuring ATEX certification, these intrinsically safe portable devices offer a convenient tool for you to use on a day-to-day basis. User-friendly and incorporating the Android interface, this technology will make a welcome addition to your available resources.

TOUGH & ATEX LIGHTING



**MTB-10000
SITE LIGHT**

The MTB-10000 is a powerful 10000 lumen site light that supports batteries from Milwaukee, De Walt, Metabo and Makita. It has a 360-degree light output and can be dimmed multiple times to preserve battery life, as well as having multiple colour temperatures (2700K, 3500K, 4500K, 5500K, 6500K).

Buy



**MTB-5300 MULTI TOOL
BATTERY LIGHT**

The MTB-5300 is a powerful 5300 Lumen LED site light that supports batteries from Milwaukee, De Walt, Metabo and Makita, as well as mains power.

Built ultra tough and featuring incredible features like built in powerbank and charge LED indicators.

Buy



**RA-700R
INSPECTION LIGHT**

With a useful 130° rotating head to angle light direction; the RA-700R is a feature packed right angled work light. High CRI96+ 700 lumen COB LED main beam as well as a red light LED with static & flash modes. In built 4500mAh Li-ion rechargeable battery charged via magnetic charging station, or Type-C USB (both included).

Buy



**PL-3 POCKET
INSPECTION LIGHT**

A preconfigured Ex-Handy 10 DZ1 / Ex-Handy 10 DZ2 which focuses on the main purpose: being a phone.

Besides limiting the device to phone relevant functions and restricting Android features to enhance performance of core functions, it's still packed with features which allow for "phone only" operation.

Buy



**SLR-500
WORK LIGHT**

The SLR-500 is a compact USB rechargeable work light with a bright 500 lumen output. Its folding 180° stand contains a useful carabiner hook and strong integral magnets. In addition to its flood beam it also has a 300 lumen top torch. An IPX5 rating also ensures high water resistance.

Buy



**IL-SIG1 SIGNAL
INSPECTION LIGHT**

A powerful LED signal inspection light with a 1100 lumen output. It has solid/flashing: red, amber, green and white lights. It is fully weatherproof, rated to IP54 and is constructed of polycarbonate and die-cast aluminium. A magnetic hanging hook and multi positional kick stand make it super portable and DC-USB rechargeable.

Buy



**CRI-H200R LED
HEAD TORCH**

A powerful 200 lumen output with a high CRI of 96+, as well as 3 different temperatures of 2500k / 4500k / 6500k. Motion sensor activated, the head torch can be controlled with a simple swipe to turn on and off. IK07 shock resistance provides enhanced protection, whilst a high IP65 rating safeguards against dust & water.

Buy



**HT-680R HIGH CRI
HEAD TORCH**

This slim smartphone combines elegant and extremely robust design and is equipped with the latest technology, a fast processor and PTT button for uncomplicated team communication. The lightweight smartphone is Android Enterprise Recommended, zero-touch capable and MDM compatible.

Buy

