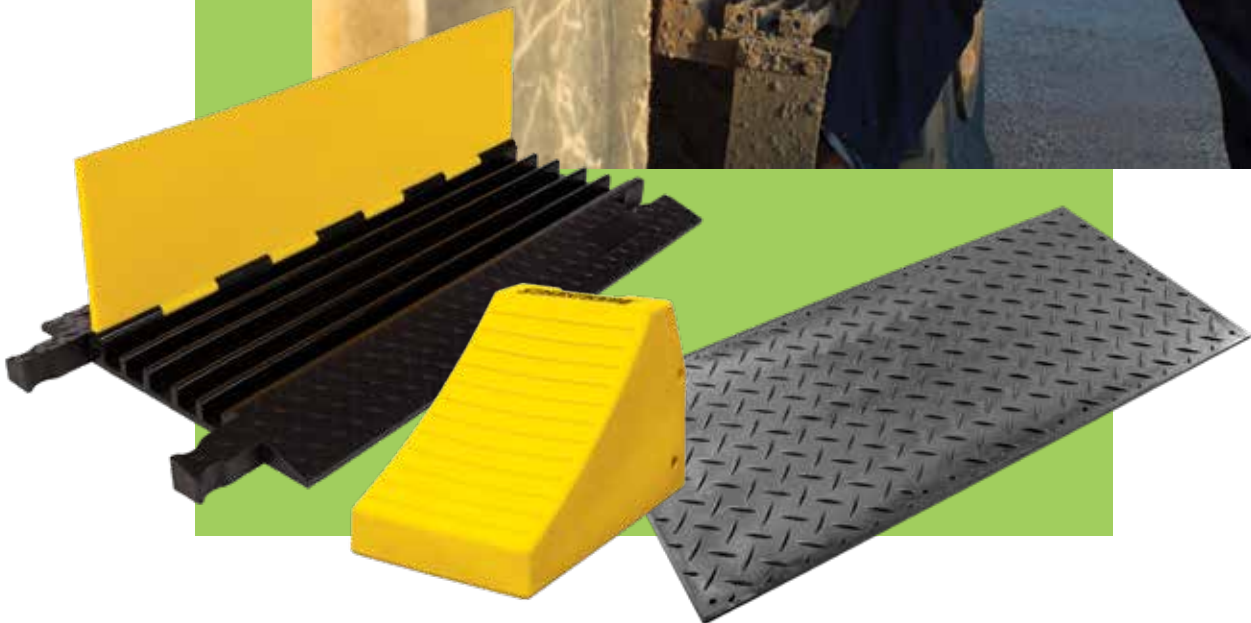


Cable Management, Vehicle Safety and Ground Protection

Essential

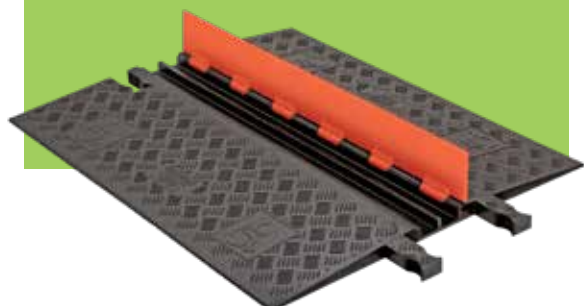




LIMITED WARRANTY: Checkers guarantees the products it manufactures or sells against defects in workmanship and material for a period of one (1) year from the date of shipment or date of invoice, whichever is later. The product must be used, maintained and installed according to the instructions and procedures provided, or this warranty is void. Any alteration or modification of the product will also void this warranty. Checkers' **OBLIGATION UNDER THIS WARRANTY IS LIMITED TO THE REPAIR OR REPLACEMENT OF DEFECTIVE PRODUCTS.** No other warranty or remedy shall be provided. This warranty specifically does not guarantee or cover payment or reimbursement of any damages or consequential damages other than repair or replacement of the product. Any claim under this warranty must be made in writing within twelve (12) months of the date of shipment or the date of invoice, whichever is later. Owner must prepay shipping costs of all products returned to Checkers under this warranty. If it is determined that the product is defective in material and /or workmanship the repair or replacement will occur, at Checkers' option, at no charge and return freight prepaid by Checkers. All other return of product to the owner shall be at the owner's expense.

CHECKERS AND ITS AUTHORIZED AGENTS, EMPLOYEES AND REPRESENTATIVES SPECIFICALLY AND EXPRESSLY DISCLAIM ANY AND ALL OTHER WARRANTIES, INCLUDING THE WARRANTY OF FITNESS FOR A PARTICULAR PURPOSE AND/OR ANY WARRANTY OF MERCHANTABILITY, THAT MIGHT OTHERWISE BE APPLICABLE UNDER ANY STATE OR FEDERAL LAW. LIMITED LIABILITY OF CHECKERS JUSTRITE SAFETY GROUP: Checkers and its authorized agents, distributors and representatives do not guarantee the performance of any Checkers product in the customer's use from anything other than defects in workmanship and material as provided for herein. Proper use by the customer is necessary for the effectiveness of the product, as well as the safety of those using same. The user is solely responsible to determine the suitability of any Checkers product for any intended use. The user assumes all risk and liability for use of any Checkers product. User specifically acknowledges receipt of proper instructions regarding the use of the product in the original packaging and disclaims any consequential damages to person or property, damages for loss of use, lost time, loss of profit, lost income, loss of the Checkers' product itself and/or other incidental or consequential damages other than as warranted by this limited warranty. User accepts the responsibility of removing from service any product that becomes worn out, unusable, unfit for intended use or defective in any way such as to make the product a potential safety hazard. Checkers is unable to undertake such obligations or responsibilities on behalf of the user as the user is in sole possession and control of the product.

Contents



| | |
|---|-----------|
| Introduction | 4 |
| A Growing Justrite Family | 5 |
| Start with the Essential SM | 5 |
| Cable Management Systems | 7 |
| Advantages of Using Checkers Cable Protection Systems | 8 |
| Choosing the Right Model | 9 |
| Cable Protector Reference Guide | 10 |
| Linebacker® Heavy-Duty | 11 |
| 3-Channel | 11 |
| 5-Channel | 11 |
| Yellow Jacket® Heavy-Duty | 12 |
| 5-Channel | 13 |
| 3-Channel | 13 |
| AMS® Accessibility Ramps and Rails for 5-Channel Heavy-Duty Yellow Jacket® | 14 |
| Guard Dog® General Purpose | 16 |
| 3-Channel | 17 |
| 5-Channel | 17 |
| 5-Channel General Purpose ADA/DDA Guard Dog® | 18 |
| Guard Dog® Low Profile | 20 |
| 5-Channel | 21 |
| 3-Channel | 21 |
| 2-Channel | 21 |
| 1-Channel | 21 |
| Grip Guard® Lightweight | 22 |
| 5-Channel | 23 |
| 3-Channel | 23 |
| Lightweight Drop-Over Fastlane® | 24 |
| 1-Channel FL1x1.5 | 25 |
| 1-Channel FL1x4 | 25 |
| Hose Bridge Systems | 26 |
| 1-Tunnel Large Hose Bridge Diamondback® Systems | 27 |
| Wheel Chocks | 28 |
| Advantages of Using Checkers Wheel Chocks | 29 |
| Choosing the Right Model | 31 |
| Heavy-Duty MC Series | 33 |
| MC3011 | 33 |
| MC3012 | 33 |
| MC3010 | 33 |
| MC3009 | 33 |
| Mounting Bracket | 33 |
| General Purpose UC Series | 34 |
| UC1210 | 35 |
| UC1500 | 35 |
| UC1700 | 35 |
| UCTS003 | 35 |
| Parking & Traffic Safety Products | 38 |
| Recycled Rubber Speed Bumps | 40 |
| Safety Rider® V | 41 |
| Easy Rider® | 41 |
| Mounting Hardware | 41 |
| Parking Stops | 42 |
| Park-It® | 43 |
| Mini Park-It® | 43 |
| Ground Protection & Stabilization | 44 |
| Medium duty ground protection mats | 46 |
| Heavy duty ground protection mats | 54 |
| Outrigger pads | 60 |
| Cellular paving systems | 62 |

Checkers™ is a portfolio company of Justrite Safety Group.

For over a century, Justrite Safety Group has helped protect where the world works. Our mission is to identify workplace vulnerabilities and guide customers in creating an ecosystem of safety—so your team can work with confidence.

Confidence





Start with the EssentialSM



A Growing Justrite Family

In recent years we have grown, expanding Justrite Safety Group through the acquisition of other strong, valuable companies. Because of these exciting changes, we want to share our story with you—one of an unrivalled safety portfolio, expertise in environmental protection, a global network of brands, and a steadfast dedication to our customers' safety.

Start with the EssentialSM

The essence of our company is captured in a new tagline: Start with the EssentialSM. At Justrite, everything starts with safety. Protecting people, property and the planet is our first and greatest responsibility. We provide the essential safety products you need to protect your workers and workplace.

Our company logo has recently evolved. The new logo honours our heritage in fire safety, while reflecting our expertise in containment and environmental protection.



Justrite Safety Group offers industrial safety solutions and expert advice from our portfolio companies around the world.

We cover every facet of the industrial safety landscape—from the storage, containment and clean-up of hazardous materials to motion safety and emergency showers.

Whatever your needs, we can help you build the foundation of a safe, productive workplace.



Essential Industrial Safety Products



In 1987 Checkers™ began with a simple vision: design and engineer the highest quality industrial safety products to provide effective safety solutions. That vision still drives Checkers today. With our product offerings of Cable/Hose Protection Systems, Wheel Chocks, Warning Whips, and more, Checkers creates unique solutions for our customers. Having the opportunity to serve a diverse number of customers and markets for over 32 years has provided us the knowledge and insight to ensure every one of our customers' needs is satisfied. Through our commitment to innovation and excellence Checkers is poised to continue to serve as your leading global provider of industrial safety products.

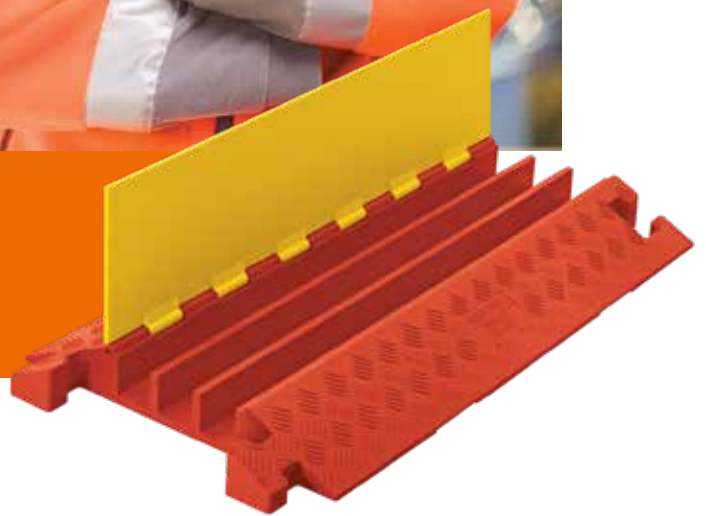
Checkers manufacturing facilities are located in Broomfield, Colorado, U.S.A. Each of our products is proudly produced in the United States. We take pride in providing the highest quality product at the best possible price. With this goal in mind, in early 2018, Checkers joined Justrite Safety Group.

This expands the non-PPE safety products offering exponentially to our customers. For more information visit www.justrite.com. Our products are sold worldwide into many diverse markets.

- Mining
- Oil and Gas
- Military
- Entertainment
- Power Generation
- Construction
- Utilities
- Manufacturing
- Material Handling
- Industrial
- Aviation
- Government
- Traffic Safety
- Automotive
- Landscaping

Comprehensive

Cable Management Systems



Cable Management Systems

The Perfect System

Our cable protectors feature a patented modular, interlocking design that can be customized to accommodate any number of cables. This innovative design makes setting up, dismantling, and storing the systems simple.

Checkers offer the most extensive line of high-performance cable/hose protection products in the world. Our range of durable cable protection systems provide a safer method of passage for pedestrian traffic, vehicles and heavy-duty equipment while protecting valuable electrical cables, cords and hose lines from damage.

To fit the needs of a wide variety of applications, we offer lidded, drop-over, and low-profile models constructed from all-weather polyurethane. We also offer rubber duct models for light duty applications.

Advantages of Using Checkers Cable Protection Systems

- Largest manufacturer of cable protectors in the world
- We manufacture the five most popular brands of cable/hose protectors in the industry
- Checkers Cable Protection Systems are manufactured in the USA in Broomfield, Colorado
- Our patented design and connector systems are the best in the industry
- We offer extensive accessories such as ADA/DDA compliant access ramps, protector bridges, 45° & 90° turns, and end caps
- Polyurethane construction is lighter and more durable than rubber imitations in extreme weather conditions
- Universal safety colours alerting all types of traffic to the products presence
- Only manufacturer in the world offering customized solutions including logos moulded into the product
- Multiple channel options so each cable and hose can have its own dedicated channel
- Modular interlocking design that makes setting up, dismantling and storing the product simple and straightforward
- Non-conductive material insulates and protects cords/cables, as well as people

Pictograms



Dog Bone patented connectors to extend to any length



Hourglass® patented connectors to extend to any length



5-Channel options so each cable, hose or line can have its own dedicated channel



Extreme heavy duty vehicle applications for load capacities exceeding 10 tons



L-Shaped patented connectors to extend to any length



Advanced modular system is fully expandable to hold an unlimited number of cables



3-Channel options so each cable, hose or line can have its own dedicated channel



Heavy duty vehicle applications for load capacities up to 10 tons



Gripper patented connectors to extend to any length



ADA/DDA Compliant Accessories



2-Channel options so each cable, hose or line can have its own dedicated channel



Heavy duty pedestrian applications



T-Shaped patented connectors to extend to any length



Low profile suitable for wheeled access (i.e. carts).



1-Channel option for a dedicated line or cable



Light duty pedestrian applications

Choosing the right model

Channel Size

5, 4, 3, 2, and 1-channel models. Make sure your cable/hose will fit into your desired cable protector based on channel width/height.

Connector Style

"Dog Bone", "T", Hourglass(R), and Gripper connectors available. Make sure your product will be compatible with previous style cable protectors you may already own.

Load Capacity

Determine the required load capacity for your application. Know what type of vehicles and pedestrian traffic will be crossing over your cable protectors.

General Rule

As the number of channels on the protector decreases, channel height increases (Does not apply to low profile and drop-over models).

Height/Slope

Cable protector height varies. Understand clearance your vehicles require: low profile models, ADA compliant ramps and unique accessories available if needed.

Reference Guide

| Connector | Range | Model No. | Maximum OD | Load Capacity (per axle) | No. of Channels | Page |
|-----------------|--|-------------|------------|--------------------------|-----------------|------|
| T | Linebacker® Series Heavy-Duty 5-Channel | CP5X125 | 3.43 cm | 18.280 kg | 5 | 11 |
| | Linebacker® Series Heavy-Duty 3-Channel | CP3X225 | 5.72 cm | 12.892 kg | 3 | 11 |
| Dog Bone | Yellow Jacket® Series Heavy-Duty 5-Channel | YJ5-125 | 2.54 cm | 14.787 kg | 5 | 13 |
| | Yellow Jacket® Series Heavy-Duty 3-Channel | YJ3-225 | 5.4 cm | 12.892 kg | 3 | 13 |
| | Yellow Jacket® Series Heavy-Duty 5-Channel ADA | YJ5-125-ADA | 3.37 cm | 9.526 kg | 5 | 15 |
| | Guard Dog® Series General Purpose 5-Channel | GD5X125 | 3.37 cm | 9.526 kg | 5 | 17 |
| | Guard Dog® Series General Purpose 3-Channel | GD3X225 | 5.8 cm | 12.892 kg | 3 | 17 |
| | Guard Dog® Series General Purpose 5-Channel ADA | GD5X125-ADA | 3.37 cm | 9.526 kg | 5 | 19 |
| | Guard Dog® Series Low Profile 5-Channel | GD5X75-ST | 1.9 cm | 21.772 kg | 5 | 21 |
| | Guard Dog® Series Low Profile 5-Channel w/ ADA Ramps | GD5X75 | 1.9 cm | 30,844 kg | 5 | 21 |
| | Guard Dog® Series Low Profile 3-Channel w/ ADA Ramps | GD3X75 | 1.9 cm | 24.492 kg | 3 | 21 |
| | Guard Dog® Series Low Profile 2-Channel w/ ADA Ramps | GD2X75 | 1.9 cm | 20,864 kg | 2 | 21 |
| Gripper | Grip Guard® Series Lightweight 5-Channel | GG5X125 | 3.18 cm | 4.534 kg | 5 | 23 |
| | Grip Guard® Series Lightweight 3-Channel | GG3X225 | 5.72 cm | 4.534 kg | 3 | 23 |
| | FastLane® Series Lightweight 1-Channel Drop-Over | FL1X1.5 | 1.27 cm | 954 kg | 1 | 25 |
| L | FastLane® Series Lightweight 1-Channel Drop-Over | FL1X4 | 2.54 cm | 954 kg | 1 | 25 |

Cable Management Systems **Linebacker®**



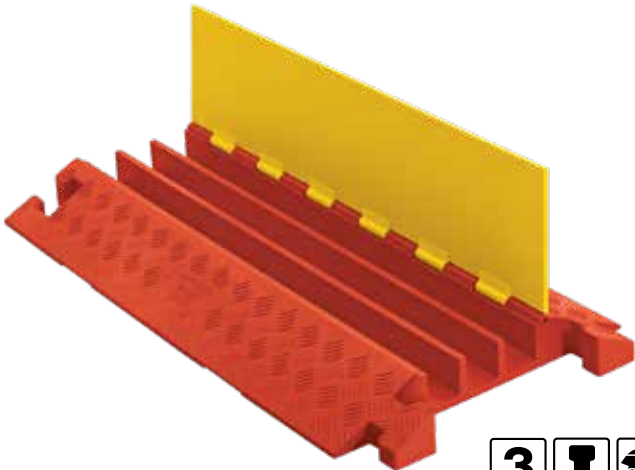
Linebacker® Heavy-Duty

Linebacker® Heavy-Duty Cable Protector with hinged lid provides a safer crossing for vehicles and pedestrian traffic while protecting valuable electrical cables and hose lines from damage in extreme weather conditions and work environments. Modular interlocking design is ideal for use in oil and gas applications, mining, military, and other industrial environments with heavy trucks and forklifts.

- Patented T-Connectors to extend to any length
- Patented 5-bar tread surface for maximum traction
- Reinforced hinged lid for easy cable placement
- Easy to transport, setup, disassemble and store
- All-weather UV-stabilized polyurethane material

3-Channel

- Protects cables and hoses up to 5.72 outside dia.
- Load Capacity 6.446 kg/Tire, 12.892 kg/Axle, Max load tested at 21°C



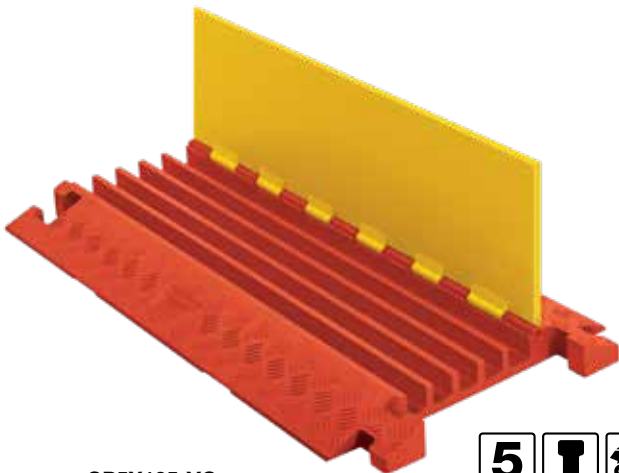
CP3X225-YO



| Model | Length (cm) | Width (cm) | Height (cm) | Channel Width (cm) | Maximum OD (cm) | Weight (kg) |
|------------|-------------|------------|-------------|--------------------|-----------------|-------------|
| CP3X225-YO | 91.4 | 50,8 | 7.7 | 5.7 | 5.7 | 12.7 |

5-Channel

- Protects cables and hoses up to 3.43 cm outside dia.
- Load Capacity 9.140 kg/Tire, 18.280 kg/Axle, Max load tested at 21°C



CP5X125-YO



| Model | Length (cm) | Width (cm) | Height (cm) | Channel Width (cm) | Maximum OD (cm) | Weight (kg) |
|------------|-------------|------------|-------------|--------------------|-----------------|-------------|
| CP5X125-YO | 91.4 | 50,8 | 5.7 | 3.4 | 3.4 | 11.3 |

Accessories



45° Left Turn: CPT5X125-L-YO



45° Right Turn: CPT5X125-R-YO



End Caps (Pair Only): CPEC5X125-O

Cable Management Systems

Yellow Jacket®



Yellow Jacket® Heavy-Duty

Yellow Jacket® Heavy-Duty Cable Protector with hinged lid provides a safer crossing in high volume traffic areas while protecting valuable electrical cables and hose lines from damage. Modular interlocking design is ideal for use in industrial, commercial, and public applications.

- The “original” cable protector
- Dog Bone Connectors to extend to any desired length
- Thick lid and base allow for high volume of traffic
- Hinged lid for easy cable placement
- Modular interlocking design

3-Channel

- Protects cables and hoses up to 5.4 cm outside dia.
- Load Capacity 6.446 kg/Tire, 12.892 kg/Axle, Max load tested at 21°C



YJ3-225-YB



| Model | Length (cm) | Width (cm) | Height (cm) | Channel Width (cm) | Maximum OD (cm) | Weight (kg) |
|------------|-------------|------------|-------------|--------------------|-----------------|-------------|
| YJ3-225-YB | 91.4 | 50,8 | 7.3 | 5.4 | 5.4 | 15.5 |

5-Channel

- Protects cables and hoses up to 3.43 cm outside dia.
- Load Capacity 9.140 kg/Tire, 14.787 kg/Axle, Max load tested at 21°C



YJ5-125-YB



| Model | Length (cm) | Width (cm) | Height (cm) | Channel Width (cm) | Maximum OD (cm) | Weight (kg) |
|------------|-------------|------------|-------------|--------------------|-----------------|-------------|
| YJ5-125-YB | 91.4 | 50,2 | 4.7 | 3.4 | 3.2 | 12.8 |

Accessories



45° Left Turn: YJ5TL-125-YB



45° Right Turn: YJ5TR-125-YB



End Caps (Pair Only): YJ5EB-125-Y

Cable Management Systems

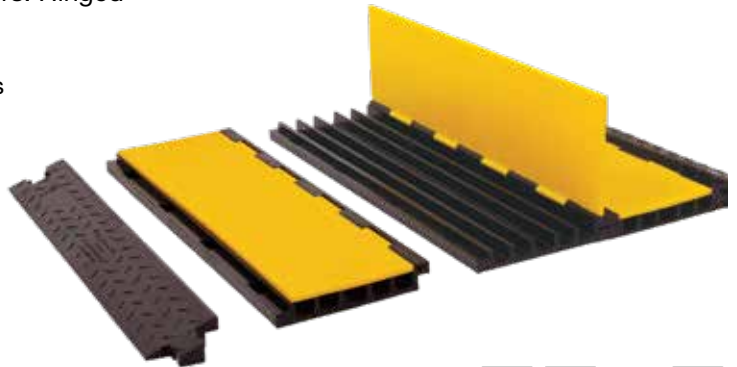
Yellow Jacket® AMS®



5-Channel Heavy-Duty Yellow Jacket® AMS® System

The Yellow Jacket® 5-channel AMS® (Advanced Modular System) is a patented technology that utilizes separate cable protector sections and ramps to create a system that is fully expandable to hold an unlimited number of cables. By detaching the ramps, you can also quickly add cable runs and ADA compatible side ramps to existing systems. The Yellow Jacket® AMS® readily handles heavy truck and bus traffic while providing easy access for pedestrians, carts, and wheelchairs. Hinged lids make for easy loading of cables and hoses.

- The System includes 1 AMS® center section and 1 pair of ramps
- Protects cables and hoses up to 1.25 cm outside diameter
- Connect unlimited center sections and add ramps
- Hinged lid for easy cable placement
- Patented technology with modular interlocking design
- Can be used with the YJ5 Interconnect to be used with the YJ5 standard ramps. (can only be used with one center section between side ramps)



YJ5-225-YB



| Model | Length (cm) | Width (cm) | Height (cm) | Channel Width (cm) | Maximum OD (cm) | Weight (kg) |
|-----------------|-------------|------------|-------------|--------------------|-----------------|-------------|
| YJ5-125-AD | 45.7 | 127 | 4.7 | 3.4 | 3.3 | 9.6 |
| YJ5-125AMSCTRYB | 91 | 30 | 5 | 3.4 | 3.3 | 7.3 |
| YJ5-125-AMS-F-B | 91 | 13 | 5 | - | - | 2.8 |
| YJ5-125-AMS-M-B | 91 | 13 | 5 | - | - | 2.8 |

AMS® Accessibility Ramps and Rails for 5-Channel Heavy-Duty Yellow Jacket®

5-Channel AMS® (Advanced Modular System) Accessibility Ramps and Rails feature a gradual slope and slip-resistant surface to ensure a safer crossing point for carts, forklifts, vehicles with small wheels and heavy trucks. In addition, each Accessibility Ramp system is manufactured to meet ADA and DDA compliant specifications. One-person installation - no tools required.

- Protects cables and hoses up to 3.17 cm outside dia.
- Load Capacity 7.393 kg/Tire, 14.787 kg/Axle, Max load tested at 21°C

AMS® Kit 1 includes:

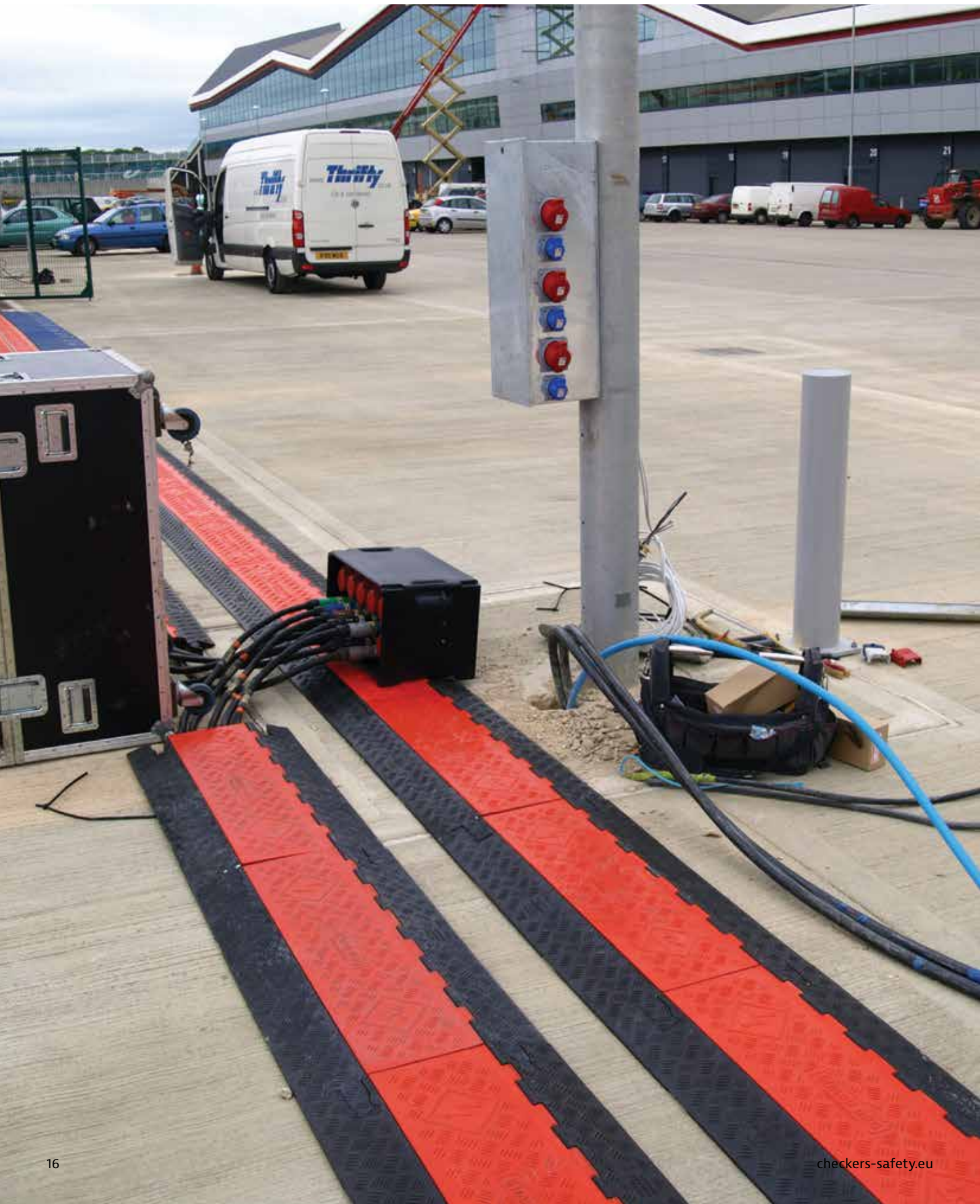
- 2 Yellow Ramps
- 4 Blue Side Ramps
- 2 AMS Centre Sections
- 2 Interconnects



| Model | Length (cm) | Width (cm) | Height (cm) | Channel Width (cm) | Maximum OD (cm) | Weight (kg) |
|-----------------|-------------|------------|-------------|--------------------|-----------------|-------------|
| WSA-125-KIT1-HS | 228.3 | 130.2 | 4.76 | 3.4 | 3.3 | 68.7 |

Cable Management Systems

Guard Dog®



Guard Dog® General Purpose

General Purpose Guard Dog® Cable Protector with hinged lid provides a safer crossing for vehicle and pedestrian traffic while protecting valuable electrical cables and hose lines from damage. Modular interlocking design is ideal for use in amusement parks, entertainment venues, sporting events, and most public, commercial, industrial, construction, and utility applications.

- Dog Bone Connectors to extend to any desired length
- Reinforced hinged lid for easy cable placement
- All-weather polyurethane construction
- Patented 5-bar tread surface for maximum traction
- Modular interlocking design for easy setup
- Includes four through-holes for temporary mounting



3-Channel

- Protects cables and hoses up to 5.72 cm outside dia.
- Load Capacity 6.446 kg/Tire, 12.892 kg/Axle, Max load tested at 21°C

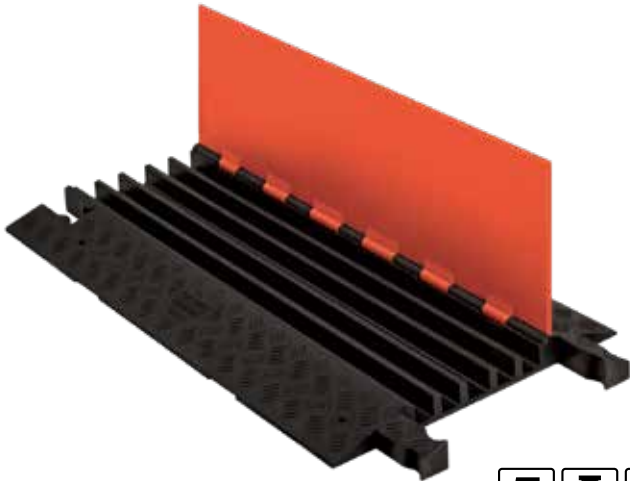


GD3X225-OB

| Model | Length (cm) | Width (cm) | Height (cm) | Channel Width (cm) | Maximum OD (cm) | Weight (kg) |
|-------------|-------------|------------|-------------|--------------------|-----------------|-------------|
| GD3X225-O/B | 91.4 | 51 | 7.7 | 5.7 | 5.7 | 13.6 |

5-Channel

- Protects cables and hoses up to 3.37 cm outside dia.
- Load Capacity 4.763 kg/Tire, 9.526 kg/Axle, Max load tested at 21°C



GD5X125-OB

| Model | Length (cm) | Width (cm) | Height (cm) | Channel Width (cm) | Maximum OD (cm) | Weight (kg) |
|-------------|-------------|------------|-------------|--------------------|-----------------|-------------|
| GD5X125-O/B | 91.4 | 50 | 4.7 | 3.4 | 3.3 | 9.6 |

Accessories:



45° Left Turn: GDT5X125-L-O/B



45° Right Turn: GDT5X125-R-O/B



End Caps (Pair Only): GDEC5x125-O

Cable Management Systems

Guard Dog® ADA/DDA



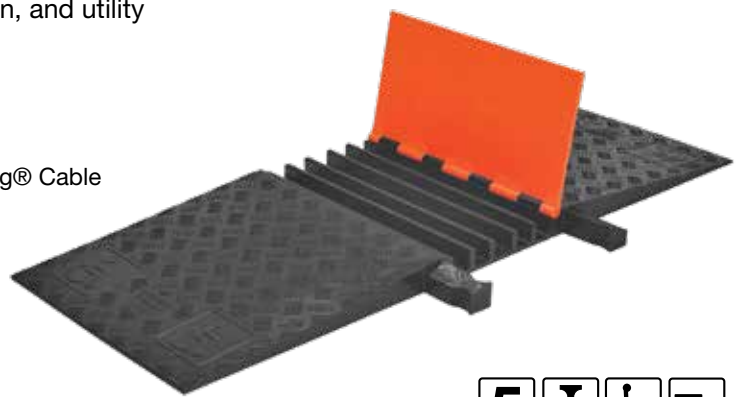
5-Channel General Purpose ADA/DDA Guard Dog®

5-Channel General Purpose ADA/DDA Guard Dog® Cable Protector has built-in ADA accessibility ramps to provide a safer crossing for vehicle and pedestrian traffic while protecting valuable electrical cables and hose lines. Because the ramps are built-in, there is no need for separate connectors.

Another unique feature of this product is that it interconnects directly to a 5-channel standard ramp Guard Dog® cable protector. This modular interlocking design is available in lightweight 45.7 cm sections and includes a recessed carrying handle on the underside of the protector.

Ideal for use in amusement parks, entertainment venues, sporting events, and most public, commercial, industrial, construction, and utility applications.

- Protects cables and hoses up to 3.37 cm outside dia.
- ADA/DDA accessibility ramps built in
- Interconnects directly to a Standard Ramp 5-Channel Guard Dog® Cable Protector
- Dog Bone Connectors to extend to any desired length
- Reinforced hinged lid for easy cable placement
- Load Capacity 4.763 kg/Tire, 9.526 kg/Axle, Max load tested at 21°C



GD5X125-ADA-OBLU

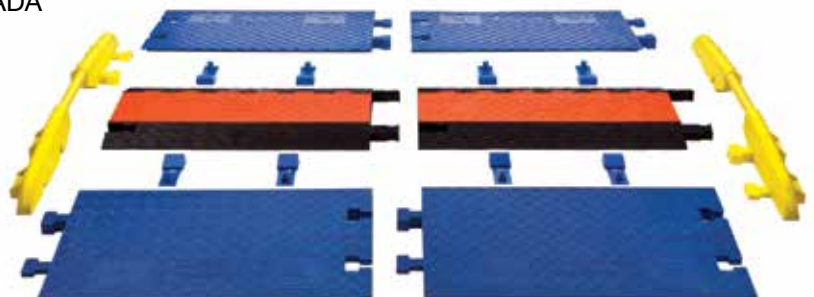


| Model | Length (cm) | Width (cm) | Height (cm) | Channel Width (cm) | Maximum OD (cm) | Weight (kg) |
|-----------------|-------------|------------|-------------|--------------------|-----------------|-------------|
| GD5X125-ADA-O/B | 45.7 | 127 | 4.7 | 3.4 | 3.3 | 9.6 |

Accessibility ramps and rails for 5-Channel General Purpose Guard Dog

5-Channel accessibility ramps and rails feature a gradual slope and slip-resistant surface to ensure a safer crossing point for carts, forklifts, vehicles with small wheels and heavy trucks. In addition, each ramp and rail system is manufactured to meet ADA and DDA compliant specifications.

- Patented, modular ADA/DDA Compliant ramps
- Still allows access to cables and cords
- Add ramps and rails when requirements specify
- One-person installation - no tools required



| Model | Length (cm) | Width (cm) | Height (cm) | Channel Width (cm) | Maximum OD (cm) | Weight (kg) |
|----------------|-------------|------------|-------------|--------------------|-----------------|-------------|
| CPRP-5GD-BLU | 45.7 | 127 | 4.7 | 3.4 | 3.3 | 9.6 |
| CPRL-5GD-Y | 45.7 | 127 | 4.7 | 3.4 | 3.3 | 9.6 |
| CPADACN-4/5-GD | 45.7 | 127 | 4.7 | 3.4 | 3.3 | 9.6 |

Cable Management Systems

Guard Dog® Low Profile



Guard Dog® Low Profile

Guard Dog® Low Profile models are the most compact top-loading cable protectors on the market. These protectors provide a safer crossing for vehicle and pedestrian traffic, while still maintaining a high load-bearing capacity for heavy equipment. The Low-Profile models are available with your choice of standard or ADA/DDA compliant ramps.

- Dog Bone Connectors to extend to any desired length
- Reinforced hinged lid for easy cable placement
- All-weather polyurethane construction
- Patented 5-bar tread surface for maximum traction
- Modular interlocking design for easy setup

5-Channel

- Protects cables and hoses up to 1.9 cm outside dia.
- Load Capacity 10,886 kg/Tire, 21.772 kg/Axle, Max load tested at 21°C
- Standard or ADA/DDA compliant ramps



GD5X75-ST-OB



GD5X75-OB



GD3X75-ST-OB



GD3X75-OB



GD2X75-ST-OB



GD2X75-OB



GD1X75-ST-OB



GD1X75-OB



3-Channel

- Protects cables and hoses up to 1.9 cm outside dia.
- Load Capacity 7.711 kg/Tire, 15.422 kg/Axle, Max load tested at 21°C
- ADA/DDA compliant ramps

2-Channel

- Protects cables and hoses up to 1.9 cm outside dia.
- Load Capacity 10,432 kg/Tire, 20,864 kg/Axle, Max load tested at 21°C
- ADA/DDA compliant ramps

1-Channel

- Protects cables and hoses up to 1.9 cm outside dia.
- Load Capacity 5.896 kg/Tire, 11.792 kg/Axle, Max load tested at 21°C
- Standard ramp

| Model | Description | Length (cm) | Width (cm) | Height (cm) | Channel Width (cm) | Maximum OD (cm) | Weight (kg) |
|---------------|----------------------|-------------|------------|-------------|--------------------|-----------------|-------------|
| GD5X75-ST-O/B | 5-CH w/Standard Ram | 91.4 | 43 | 3.2 | 3.2 | 1.9 | 6.7 |
| GD5X75-O/B | 5-CH w/ADA Ramp | 91.4 | 84.6 | 3.2 | 3.2 | 1.9 | 11.1 |
| GD3X75-ST-O/B | 3-CH w/Standard Ramp | 91.4 | 35 | 3.2 | 3.2 | 1.9 | 5.5 |
| GD3X75-O/B | 3-CH w/ADA Ramp | 91.4 | 77 | 3.2 | 3.2 | 1.9 | 10,6 |
| GD2X75-ST-O/B | 2-CH w/Standard Ramp | 91.4 | 30 | 3.2 | 3.2 | 1.9 | 4.1 |
| GD2X75-O/B | 2-CH w/Standard Ramp | 91.4 | 72 | 3.2 | 3.2 | 1.9 | 10,4 |
| GD1X75-ST-O/B | 1-CH w/Standard Ramp | 91.4 | 27.5 | 3.2 | 5.7 | 1.9 | 3.4 |
| GD1X75-O/B | 1-CH w/ADA Ramp | 91.4 | 69 | 3.2 | 5.7 | 1.9 | 9.5 |

Cable Management Systems

Grip Guard®



Lightweight Grip Guard® Cable Protectors

At a weight of only 5.8 kg, Grip Guard® is up to 60% lighter than other leading polyurethane 5-channel cable protectors, and up to 75% lighter than other rubber 5-channel cable protectors on the market.

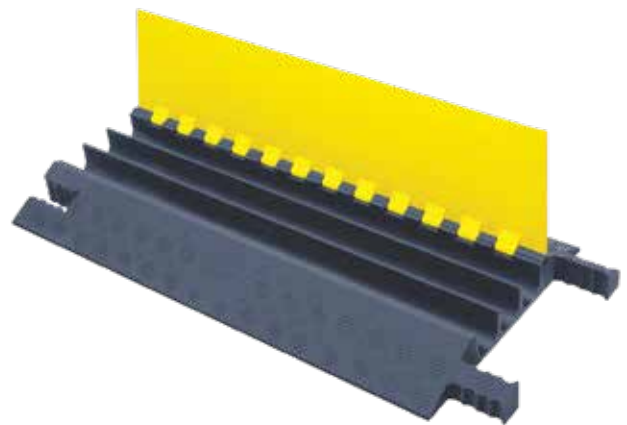
The Gripper Connector is ergonomically designed to fit your hand, which allows for easy handling and transport. This connector also locks multiple cable protectors tightly together to provide a safe crossing for vehicle and pedestrian traffic while protecting valuable electrical cables and hose lines.

This modular interlocking design is ideal for use in most public entertainment venues, light commercial, and utility applications where cable protection is needed.

- Patented 5-Bar tread pattern for maximum traction
- Made from tough, high impact absorbing, non-conductive polyurethane
- Resistant to oil, fuels and lubricants
- Recessed carrying handle moulded in to the underside of the protector
- Optional Anti-Slip Traction Kits for use on carpet or slick surfaces

3-Channel

- Protects cables and hoses up to 10.43 cm outside dia.
- Load Capacity 2.267 kg/Tire, 4.534 kg/Axle, Max load tested at 21°C

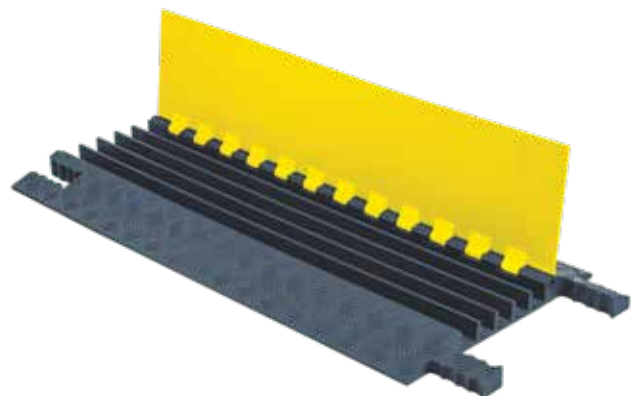


GG3X225-Y/GRY



5-Channel

- Protects cables and hoses up to 3.18 cm outside dia.
- Load Capacity 2.267 kg/Tire, 4.534 kg/Axle, Max load tested at 21°C



GG5X125-Y/GRY



Drop-Over Cable Protectors **Fastlane®**



Fastlane® Drop-Over

Fastlane® Lightweight Drop-Over Protectors are made from durable polyurethane and feature Heavy-Duty, patented L-Connectors for easily attaching additional protectors to extend to any desired length. Patented 5-bar tread plate surface provides maximum traction for carts and pedestrian traffic. These low-profile protectors fit multiple cable sizes and are compact for easy setup, disassembly and storage.

- Patented L-Connectors to extend to any length
- For lightweight vehicles and pedestrian traffic
- Patented 5-bar tread surface for maximum traction
- Universal safety colours (UV stabilized)
- Modular interlocking design for easy setup
- Available in black (B) and orange (O)

1-Channel

- Protects cables and hoses up to 1.27 cm outside dia.
- Load Capacity 447 kg/Tire, 954 kg/Axle, Max load tested at 21°C



FL1X1.5-O



| Model | Description | Length (cm) | Width (cm) | Height (cm) | Channel Width (cm) | Maximum OD (cm) | Weight (kg) |
|----------|----------------|-------------|------------|-------------|--------------------|-----------------|-------------|
| FL1X1.5* | 1.5 cm Channel | 91.4 | 46 | 1.9 | 3.8 | 1.3 | 1.4 |
| FL1X4* | 4 cm Channel | 91.4 | 27 | 3.8 | 10 | 2.5 | 3.6 |

*Available in black (B) and orange (O)

1-Channel

- Protects cables and hoses up to 2.54 cm outside dia.
- Load Capacity 447 kg/Tire, 954 kg/Axle, Max load tested at 21°C



FL1X4-O



| Model | Description | Length (cm) | Width (cm) | Height (cm) | Channel Width (cm) | Maximum OD (cm) | Weight (kg) |
|--------|--------------|-------------|------------|-------------|--------------------|-----------------|-------------|
| FL1X4* | 4 cm Channel | 91.4 | 27 | 3.8 | 10 | 2.5 | 3.6 |

*Available in black (B) and orange (O)

Accessories:

- Anti-Slip Rubber Pad Kit (includes 18 rubber pads) for FL1X1.5



CPRPKIT.75-18
Anti-Slip Rubber Pad Kit for FLX1.5-O

Hose Bridge Systems **Diamondback®**



1-Tunnel Large Hose Bridge Diamondback® Systems

Diamondback® Hose Bridge Systems provide protection for valuable cable and hose lines while ensuring a safer method of passage for vehicles. They replace wooden and metal fabricated ramps and can be used to protect lines up to 11.43 cm in diameter. High density, all-weather polyurethane construction protects from damage by physical pressure and reduces cable and hose maintenance and replacement costs. The lightweight, modular design of interlocking 40.6 cm wide sections provides multi-length flexibility. Diamondback® Hose Bridge Systems are intended for temporary installations only.



- Protect large lines up to 11.43 cm outside diameter
- Single or multiple tunnel systems available
- Reduces maintenance and replacement costs
- Modular interlocking design for easy setup, transport & storage
- Polyurethane construction is abrasion, impact and weather resistant with high load-bearing capacity
- Diamond-plate tread surface increases traction
- Yellow caution colour for high visibility
- Built-in hand holds allow for handling with ease and double as attachment points for mounting brackets
- Load Capacity 8.754 kg

| Bridge Length | Bridge Width | Bridge Height | Tunnel Diameter | Tunnel Top Length | Tunnel Base Length | Ramp Top Length | Ramp | Base Length | System Weight |
|---------------|--------------|---------------|-----------------|-------------------|--------------------|-----------------|---------|-------------|---------------|
| UHB4045 | 111.8 cm | 40.6 cm | 14.1 cm | 11.43 cm | 19.8 cm | 39.9 cm | 46.6 cm | 36.4 cm | 22.7 kg |

Diamondback® Hose Bridge Systems can be customized to any number of tunnels or length. Building a custom system is as easy as ordering tunnels connectors and the individual components separately.

- Tunnel
- Ramps (Pair)
- Tunnel Connector
- UHB4045T 4.5" Tunnel 41 x 25 x 46 x 10.2 cm
- UHB4045R 4.5" Ramps 41 x 25 x 46 x 14.3 cm
- UHB4045TC 4.5" Tunnel Connector 41 x 25 x 46 x 10.2 cm



Warning: Vehicles crossing bridge system must have clearance of greater than bridge height.

Warning: Hose Bridges are for rubber-tired vehicles only (not for equipment with metal tracks)

Warning: Tunnel diameter does not take into consideration hose expansion

Down-to-Earth

Wheel Chocks



Heavy-Duty Wheel Chocks

Includes the MC and AT Series wheel chocks. Urethane makes chocks durable, lightweight and easy to use. These heavy-duty wheel chocks are ideal for heavy equipment, haul trucks, loaders, cranes, underground mining vehicles, fire engines and trucks, large military tactical vehicles.

After thorough testing, the MC series wheel chocks are approved and used by Caterpillar in mines worldwide.

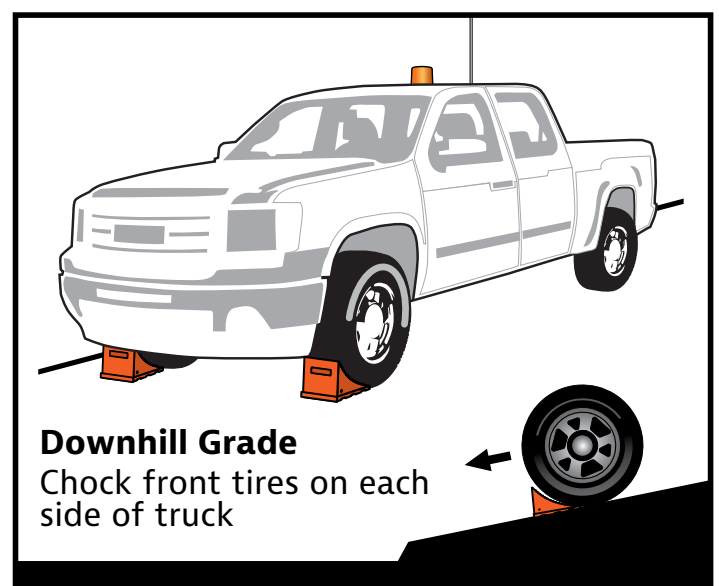
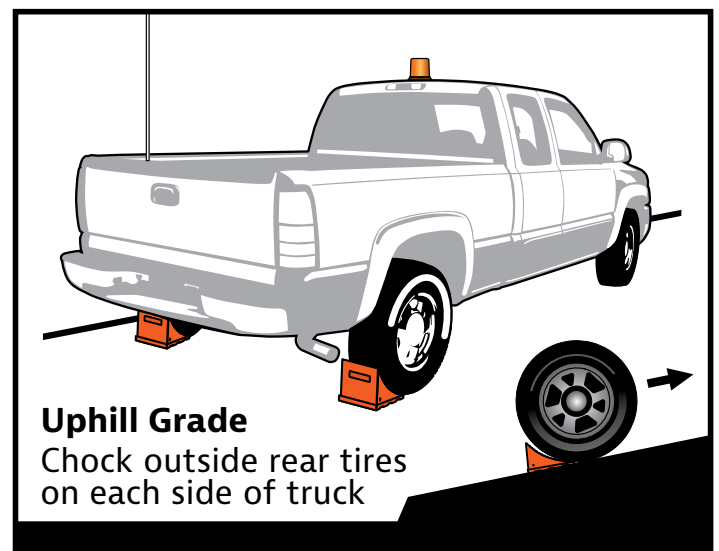
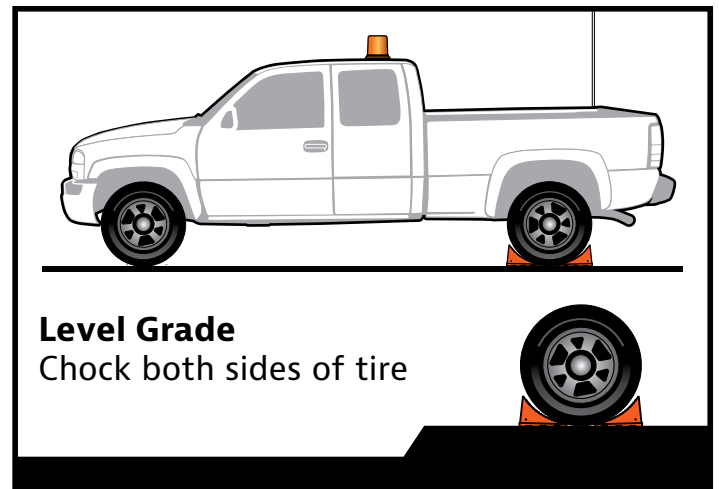
General Purpose Wheel Chocks

Includes the UC Series wheel chocks. UC Series is constructed of durable, impact-absorbing urethane, creating a lightweight, easy to use chock. Ideal for over the road trucks, trailers, pickups, utility vehicles. UC chocks have been 3rd party tested, certified and trusted by fleets globally.

Advantages of Using Wheel Chocks by Checkers

- Polyurethane wheel chocks are resistant to extreme weather conditions, tears, abrasions, oils, and solvents
- Polyurethane chocks are extremely lightweight compared to excessive steel and aluminium counterparts.
- Long-lasting product life span results in cost savings
- Checkers produces a wheel chock for virtually every type of tire-based vehicle
- Our wheel chocks are engineered to reduce damage to your vehicle's tires
- High visibility safety colours are used on most of our wheel chocks
- Checkers wheel chocks satisfy MSHA, OSHA, SAE, NFPA, and DOT compliance standards
- Recessed carrying handles included on most models.
- Mounting brackets available for most models

Proper Chocking Procedures



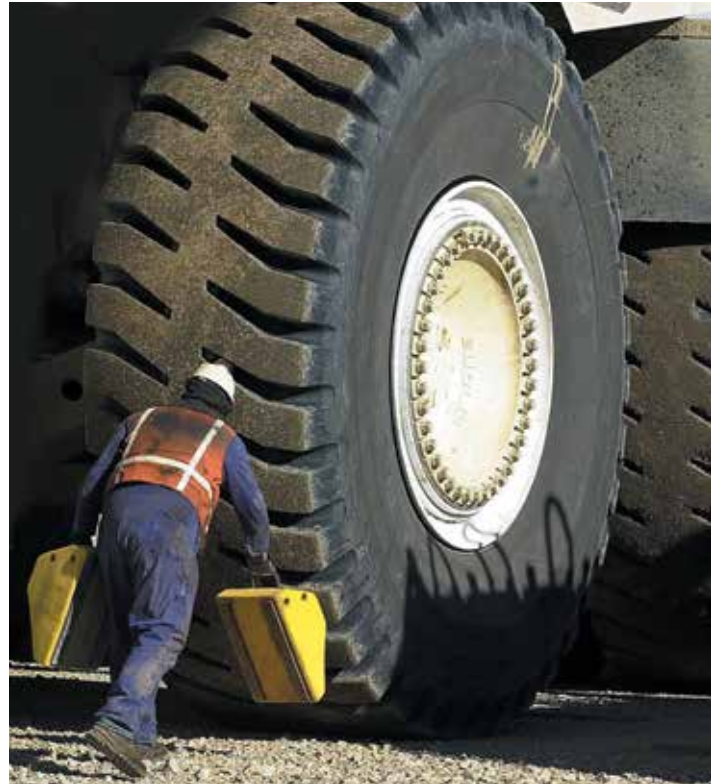
Wheel Chocks

Chocks You Can Trust

Checkers offers a wide variety of vehicle-based safety solutions. Products include wheel chocks, cribbing, warning whips, barricade lights, industrial signals and beacons, vehicle identification signs, parking lot safety solutions, and more. Through our continued growth and innovation, Checkers is positioned to continue to serve as your leading global provider of motion safety solutions.

Checkers Wheel Chocks

Checkers' wheel chocks are a best-in-class chocking solution that keeps both equipment and workers safe. Our chocks are used around the world and are offered in sizes to fit almost any vehicle. Our warning whips are built with high quality materials and are designed to make vehicles and points of interest more visible. They are critical to safety on job sites that utilize large equipment, so that smaller vehicles can still be seen.



Since the mid 1980s, Checkers has led the way in developing reliable wheel chocks for a wide range of industries. With advanced engineering and manufacturing techniques, we have set the standard for wheel chock safety worldwide.

Checkers Wheel Chocks comply with the safety requirements of a variety of industries and ensure a safe working environment while your vehicles are at rest. Offered in a variety of styles, our wheel chocks provide a safe chocking solution for any type of vehicle.

Checkers Wheel Chocks were engineered in collaboration with safety experts to work with a wide range of ground equipment, commercial, and military vehicles. Whether you are chocking a fully-loaded 400-ton haul truck or a utility trailer, we have the wheel chocks you need to safely secure your vehicle and meet compliance standards.

Checkers Wheel Chocks have been field-tested by expert Checkers team members under various conditions to prove our products prevent non-motorized, uncontrolled movement of on and off-road vehicles. Checkers has also worked with a third-party laboratory to certify that each model meets the specifications indicated on the Checkers Wheel Chock Reference Guide. Specific models of our Checkers Wheel Chocks meet specifications required by MSHA (Mine Safety and Health Administration), OSHA (Occupational Safety and Health Administration), SAE (Society of Automotive Engineers), NFPA (National Fire Protection Agency), and the DOT (Department of Transportation).



Choosing the Right Model

Tire Diameter

Be sure to pick the necessary Checkers wheel chock based upon your vehicle's tire diameter.

Surface

Know what type of ground you will be placing your wheel chock on when making your selection. Whether it's a gravel or paved surface, Checkers manufactures wheel chocks that adhere to all types of surfaces.

Gross Vehicle Weight

Be sure you understand the vehicle's gross operating weight to ensure you select the correct wheel chock for your specific requirement.

Reference Guide

| Tire Diameter Range Gross Vehicle Operating Weight | Up to 81.3 cm Diameter | Up to 88.9 cm Diameter | Up to 96.5 cm Diameter | Up to 116.8 cm Diameter | Up to 165.1 cm Diameter | Up to 241.3 cm Diameter | Up to 266.7 cm Diameter | Up to 360.7 cm Diameter | Up to 419.1 cm Diameter |
|--|------------------------------|------------------------------|------------------------------|-------------------------------|-------------------------------|-------------------------------|-------------------------------|-------------------------------|--------------------------------|
| Up to 13.608 kg | UC1700 UC1400-4.5 | UC1700 | UC1500-4.5 | UC1500-4.5 | MC3009 UC1210 | MC3010 | | | |
| Up to 18.144 kg | UC1600 UC1400-6 | UC1600 | UC1500-6 | UC1500-6 | MC3009 UC1210 | MC3010 | MC3010 | | |
| Up to 22.680 kg | UC1400-6 | UC1500-4.5 | UC1500-6 | UC1500-6 | MC3009 UC1210 | MC3010 | MC3010 | | |
| Up to 27.216 kg | UC1500-4.5 UC1400-6 | UC1500-4.5 | UC1500-6 | UC1500-6 | MC3009 UC1210 | MC3010 | MC3010 | | |
| Up to 31.751 kg | UC1500-6 | UC1500-6 | | | | MC3010 | MC3010 | | |
| Up to 36.287 kg | | | | | | MC3010 | MC3010 | | |
| Up to 68.039 kg *35 ton | | | | | | MC3010 | MC3010 | MC3012 | MC3011 |
| Up to 111.130 kg *70 ton | | | | | | MC3010 | MC3010 | MC3012 | MC3011 |
| Up to 166.015 kg *100 ton | | | | | | MC3010 | MC3010 | MC3012 | MC3011 |
| Up to 249.476 kg *165 ton | | | | | | MC3010 | MC3010 | MC3012 | MC3011 |
| Up to 387.821 kg *240 ton | | | | | | MC3012 | MC3012 | MC3012 | MC3011 |
| Up to 725.748 kg *400 ton | | | | | | MC3011 | MC3011 | MC3011 | MC3011 (Min. 4 Required) |
| Up to 725.748 kg *400 ton | | | | | | | MC3000 | MC3000 | MC3000 (Only 2 Required) |

Wheel Chocks **Monster Chocks®**



Heavy-Duty MC Series

Checkers Heavy-Duty MC Series Wheel Chocks are manufactured with highly durable, lightweight polyurethane construction. With a larger base than our UC or AT models, the MC3000 Series is ideal for use with heavy equipment such as haul trucks, loaders, and cranes or for mine support equipment such as lubrication trucks and maintenance vehicles.

- The #1 selling wheel chocks in the mining industry
- MC series wheel chocks are approved and used by Caterpillar and mines worldwide
- Tough, weather-resistant urethane construction is resistant to oils, fuels, and solvents
- Meets MSHA specifications
- Safety yellow colour
- Recessed carrying handle and mounting hole for ropes, chains or brackets
- Replaceable rubber anti-slip traction pads with aluminium mounting plates to resist delamination due to corrosion
- Moulded-in ANSI Z535.4 compliant proper chocking guidelines with colour illustrations

MC3011

- Recommended tire diameter 241.3 cm to 419.1 cm
- Use two MC3011 for Gross Vehicle Operating Weight up to 387.821 kg OR for Payloads up to 240 tons* (217.724 kg)
- Use four MC3011 for Gross Vehicle Operating Weight up to 725.748 kg OR for Payloads up to 400 tons* (362.874 kg)

MC3012

- Recommended tire diameter 241.3 cm to 360.7 cm
- Max Gross Vehicle Operating Weight up to 855.000 lbs. or 387.821 kg
- For Payloads up to 255 tons* (231.332 kg) use two MC3012

MC3010

- Recommended tire diameter 165.1 cm to 266.7 cm
- Max Gross Vehicle Operating Weight up to 550,000 lbs. or 249.476 kg
- For Payloads up to 165 tons* (149.685 kg) use two MC3010

MC3009

- Recommended tire diameter 116.8 cm to 165.1 cm
- Max Gross Vehicle Operating Weight up to 111.130 kg
- For Payloads up to 70 tons* (63.503 kg) use two MC3009

MC1900 Series Mounting Bracket

- Universal Dual Mounting Bracket holds 2 each of MC Series



MC3011



MC3012



MC3010



MC3009

Wheel Chocks

Urethane Chocks



General Purpose UC Series

Checkers General Purpose UC Series Wheel Chocks are manufactured with highly durable, lightweight polyurethane. These chocks are ideal for use with over-the-road trucks, trailers, pickups and utility vehicles.

- Highly durable, lightweight construction
- Weather-resistant polyurethane construction
- Resistant to oils, fuels, and solvents
- 3rd party tested, certified and trusted by fleets globally
- High visibility orange color
- Recessed carrying handle and mounting hole for ropes or chains
- Sold by piece or by pair

UC1210

- Recommended tire diameter 116.8 cm to 165 cm
- For mining and construction haul trucks and support equipment
- Max Gross Vehicle Operating Weight up to 245.000 lbs. or 111.130 kg
- For payloads up to 70 tons* (63.503 kg) use two UC1210
- Molded-in "How to Use" guidelines



UC1210

UC1500

- Recommended tire diameter 81.3 cm to 116.8 cm
- UC1500-4.5 is certified for a gross vehicle operating weight up to 22.680 kg
- UC1500-6 is certified for a gross vehicle operating weight up to 31.751 kg



UC1500

UC1700

- Recommended tire diameter 68.6 cm to 89 cm
- UC1700 is certified for a gross vehicle operating weight up to 30,000 lb. or 13.608 kg



UC1700

UCTS003

- For light weight general purpose applications
- Grooved, stepped edges help grip and provide more tire traction
- Eyebolt to use as a handle or connect with a rope
- Up to a 9071.85 kg load capacity (up to 11% grade)



UCTS003

Aviation Chocks



Aviation Chocks

Aviation Wheel Chocks are made of highly durable, lightweight polyurethane. AC Chocks last longer than wood chocks, never need painting and eliminate Foreign Object Damage (FOD) threats to aircraft. Checkers manufactures a large range of aviation chocks series ideal for private, commercial, cargo and military aircraft.

- Material: UV-stabilized polyurethane
- Impact-absorbing urethane
- Weather and abrasion resistant
- High load-bearing capacity
- Resistant to aircraft fuels, oils, and lubricants
- Eliminates Foreign Object Damage (FOD)
- Designed for large and oversized aircraft

Key Considerations:

Safety Chocks prevent vehicles from rolling away on work sites or military sites, protecting site personnel.

Asset Protection Vehicles damage can be avoided with proper chocking procedures.

Regulation compliance Various chocking regulations exist across nearly all industries and institutions

Polyurethane chocks are extensively tested and qualified "Polyurethane chocks will not chip or splinter, which avoids FOD." Polyurethane chocks are designed not to warp, even in the presence of moisture. Polyurethane chocks are lighter than wood, making them easy to position and align.

Checkers P/N AC6856-LR urethane chocks have been tested per MIL-PRF-32058. paragraph 4.4 and qualified for use in the U.S. Air Force by Mr. Jason Brown, Mechanical Engineer 542nd Support Equipment at Warner Robbins AFB Ga.

The Systems Program office at Tinker AFB has determined that Monster P/N AC6856-LR urethane chock is suitable for use on C/KC-135 aircraft, and has been added to T.O. 1C-135(K)R-2-2JG-1 as an approved wheel chock.



Why Polyurethane Aviation Chocks?

- Polyurethane will not crack.
- Polyurethane will not warp, even in the presence of water and moisture.
- Polyurethane chocks will not chip or splinter, which avoids FOD.
- Aircraft fluids have no effect on polyurethane.
- Due to its composition, polyurethane will not freeze to ramps or any other surfaces.
- High strength does not mean heavy; polyurethane chocks are only 33 lbs. each.
- As polyurethane is an inorganic material, it will not mould or rot.
- The polyurethane is coloured, meaning Checkers wheel chocks never need to be painted.



Parking & Traffic Safety Products

Responsive



Traffic Calming and Parking Lot Safety Solutions

Checkers™ traffic calming and parking lot safety products are efficient, high quality solutions. Designed for speed reduction, these solutions keep roads and parking lots safe for both motorists and pedestrians. Checkers speed bumps, speed humps, and car stops are long lasting, easy to install, and environmentally friendly.

Checkers is a full-service manufacturer of parking lot safety solutions. We design and manufacture traffic control products that help cars navigate and park safely. Our main goal is to create solutions that protect motorists and pedestrians from the perils of today's parking lots. As such, Checkers' products have been designed and developed with speed reduction, driver and pedestrian safety in mind. All our solutions are manufactured from 100% recycled rubber which longer lasting, highly visible, and more car-friendly than asphalt or concrete alternatives. Not only are Checkers traffic safety solutions environmentally friendly, they can also be installed for both temporary or permanent use and are the ideal maintenance-free parking lot solution. In addition to enhancing parking lot safety, a proper parking lot plan can lower insurance premiums for lot owners.



Why Checkers Recycled Rubber Parking Lot Solutions:

- Rubber speed bumps greatly outlast concrete or asphalt competitors
- Rubber speed bumps don't degrade like concrete speed bumps, keeping parking lots aesthetically pleasing
- High-quality rubber is resistant to weather, salts, and chemicals
- Recycled rubber construction is environmentally friendly
- Pliable rubber protects vehicles as well as curbs
- Highly reflective coloured tape ensures the parking stop will be visible
- Easy to install, either on asphalt or concrete surfaces
- Can be used for temporary or permanent applications
- Great for commercial and residential applications
- Highly reflective tape to ensure that the speed bumps parking stops are visible even on a dark night.
- Cats eye reflectors further enhance visibility to alert drivers well in advance
- The bumps have a channelled bottom to facilitate drainage as well as to cover cabling or piping
- End caps available and sold separately
- Rebar spikes and lag bolts for secure installation in either concrete or ground

Parking & Traffic Safety Products

Speed Bumps



Recycled Rubber Speed Bumps

Control traffic speed almost anywhere!

- Brings vehicle to controlled, safe speed
- Made from recycled rubber
- Moulded reflective tape
- Easy to install with rebar spikes on asphalt surfaces and lag bolts and shields on concrete surfaces
- Warranty: 3 years on the product and 1 year on the tape (under normal use)



Safety Rider® V Mini Speed Humps

- Interlocking tongue and groove system
- Yellow reflective tape on mid-sections and end caps helps reduce trip hazards
- Module units can cover width of any roadway
- Ideal in front of gates, toll booths and all parking access facilities
- Mounting hardware included

| Model | Description | Length (cm) | Width (cm) | Height (cm) | Weight (kg) | Mounting Holes |
|--------|----------------|-------------|------------|-------------|-------------|----------------|
| 23500V | Centre | 90 | 50 | 5 | 16.4 | 6 |
| 2350 | End Cap Male | 90 | 50 | 5 | 14.5 | 6 |
| 23502V | End Cap Female | 90 | 50 | 5 | 14.5 | 6 |

Easy Rider® Recycled Rubber Speed Bumps

- Recommended for high pedestrian areas
- Moulded reflective tape & cat eye reflectors
- Channelled bottom covers cabling
- End caps



| Model | Length (cm) | Width (cm) | Height (cm) | Weight (kg) | Weight | Mounting Holes |
|-------|-------------|------------|-------------|-------------|--------|----------------|
| 26111 | Centre 180 | 180 | 30 | 5.7 | 23.2 | 4 |
| 24111 | Centre 120 | 120 | 30 | 5.7 | 14.5 | 3 |
| 26999 | End Cap | 22 | 30 | 5.7 | 2.5 | 1 |

Recycled Rubber Speed Bumps Mounting Hardware

91400 Rebar spike 36 cm

91400G Galvanized rebar spike 36 cm

91500 Lag Bolt for concrete use 15 cm

91501 Lead Shield for Concrete Use

Parking & Traffic Safety Products

Park-It® Parking Stops



Park-It®

The smartest, safest parking devices! With molded reflective tape, available with yellow or white, these parking stops are sure to be seen. They easily install with rebar spikes on asphalt surfaces and lag bolts and shields on concrete surfaces.

- Available in black/yellow and black/white versions
- Available in 90, 120 and 180 cm lengths
- Easy to install with rebar spikes on asphalt surfaces and lag bolts and shields on concrete surfaces



| Model | Description | Length (cm) | Width (cm) | Height (cm) | Weight (kg) | Mounting Holes |
|-------|---------------------|-------------|------------|-------------|-------------|----------------|
| 13101 | 3 ft Park-It Yellow | 90 | 15 | 10 | 7.7 | 2 |
| 14101 | 4 ft Park-It Yellow | 120 | 15 | 10 | 10,5 | 3 |
| 16101 | 6 ft Park-It Yellow | 180 | 15 | 10 | 15.5 | 4 |

Mini Park-It®

The smartest, safest parking devices!
Simple installation by one person for temporary or permanent solutions 1/10th the weight of a standard concrete curb



| Model | Description | Length (cm) | Width (cm) | Height (cm) | Weight (kg) | Mounting Holes |
|-------|--------------|-------------|------------|-------------|-------------|----------------|
| 13190 | Mini Park-It | 55 | 15 | 10 | 4.1 | 2 |

Ground Protection & Ground Stabilization

Trusted



TuffTrak® Ground Protection



TuffTrak® is the market leader in temporary access roads and ground protection solutions. We are committed to making quality products and delivering the highest levels of performance, quality and value.

As part of our commitment to providing quality and performance, we play an active role in ensuring that our customers get the best out of our products. Our success is built on listening to and responding to our customers' specific requirements and problems, as we strive to provide them with cost effective and an innovative solution. We understand that safety is paramount, speed of deployment is critical, and durability standards need to meet the toughest and most extreme working environments. We take the time to fully understand our customers' unique and specific project requirements considering ground and weather conditions as well as the range of vehicles, construction site or plant and personnel involved in their project.

Why Ground Protection Mats?

Ground conditions play a significant role in field operations and projects that need access to remote sites. Wet, muddy or uneven ground conditions can cause projects

to be delayed or even halted. This can lead to significant commercial loss such as unrecoverable management time, loss of reputation and effect on future workloads. Unstable ground conditions are also frequent cause of minor incidents and near misses on sites. Even worse, complete failure of the ground has caused serious injuries and fatalities.

Trackway panels get heavy equipment safely through mud, sand, snow and swampland conditions by creating temporary access roads and working platforms. Access to and from remote sites and a stable work area are a critical safety solution in the oil & gas, drilling, transmission, renewable energy, utilities, civil engineering, infrastructure, and construction industries.

Ground protection mats also prevent environmental damage to agricultural land, heritage sites or sensitive eco systems and cross contamination between sites.

Ground protection mats can also be used for stadiums, events, golf courses, landscaping, tree care, cemeteries; wherever saving the costs of remedial ground restoration is a factor. The ground protection mats are then used to create temporary access roads, parking lots, or walkways providing safe pedestrian and access routes for the duration of an event while virtually eliminating severe rutting or damage to ground and landscaping and can ensure that vehicles, machinery and people can move freely on projects without becoming stuck in the mud or damaging sensitive ground, natural grass or turf.

Turf protection panels and mats were specifically developed for applications that demand precautions be used to avoid the burning and/or brown-out effects of heat caused by sun and high heat work environment. Some specific applications will be found in the turf and landscape markets such as golf courses, irrigation, and pool installers as well as for events and in stadiums.

TuffTrak® ground protection mats are the popular choice among professionals. They are easy to use, quick to deploy, lock into place to form a continuous, solid, safe and durable roadway or working platform. They are unequalled for quality and performance even under the most hazardous conditions.

Ground Protection Mats

TuffTrak® has a full range of market leading heavy duty composite ground protection mats delivering a safer working environment for temporary access roadways, trackways, and working platforms. Our heavy duty mats are capable of supporting heavy loads in excess of 600 psi* and are highly resilient even in the most extreme weather and ground conditions. With our diverse range of heavy duty mats, TuffTrak® is able to provide you with a heavy duty ground protection solution for any application.

Medium Duty Temporary Access Matting **AlturnaMat®**



AlturnaMat®

AlturnaMat® is a high load capacity mat boasting an aggressive diamond plate tread design and a high load capacity ideal for use over soft or sensitive ground conditions in the construction, civil engineering, ground work, and events industries.

These rugged mats are made of 12.7 mm thick polyethylene making them virtually indestructible. AlturnaMat® can withstand loads of up to 120 tons*, and its flexible construction means that these mats will follow the contours of the ground to deliver a highly effective access solution over undulating or sloping ground conditions.

Weighing just 39 kg at its maximum size and just 9.75 kg at its smallest, AlturnaMat® can be easily deployed and manoeuvred by a two-person team with the added convenience of strategically positioned hand holes.

AlturnaMat® can be connected together using Turn-A-Links or EZ Link connectors to create a secure trackway or workpad.

Recommended use:

Medium duty as temporary roadways, pedestrian pathways, work areas for plant and machinery, drilling rigs, depot or storage areas.

Specifications:

- 100% recycled high density polyethylene
- Diamond cleat tread surface providing impressive grip
- Hand holes for easy manoeuvrability
- Lightweight and can easily be moved by a two person team
- Various connector options available to suit different ground conditions 4 connection points at each corner of the mat

Colours:

- Black

Stock sizes:

- 2440 mm x 1220 mm

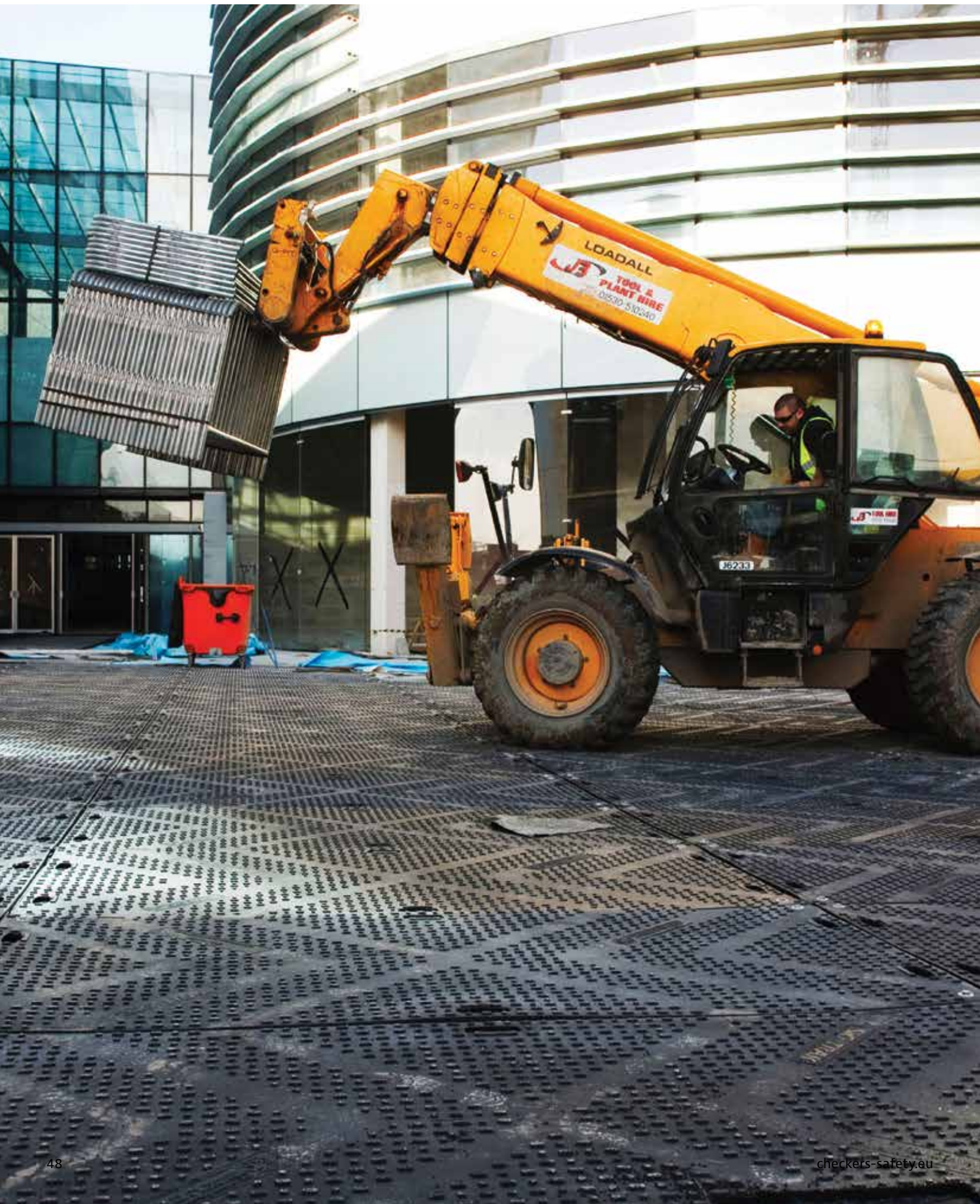
Accessories:

- 2-way or 4-way connectors



| Art. Nr. | Description | Sizes | Capacity (tons) | Weight |
|------------|---------------------|---------------------|-----------------|--------|
| TTMSAM01BL | AlturnaMat® - Black | 2440 x 1220 x 18 mm | 120 | 39 kg |

Medium Duty Ground Protection Matting **EuroMat®**

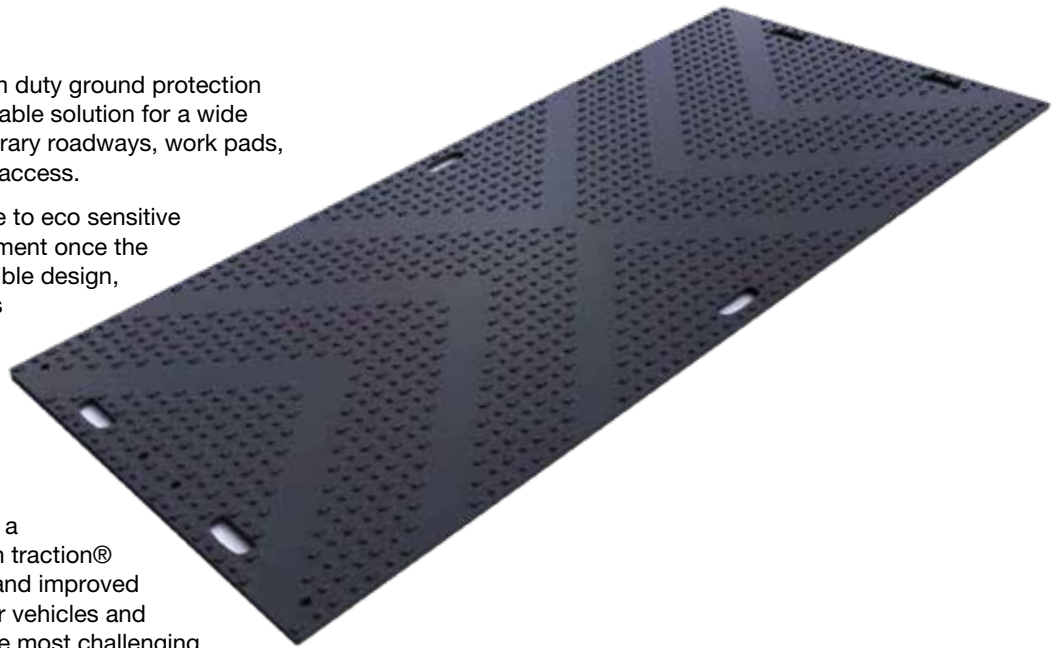


EuroMat®

EuroMat® is a market leading medium duty ground protection mat designed as an ideal man-handleable solution for a wide range of applications including temporary roadways, work pads, depot storage areas or as pedestrian access.

EuroMat significantly reduces damage to eco sensitive areas, avoiding the need for reinstatement once the project is complete. Thanks to its flexible design, EuroMat is able to follow the contours of undulating or sloping ground conditions.

Light in weight at just 35 kg, EuroMat has strategically positioned hand holes for ease of use when handling. EuroMat is fast and easy to offload and install, easily deployed by a two-person team. The unique chevron traction® surface design delivers superior grip and improved forward motion of heavy equipment or vehicles and reduces side way slippage, even in the most challenging weather or ground conditions.



Recommended use:

- Medium duty - as temporary roadways, pedestrian pathways, work areas for plant and machinery, drilling rigs, depot or storage areas.

Specifications:

- 100% recycled high density polyethylene (HDPE)
- Load bearing capacity up to 120 tonnes*
- Unique chevron traction® surface for maximum grip
- Low profile surface option for pedestrian walkways and outdoor events
- Lightweight and easily carried and placed by two people
- Hand holes for ease of handling – fast and easy to install
- Moulds to uneven or undulating ground conditions due to its flexible design

Colours:

- Black
- Grey

Sizes:

- 2410 x 1200 x 12 mm
- 2410 x 600 x 12 mm

Accessories:

- 2-way or 4-way connectors
- FastFit connector
- Metal plate
- Assembly bolts
- Stillage

| Art. Nr. | Description | Sizes | Capacity (tons) | Weight |
|------------|---------------------------|---------------------|-----------------|---------|
| TTMSEM03BL | EuroMat® Ped/Chev | 2410 x 1200 x 12 mm | 120 | 35 kg |
| TTMSEM03CV | EuroMat® Chev/Chev | 2410 x 1200 x 12 mm | 120 | 35 kg |
| TTMSEM03S1 | EuroMat® Smooth One Side* | 2410 x 1200 x 12 mm | 80 | 35 kg |
| TTMSEM03GY | EuroMat® Virgin Natural* | 2410 x 1200 x 12 mm | 80 | 35 kg |
| TTMSEM07BL | EuroMat® Half track* | 2410 x 600 x 12 mm | 120 | 17.5 kg |

*subject to ground conditions

Medium Duty Ground Protection Matting

EuroMat® LT



EuroMat® LT

EuroMat® LT ground protection mat prevents grass, wet, and soft soil from being compacted, damaged or rutted by machinery, vehicles, and heavy pedestrian traffic. Manufactured from 100% recycled polyethylene, EuroMat® LT provides a safe, reusable, economical, and environmentally friendly alternative to plywood. Unlike plywood, EuroMat® LT is weatherproof, flexible, and less likely to break and splinter. The textured slip-resistant surface offers traction for pedestrians and light vehicles even in wet conditions.

EuroMat® LT can be easily deployed for temporary applications as lawn protection and event flooring or can be installed for prolonged periods for light to medium vehicle or pedestrian traffic in medium to firm ground conditions. EuroMat® LT is a light-duty temporary cover that can be used in a wide range of applications within the construction, landscaping, excavation, groundwork, and events industries.

Recommended use:

- Medium duty - For use as temporary roadways, pedestrian pathways, work areas for plant and machinery, drilling rigs, depot or storage areas.

Specifications:

- Lightweight and easily carried and placed by two people
- Made from 100% recycled polyethylene
- Fast and easy to transport and install
- Rot proof, water resistant and maintenance free
- Durable, tough and impact resistant – no splintering
- Lower whole-life cost to timber and plywood
- Protection of soft or sensitive surfaces from machinery, vehicles and pedestrians

Colours:

- Black

Sizes:

- 2400 mm x 1200 mm

Accessories:

- 2-way or 4-way connectors
- FastFit connector
- Metal plate
- Assembly bolts



| Art. Nr. | Description | Sizes | Capacity (tons) | Weight |
|------------|---------------|--------------------|-----------------|--------|
| TTMSEL03BL | EuroMat® Lite | 2400x 1200 x 12 mm | 20 | 32 kg |

Medium Duty Ground Protection Matting **EconoMatMB™**



EconoMatMB™

EconoMatMB™ has been specifically developed as an efficient alternative to traditional builders plywood providing a low cost, easy to deploy, reusable product for a wide range of uses within the construction, groundwork and events industries. Combating the risk of slippage or falls, injury from splinters, short lifespan, the increasing costs of plywood and environmental costs of its disposal, EconoMatMB™ provides a safer and more economical and environmentally friendly alternative.

Made from 100% recycled low density polyethylene (LDPE), EconoMatMB™ provides considerable long term advantages over plywood. Being weatherproof, flexible, less prone to breakage or splintering and supplied with a traction surface for both personnel and vehicular movement,

At just 32kg, EconoMatMB™ is easy to handle and is easily deployed by two people.

Recommended use:

- Light duty - For use as temporary roadways, pedestrian pathways, work areas for plant and machinery, drilling rigs, depot or storage areas.

Specifications:

- Supports loads up to 20 tons*
- Connection points at each corner of the mat
- Moulds to uneven or undulating ground conditions due to its flexibility
- 4 bar tread surface for increased traction

Colours:

- Grey

Sizes:

- 2450 x 1230 mm

Accessories:

- Steel connector
- Ramps



| Art. Nr. | Description | Dimensions | Capacity (tons) | Weight |
|------------|-------------|---------------------|-----------------|--------|
| TTMSECLDGY | EconoMat® | 2450 x 1230 x 11 mm | 20 | 32 kg |

*subject to ground conditions

Heavy Duty Ground Protection Matting **TuffTrak® XT**



TuffTrak® XT

TuffTrak® XT is an extreme heavy duty road mat specifically designed for the most challenging ground conditions.

The mat features the rugged chevron traction® nub surface that ensures optimal grip in even the most adverse ground conditions. With a 600 psi* compressive load capacity, this extreme temporary ground protection solution can withstand all weather and ground conditions including wetlands, marshlands, peat bogs, and river deltas.

The TuffTrak® XT can be installed quickly and efficiently with our Four3™ camlock connector using a minimum of 2 or up to 16 connection points. The combination of the Four3™ camlock and the overlap connectors lock adjacent mats firmly together creating a monolithic working platform delivering superior strength. This semi-barrier keeps dirt and grime below the surface for a clean and secure working platform.

The special format of these connection points creates the opportunity for the positional adjustment of mats allowing various configurations.

Recommended use:

- Heavy duty - For use as roadways for heavy traffic, work areas for plant and machinery, pedestrian walkways, drilling rigs, depot or storage areas.

Specifications:

- High molecular weight polyethylene
- Usable surface area 6.84 m²
- Chevron traction® surface design
- 200 mm overlap on all sides
- 50 mats per truck / per container
- Pure compressive load capacity 600 psi*
- Available in an anti-stat version as standard

Stock sizes:

- 4000 mm x 2000 mm

Colours:

- Sand
- Black

Accessories:

- Camlock connector
- Camlock connector locking tool
- Ramps



| Art. Nr. | Description | Dimensions | Load Capacity (tons) | Weight |
|------------|-----------------------------------|---------------------|----------------------|--------|
| TTMSXTASML | TuffTrak XT® With Anti Stat Sand | 4000 x 2000 x 94 mm | 415 | 350 kg |
| TTMSXTASBL | TuffTrak XT® With Anti Stat Black | 4000 x 2000 x 94 mm | 415 | 350 kg |

*subject to ground conditions

Heavy Duty Ground Protection Matting **TuffTrak® XL**



TuffTrak® XL

TuffTrak® XL one of the largest in the TuffTrak® range, designed as an extra wide roadway, it's manufactured as a solid one piece 4092 mm long composite mat to provide superior support for loads of up to 150 tons* making TuffTrak® XL the market leader in solid composite heavy duty temporary and access solutions.



Designed with safety in mind, TuffTrak® XL incorporates a dual grip design featuring our chevron traction® surface, and a low profile surface on the reverse both incorporating micro traction™ to further increase grip. This substantially improves mud dispersal and forward motion of vehicles making the TuffTrak® XL ideal for use in the most challenging weather and ground conditions.

Recommended use:

- Heavy duty - For use as roadways for heavy traffic, work areas for plant and machinery, pedestrian walkways, drilling rigs, depot or storage areas.

Specifications:

- High molecular weight polyethylene
- Usable surface area 8m²
- Chevron traction® surface design
- Pure compressive load capacity 200 tons*
- 50 mats per truck / per container

Stock sizes:

- 4090 mm x 2030 mm

Colours:

- Black
- White

Accessories:

- Spring steel connector
- T20 bolt hex head
- Standard mild steel connector
- Corner repair kit

| Art. Nr. | Description | Dimensions | Load Capacity (tons) | Weight |
|------------|---------------------|---------------------|----------------------|--------|
| TTMSXL05BL | TuffTrak XL® Black | 4090 x 2030 x 47 mm | 200 | 360 kg |
| TTMSXL05WH | TuffTrak XL® Virgin | 4090 x 2030 x 47 mm | 200 | 360 kg |

*subject to ground conditions

Heavy Duty Ground Protection Matting

TuffTrak® ST



TuffTrak® ST

TuffTrak® ST is the ultimate standard heavy duty road mat ideal for use as temporary roadways, work areas for heavy plant and machinery, drilling rigs, depot or storage areas.

Incorporating a dual grip design featuring our chevron traction® surface, and a low profile surface on the reverse both incorporating micro traction™ to further increase grip. This substantially improves mud dispersal and forward motion of vehicles. TuffTrak® ST's low profile surface reduces the risks of slips, trips, and falls.

TuffTrak® ST has a range of connector options available for use with different ground conditions and projects, with 4 connector points at each corner allows mats to be seamlessly connected together.

Recommended use:

- Heavy duty - For use as roadways for heavy traffic, work areas for plant and machinery, pedestrian walkways, drilling rigs, depot or storage areas.

Specifications:

- High density or ultra high molecular weight polyethylene
- Usable surface area 7.5m²
- Chevron traction® surface design
- Pure compressive load capacity 150 tons*
- 80 mats per truck / per container

Stock sizes:

- 3010 mm x 2510 mm

Colours:

- Black
- Virgin sand

Accessories:

- Spring steel connector
- Steel connector



| Art. Nr. | Description | Dimensions | Load Capacity (tons) | Weight |
|------------|-------------------------|---------------------|----------------------|--------------------|
| TTMSST01BL | TuffTrak® PE1000 Black | 3000 x 2500 x 38 mm | 150 | 295 kg (650.4 lbs) |
| TTMSST05BL | TuffTrak® PE500 Black | 3000 x 2500 x 38 mm | 150 | 295 kg (650.4 lbs) |
| TTMSST03BL | TuffTrak® PE300 Black | 3000 x 2500 x 38 mm | 150 | 295 kg (650.4 lbs) |
| TTMSST01WH | TuffTrak® PE1000 Virgin | 3000 x 2500 x 38 mm | 150 | 295 kg (650.4 lbs) |

*subject to ground conditions

Outrigger Pads



Outrigger Pads

TuffTrak® outrigger crane pads are made from a mix of 100% recycled High Molecular Weight and Ultra High Molecular Weight Polyethylene making them ideal for use with cranes, hiabs and aerial work platforms. TuffTrak® outrigger crane pads provide a cushioned, stable load platform for outriggers, and prevents damage to the ground. TuffTrak® outrigger crane pads will not splinter or absorb water making them perfect for use in all weather conditions.

They are strong and durable, chemical and oil resistant, long lasting, and are easy to store and clean. Lightweight and complete with 'carry handles', our outrigger crane pads are easy to transport by hand.

The unique flexible design of our outrigger crane pads allows each pad to adapt to the ground, providing a safe working platform for heavy machinery and will return to their original shape once work is completed.

- Range of sizes
- Weight of largest size 115 kg
- Largest size load bearing capacity 100 tons*
- Carry handles
- Rugged construction provides a long service life
- Wide range of sizes to suit project and load requirements



| Art. Nr. | Description | Sizes | Load Capacity (tons) | Weight |
|------------|------------------------------|-------------------|----------------------|---------|
| TTOS40X4BL | Outrigger Pad 400 x 400 x 40 | 400 x 400 x 40 mm | 12 | 6,1 kg |
| TTOS40X5BL | Outrigger Pad 400 x 400 x 50 | 400 x 400 x 50 mm | 15 | 7,6 kg |
| TTOS50X5BL | Outrigger Pad 500 x 500 x 50 | 500 x 500 x 50 mm | 18 | 11,9 kg |
| TTOS60X6BL | Outrigger Pad 600 x 600 x 60 | 600 x 600 x 50 mm | 30 | 20,5 kg |

GeoGrid® Cellular Paving System



GeoGrid®

GeoGrid® is an erosion control cellular paving system with a load capacity of up to 400 tons* per m². Lightweight and durable, GeoGrid® is ideal for use in pedestrian areas and access routes preventing erosion and flooding in sensitive areas.

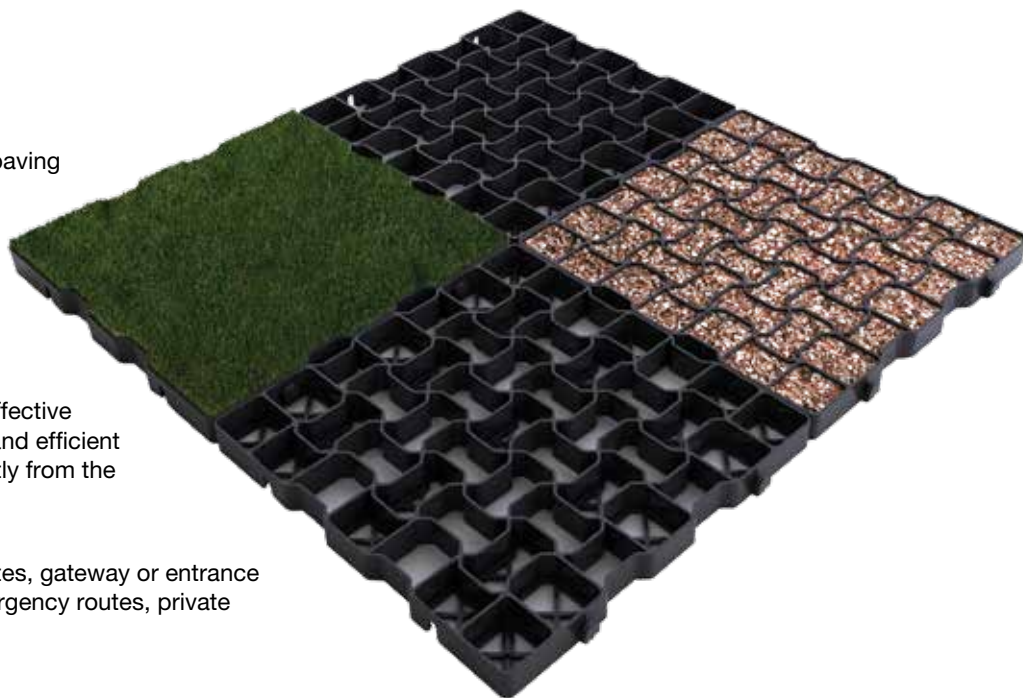
Manufactured from 100% recycled high density polyethylene and featuring an effective and simple interlocking design for fast and efficient installation, the grids can be lifted directly from the pallet as pre-connected 1m² sections.

Recommended use:

- ideal for use in car parks, access routes, gateway or entrance areas, equestrian areas, fire and emergency routes, private driveways or golf buggy routes

Specifications:

- Thickness: 40 mm
- Load bearing capacity 400 tons per m²
- 100% Recycled high density polyethylene
- Durable and lightweight
- Can be in-filled with decorative stones, or seeded with grass
- Optional white or hi-viz demarcation blocks



| Art. Nr. | Description | Dimensions | Load Capacity | Weight |
|------------|----------------------------|---------------------|---------------|--------|
| TTGSPR40BL | GeoGrid® Premium | 1000 x 1000 x 40 mm | 500 | 6.4 kg |
| TTGSST40BL | GeoGrid® Standard | 1000 x 1000 x 40 mm | 400 | 4.4 kg |
| TTGSPR40GN | GeoGrid® Premium | 1000 x 1000 x 40 mm | 500 | 6.4 kg |
| TTGSST40GN | GeoGrid® Standard | 1000 x 1000 x 40 mm | 400 | 4.4 kg |
| TTASGDEMWH | GeoGrid® Demarcation White | 90 x 60 mm | | 0,1 kg |
| TTGGEOG01B | GeoGrid® (4-pack) | 500 x 500 x 40 mm | 350 | 4.4 kg |



In 1987, Checkers™ began with a simple vision: to be a dynamic and growing organization dedicated to saving lives and protecting assets by delivering innovative industrial safety products. That vision still drives Checkers today. With our product offerings of cable/hose protection, wheel chocks, ground protection, warning whips, and vehicle/motion safety, Checkers has created a unique solution for each of our customers' unique problems. And now, being a part of Justrite Safety Group further expands this offering to customers.

Cable and Hose Protectors

- Cable Management Systems
- Hose Bridge Systems

Vehicle and Motion Safety

- Wheel Chocks
- Speed Bumps
- Parking Stops

Ground Protection and Stabilization

- Medium Duty & Heavy Duty Ground Protection Matting
- Outrigger Pads
- Cellular Paving Systems

*To learn more about our full portfolio of products, please visit **checkers-safety.eu***