

**NEW**  
edition

# Safety Products & Services



**im&m**  
Your specialist safety partner

## MARK WESTERMAN

Managing Director, IM & M



*Message from our Director, Mark Westerman*

**At IM&M, we have over 30 years' experience in specifying, supplying, servicing and repairing gas detection and safety equipment.**

We work closely with our customers and have the ability to research and define appropriate products to suit any shipping or industrial application. We also manage the worldwide logistics of supply and subsequent service and return of all items.

Through hard work and dedication we can boast some of the world's largest ship owners, ship managers and oil majors as our loyal customers.

IM&M can also provide gas detection training and technical support. We offer an unbiased and impartial approach to safety specification to suit applications with cost efficiency in mind.

This brochure gives details of our wide range of gas detection and specialist safety equipment, designed to help you comply with safety legislation and keep you safe.



# Contents

---

4	Multi Gas Detectors	24	Breathing Apparatus, Escape Sets and Respiratory Equipment
8	Single Gas Detectors	27	Fall Protection, Height Safety and Confined Space Entry Equipment
9	Calibration Stations and Software	28	ATEX Safety Lighting
12	Gas Detection Area Monitoring	33	Fans and Ventilators for Hazardous Areas
14	Fixed Gas Detection	34	Intrinsically Safe Communications Equipment
15	IM&M Meter Tracker / Rotation programme	39	Flame Detectors and Test Lamps
16	Gas Detection and Safety Training	41	Flow Meters and Flow Controllers
18	Calibration Gas and Flow Regulators	42	Thermometers
19	Gas Detection Tubes and Equipment	43	Workplace Impairment Testing
20	Temperature / Pressure and Ullage	45	Potable Water Testing Kits
21	Marine Temperature Calibrators	46	CCTV Surveillance
22	Vibration Monitoring	47	Service and Calibration
23	Dewpoint Meters, Hygrometers & Moisture Analysers		

## Client Testimonial


---

*"IM&M have provided gas detection services to our company for a number of years, managing the supply and logistics for our fleet of fifty vessels. They meet our needs at a competitive price whilst offering the highest level of service.*

*IM&M provide a personal service, as the technical authority for gas detection, I have a strong relationship with them and can always pick up the phone or send an email and achieve a swift resolution to any problem. I know that IM&M's reliability is highly valued within our procurement and supply chain management department."*

*- Oil Major*





"We strongly believe  
in the protection of  
people and the work  
environment."

# Multi-Gas Detection Meters

Ensure reliable detection of oxygen, toxic and combustible gases and vapours for a variety of applications:

- Inert gas testing
- Multi gas for confined space entry



CLICK HERE  
to view  
datasheet

## Dräger XAM 8000®

Dräger XAM 8000 is an innovative solution for the simultaneous and continuous measurement of up to 7 gases. It is ideal for a wide variety of applications where the reliable detection of oxygen, combustible gases and toxics is required.

- Suitable for clearance measurement
- Pump or diffusion mode
- Detection of combustible gases as well as toxics and oxygen
- Equipped with a powerful pump, can be connected with a hose up to 45m in length
- PID sensor available
- Sensors are guaranteed for 5 years

**Note:** this product can be configured

*Compatible with:*

*Dräger X-dock® Manager and Dräger X-dock® Calibration Station.*

**Dräger**



CLICK HERE  
to view  
datasheet

## MSA ALTAIR® 4XR

Designed for situations where entry space is confined, providing personal safety before and during entry. Measurement of oxygen, flammables, hydrogen sulphide and carbon monoxide with alarms to alert the user before the on-set of dangerous conditions.

Fitted with rapid-response MSA XCell® sensors, the ALTAIR 4XR Gas Detector is the toughest 4-gas monitor on the market, backed by a 4-year warranty. The ALTAIR 4XR can also provide real-time incident awareness to team members, supervisors, safety managers and others when paired with the MSA ALTAIR Connect app via a Bluetooth® wireless connection.

**Note:** this product can be configured

*Compatible with:*

*MSA GALAXY GX2 Automated Test Station and Safety iO Grid Fleet Manager.*





CLICK HERE  
to view  
datasheet



## Riken Keiki RX-8\_\_Series

**RX-8700:** Designed specifically for Crude Oil Tankers. It uses an IR sensor to measure hydrocarbon vapours over two ranges, 0-100% LEL and 0-100% volume. The Oxygen measurement range is 0-40% Volume using a Galvanic Sensor. Can also measure Hydrogen Sulphide (H<sub>2</sub>S), using Electro-Chemical cell, over a 0-1000 ppm range.

**RX-8500:** Designed specifically for Liquid Natural Gas (LNG) carriers. Has IR sensors for Methane (CH<sub>4</sub>) 0-100% LEL and 0-100% volume (Auto ranging). Carbon Dioxide (CO<sub>2</sub>) 0-20% Volume as well as an Electro-Chemical sensor for Carbon Monoxide (CO) 0-1000ppm. A Galvanic Sensor for Oxygen with a 0-40% volume range is also included.

**RX-8000:** A simple version of the above is also available.

**Note: this product can be configured**



CLICK HERE  
to view  
datasheet



## Riken Keiki GX 8000

- Real time detection for up to 5 ranges: Combustibles 100% Vol, 100% LEL, O<sub>2</sub>, H<sub>2</sub>S & CO
- Large simultaneous display with auto back lighting
- Strong sample drawing capability
- ATEX Exia II CT4 approved
- Water and dust resistant to IP67
- Data logging provided as standard

**Note: this product can be configured - 5 versions available, A-E**



CLICK HERE  
to view  
datasheet



## MSA ALTAIR® 5X

The MSA ALTAIR 5X is a gas detector that is designed specifically for sampling and monitoring confined spaces, before and during entry. The MSA ALTAIR 5X Gas Detector can measure up to 6 different gases simultaneously and is now available with integrated PID sensor for VOC detection. Driven by advanced MSAXCell® Sensor Technology, the ALTAIR 5X Gas Detector delivers faster response time, better stability, accuracy, longer service life and cost savings over the life of the instrument. The instrument is backed by a 4 year warranty.

**Note: this product can be configured**

*Compatible with:*

*MSA GALAXY GX2 Automated Test Station and Safety iO Grid Fleet Manager.*



CLICK HERE  
to view  
datasheet



## MSA ALTAIR 2X

The ALTAIR 2X Gas Detector is the first 1 or 2 gas detector that incorporates industry leading XCell sensor technology, to deliver unparalleled performance, whilst drastically minimising total cost of ownership, increasing durability and delivering enhanced worker safety, compliance, and traceability.

The ALTAIR 2XP Detector delivers the world's first standalone bump test, allowing a daily bump test to be performed without the need for calibration accessories or specific calibration gas.

*Safety iO Compatible*

*Models available include:*

*ALTAIR 2XP, ALTAIR 2XT (two tox Gas Detector) and ALTAIR 2X (Single Gas Detector).*



CLICK HERE  
to view  
datasheet

**Honeywell**  
AUTHORIZED DISTRIBUTOR

## Honeywell BW™ Flex

Whether you are protecting workers or first responders in industries from steel and wastewater to paper and pulp, the Honeywell BW™ Flex delivers the flexibility you need. Choose from more than 15 sensors to simultaneously detect up to 4 gas hazards. Real time gas readings at a glance, simultaneous monitoring of up to 5 gas hazards, intelligent sensors for increased safety and uptime.

**Note: this product can be configured**

*IntelliDox Docking Station and Honeywell Safety Suite are suitable for this product.*



CLICK HERE  
to view  
datasheet

**Honeywell**  
AUTHORIZED DISTRIBUTOR

## Honeywell BW™ Icon

The first multi gas detector with an icon display - for fast decisions. Honeywell BW™ Icon is named for its display of simple icons for gas levels and device status. That means no live gas readings for workers to interpret and no time-consuming training. Instead, when there's a gas alarm, the bell icon on the screen on the display will illuminate, along with an indicator next to the sensor in alarm, so workers can quickly clear the area.

**Note: this product can be configured**

*Intellidox docking station and Honeywell Safety Suite are suitable for this product.*

CLICK HERE  
to view  
datasheet



**Honeywell**  
AUTHORIZED DISTRIBUTOR

### Honeywell BW™ Micro Clip Series

The BW Micro Clip Series is the world's most popular multi-gas portable detector, delivering long run time and reliability plus small size, low cost and an easy user experience.

- Simultaneously monitor up to 4 gases including O2, H2S, CO and combustibles
- Battery run time of 18 hours in normal temperatures
- IP68 rating for unmatched water protection.

**Note: this product can be configured**

*IntelliDox Docking Station and Honeywell Safety Suite are suitable for this product.*

CLICK HERE  
to view  
datasheet



**Dräger**

### Dräger Xam-2500®

These 1 to 4 gas detectors reliably detect combustible gases and vapours, as well as O2, CO, H2S, NO2 and SO2. Reliable, measuring technology, durable sensors and easy handling, ensure a high degree of safety with low operating costs.

- Ex approval for zone 0
- Diffusion or pump mode
- Durable electrochemical sensors
- Poison resistant Ex sensor
- Ergonomic and robust
- Sensors are guaranteed for 5 years

*Compatible with:*

*Dräger X-dock® Manager and Dräger X-dock® Calibration Station.*





# Single Gas Detectors

## Honeywell BW™ Solo

Easy to use, single gas detector with Bluetooth connectivity, that provides real-time visibility into the safety of hazardous area workers. High standards of sensor quality and reliability, 1 series sensor for CO, H2S and O2, has an extensive selection of sensor options.

*IntelliDox Docking Station and Honeywell Safety Suite are suitable for this product.*

[CLICK HERE  
to view  
datasheet](#)



## Toxirae Pro

Reliably and accurately monitors a full range of common toxic gases, volatile organic compounds, combustible gases and carbon dioxide.



[CLICK HERE  
to view  
datasheet](#)

## MSA ALTAIR® Single Gas Detector

Designed for superior lifespan, sensors operate for over 2 years, the ALTAIR Single-Gas Detector is the smart choice for market leading, cost-effective gas monitors. Can include sensor options for carbon monoxide, hydrogen sulphide, and oxygen with an LED/audible / vibrating alarms. Superior dust / water protection high RFI resistance, and one-button operation provides heightened safety, plus increased durability and ease of use.



[CLICK HERE  
to view  
datasheet](#)

## Dräger Pac 6000®

The disposable personal single-gas detection device, Dräger Pac 6000®, measures CO, H2S, SO2, NO2 or O2 reliably and precisely, even in the toughest conditions. The robust design, quick sensor response times and a powerful battery ensure maximum safety for up to two years with virtually no maintenance required. Ideal for personal air monitoring.



[CLICK HERE  
to view  
datasheet](#)

## Riken 04 Series Single Gas Toxic Monitors

The 04 Series is able to monitor one of, oxygen, carbon monoxide, hydrogen sulphide, hydrogen cyanide, nitrogen dioxide, phosphine, sulphur dioxide, ammonia or chlorine.

A dual gas version simultaneously monitors for both oxygen and carbon monoxide with a combo sensor, the 04 series is available with a hydrogen compensated carbon monoxide sensor. The units carry a 3 year warranty which includes all sensor types including O2 sensors.



[CLICK HERE  
to view  
datasheet](#)

# Calibration Stations and Software

---



## MSA GALAXY® GX2 Automated Test Station

MSA GALAXY GX2 provides automated calibration of MSA ALTAIR Gas Detector fleet. The GALAXY GX2 Automated Test System provides simple, intelligent testing and calibration of MSA ALTAIR 4XR, MSA ALTAIR 5X / 5X PID / 5X IR and ALTAIR io360, multi gas detectors.

Compatible with MSA Safety IO, transform your detection programme from a headache into an empowering safety platform. Combine MSA detectors, test equipment and support with insights from web-based Safety IO Grid Services. Contact us for further information.

---

### MSA Safety IO Grid Fleet Manager

Grid Fleet Manager is a web-based service to streamline your gas detection fleet management. It helps you regain control of your detection program so you can shift your focus to broader safety goals.

Assess, address and share your MSA fleet status all from your browser.

- Secure web based set up and access
- IT-free maintenance
- Incident and compliance awareness and reports
- Detector and test equipment management
- Works with MSA Detectors and Galaxy GX2 Test Banks



### MSA Grid Live Monitor

Share's hazard and compliance concerns with you and your team in real time so you can take action when seconds count.

- Comprehensive field manager, device assignment
- Real time location awareness
- Satellite and street view map options
- Real time alarm alerts about gas readings and other hazards, compliance alerts
- Associated worker phone number
- Individual or group evacuation control
- Exclusively for your ALTAIR 4XR, 5X and io360 detectors



**Honeywell**  
AUTHORIZED DISTRIBUTOR

## Honeywell IntelliDox

The IntelliDox system combines smart docking modules and device management software to provide automated instrument management for Honeywell BW™ Solo, Honeywell BW™ Ultra, BW™ MaxXTII, BW™ Clip Series, Honeywell BW™ Clip4 and Honeywell BW™ MicroClip Series gas detectors - helping you drive productivity, reliability and efficiency.

- Enables bump test tracking, email notices and easy recordkeeping for improved compliance
- Performs the quickest bump test in the industry for increased uptime and no wasted calibration gas
- Enables the ability to change alarm set points, set a noncompliance indicator when a bump test is due, and adjust other parameters for maximum flexibility

## Honeywell MicroDock II Dock Calibration System

The most cost-effective way to manage the calibration and bump testing of Honeywell Analytics portable gas detectors.

- Quick and easy compliance - automatically maintain accurate records
- Automatic bump testing, calibration, record keeping and charging
- One base station with one AC outlet supports up to six modules to suit your application
- Verifies proper performance of detectors
- Reduces maintenance costs
- Device management with Honeywell Safety Suite

## Honeywell Safety Suite

The software solution for the management of your Honeywell gas detector fleet.

- Allowing you to spend less time on administering your portable detector fleet
- Honeywell Safety Suite enables you to manage Honeywell portable gas detectors and docks with ease, including RAE and BW together for the first time
- It's highly intuitive and user-friendly interface enables you to pull all the necessary data in an intelligent, effective and time saving way
- Data is encrypted, minimizing privacy threats



**CLICK HERE**  
to view  
datasheet

## Dräger X-dock® Calibration Station and Fleet Management

Dräger X-dock test and calibration stations for mobile gas detectors can help ensure that devices are ready and safe to use.

Worksite efficiency can be improved with the use of new software that allows centralised fleet management efforts.

Provides you with full control of your portable Dräger gas detection instruments. Automatic bump tests and calibrations with reduced test gas consumption and short testing times save time and money.

- As versatile as your requirements, the X-dock 5300 includes a master station including a module for a gas detection instrument from the X-am and Pac family. The X-dock 6300 and 6600 versions can be configured freely
- Easier to use than ever before
- More safety thanks to complete documentation



### Dräger X-dock® Manager

The Dräger X-dock® Manager keeps you informed about whether your existing Dräger gas detection devices are ready for use. It will also notify you when it is time for regular maintenance and keeps track of all testing, including results. It has never been easier to record and analyse statistical data, with the asset management software, you can be sure your fleet of devices is ready for optimal use!



# Gas Detection Area Monitoring

## MSA ALTAIR® io360 Gas Detector

### The future of area monitoring

The ALTAIR io360 Gas Detector offers 4 gas detection for high-risk areas including confined spaces, perimeter, and general area monitoring. The Altair io360 combines the simple set-up of a smart home device, while allowing local or remote monitoring of hazardous areas. The ultra-long battery life keeps the focus on safety and less on maintenance. The ALTAIR io360 delivers IP68 ruggedness and best in class, X-Cell sensors, the performance expected from MSA.



- Four-gas detection with a catalytic bead sensor
- Compact, portable design
- Ultra-long battery life with 50-60 days of 4-gas runtime (80 or more days as toxic & O2)
- Easy set-up, similar to a smart home product
- Factory pre-configured networks that are ready-to-go out of the box
- Android or iOS Safety io Grid mobile app makes setup and configurations simple
- Connect up to 32 ALTAIR io360 Gas Detectors with MSA HUB to form mesh network, share alarms, and extend range
- MSA HUB connects with Safety io Grid via Wi-Fi or ethernet connectivity
- Integrated D-ring and 50lb (22kg) magnet provides placement options
- IP68 toughness that can withstand submersion, sprays, and weather
- 10ft (3m) drop tested

### *Compatible with:*

*MSA GALAXY GX2 Automated Test Station and Safety iO Grid Fleet Manager*

[CLICK HERE](#)  
to view  
datasheet





### Dräger X-Zone® 5800

CLICK HERE  
to view  
datasheet

State of the art area monitoring, the Dräger X-zone® 5800 in combination with the Dräger X-am 5000, 5100, or 5600 gas detection instruments can be used for the measurement of up to 6 gases and extends the portable gas detection technology to a comprehensive system with many applications. The internal pump and continuous power supply in the explosive area of zone 0 extend the range of applications in mobile gas detection technology.

Innovative area monitoring, a patented combination for increased safety – in addition to the personal area monitors carried on the body, these area monitors are positioned where gas hazards are expected. The Dräger X-zone® 5800 transforms the Dräger personal gas detection instruments X-am 5000, 5100 and 5600 into innovative area monitoring devices for a wide range of applications.

- Clear warning - the illuminated green LED indicates that the air is free of toxic combustible gases, the LED colour changes from green to red providing a clear, visual warning that gas is present. This is accompanied by a loud, highly audible evacuation alarm
- Wireless fence line – Up to 25 units can be automatically interconnected to form a wireless fence line, this allows for rapid establishment of safety networks for larger areas
- Continuous operation for up to 120 hours, the Power Supply Ex is available for continuous use of the X-zone 5800. It offers a 50m supply from safe area to a potentially explosive area and is even approved for use with the X-zone 5800 in Zone 0
- Pump or diffusion mode – suitable for your respective application
- Approval for Ex-Zone 0
- Inductive charging station, easy and convenient, non-contact charging

**Dräger**

**Individually configurable with the Dräger CC-Vision PC software (e.g alarm frequency)**

### Honeywell BW™ RigRat

Honeywell BW™ RigRat brings a new level of user-friendliness to transportable multi-gas area monitoring, so you can work with confidence in hazardous areas. Simply place the monitor nearby, and it will alert workers to area gas threats so they can take action. Like other Honeywell BW™ products, Honeywell BW™ RigRat is engineered for ease, with one-button operation. Simply turn it on and it's ready to deploy - no expertise required. Convenient handles and a carrying strap make it easy to take with you.

Unlike some transportable area monitors, Honeywell BW™ RigRat is fully self-contained - with no need to repurpose your personal gas detectors for an area monitoring application. Instead, continue using your personal detectors to monitor workers' breathing zone, while using Honeywell BW™ RigRat to monitor an area.

*Compatible with:*  
Honeywell™ Touch Point Plus

CLICK HERE  
to view  
datasheet



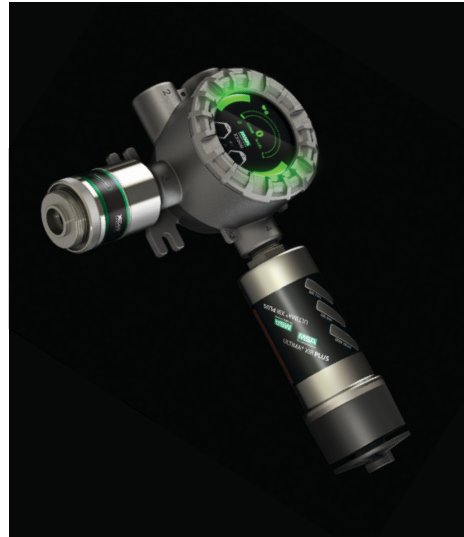
# Fixed Gas Detection

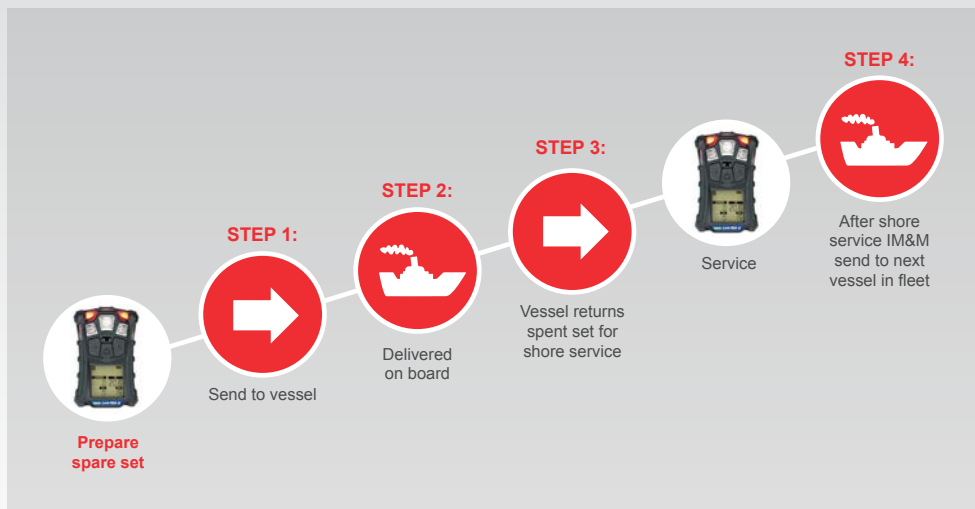
Ensure safety in all working environments with the use of fixed gas detection systems, detectors, monitors and alarms.

The release of toxic gases, oxygen deficiency or enrichment as well as the presence of flammable gases and vapours can be monitored with a range of fixed gas detectors. When detected at an early stage, alarms and shut down procedures can be implemented to protect both personnel and plant equipment.

With this in mind, IM&M are working with MSA, Dräger and Honeywell to supply its clients with a complete range of fixed gas detection systems. We can provide site surveys, advice and recommend tailored gas detection solutions in all industries and applications. We offer a complete service from quotation, through to installation, commissioning and ongoing after sales service and support.

IM&M Ltd aim to fully understand our client's individual safety requirements, in order to provide the correct specialist services. We can service, calibrate, maintain and supply accessories and replacement sensors.





## IM&M Meter Tracker / Rotation

Easy, low cost, secure, hassle free, portable gas detection 'Meter Tracking' management system to and from your entire fleet - an all-inclusive support management program by IM&M Ltd. Meter Tracker is 100% pro-active. A secure online facility allows both shipping and ship management operatives, Superintendents, Masters and Chief Engineers to monitor vessel requirements. See at a glance what gas detection and other safety equipment are onboard, when it was issued, and more importantly when it is next due shore service and calibration or replenishment.

**Established for over 30 years, IM&M's proven 'Meter Tracking' system provides:**

- Proactive supply and maintenance of gas detection equipment across multiple fleet requirements
- Significant cost savings across all departments
- High quality easy to use gas monitors or use existing
- Access to valuable inspection data to comply with vessel inspection protocol
- Dedicated customer contract log in 'Web Access'
- Damaged meters replaced and serviced or exchanged under manufacturers warranty
- Maritime legislation compliant
- A variety of brands, equipment and accessories to one point of contact for calibration
- Reduced invoices, administration and more economies of scale through one global point of contact
- Reduced inventory of gas monitors, consumable equipment and management spares
- Your gas detection assets are full managed with tractability and precision identification
- Managed calibration certificates and ease of access prior to vessel inspections
- 24 hour / 365 day technical advice on any / all aspects of portable gas detection
- Training and simplified instructions available



# Gas Detection Training

IM&M has developed a series of computer-based training modules, available to purchase on a USB stick or CD. Each contain a number of different learning topics including components and assembly, general operation, calibration and assessment.

The benefits can include enhanced understanding and operation of gas detection instruments, a cost-effective method for delivering gas detection training and all modules can be delivered at a pace to suit everyone.

Our expert team at IM&M can discuss your individual company training requirements and can offer bespoke onsite or virtual training with your staff team, for the majority of applications and gas detectors on the market. We can also offer 24/7 support and provide 'simplified instruction' booklets, providing an easy go to reference guide which users can refer to whenever using the gas detectors.

## Training is available for the following instruments:

- Riken Keiki RX 8000
- Riken Keiki RX 8700
- Riken Keiki RX 8500
- Riken Keiki GX 2009
- Dräger XAM 7000
- Dräger XAM 8000
- Impact Pro
- Honeywell BW Gas Alert Micro Clip
- Honeywell BW Gas Alert Micro Clip Extreme
- MSA Altair 4 / 4X / 4XR
- MSA Altair 5X



---

## Safety Training from our Channel Partners

### MSA

As a leading channel partner of MSA, MSA can offer virtual led training courses (VLT), via Webex video conferencing platform with an MSA trained Instructor. A real time learning experience as if you were participating in person, subjects can include fall protection, confined space or customized training. MSA can also offer free 'how it works' – online training for MSA products and equipment.

**Please contact us to discuss your requirements: [sales@im-m.co.uk](mailto:sales@im-m.co.uk)**

### Dräger

As channel partner of Dräger, we can offer access to the Dräger safety technical training academy, which can equip you with the expert knowledge needed to efficiently maintain and operate Dräger equipment and confidently work in hazardous areas with minimized risks. Over 500 training courses are held for over 1000 participants each year throughout the UK at one of 3 regional training centres. Training courses cover breathing apparatus, gas detection, impairment and confined space.

**Please contact us to discuss your requirements: [sales@im-m.co.uk](mailto:sales@im-m.co.uk)**



IM&M are able to offer a full range of calibration gas cylinders for testing portable gas detectors and fixed gas detection systems, in a wide range of gas mixtures and cylinder sizes, including, 1 litre, 12 litre, 34 litre, 58 litre, 60 litre, 110 litre, 10 litre water capacity and many more.



**Additional mixes and variants are available, contact us to discuss your requirements.**

Gas is certified and traceable to national standards and can be delivered anywhere in the world through our dedicated despatch facility, by our IATA qualified staff team.

#### Gases include:

- Standard Options:
  - 4 Gas Mixture (Quad Gas) - 20.9% O<sub>2</sub> Oxygen, 25ppm H<sub>2</sub>S Hydrogen Sulphide, 100ppm CO Carbon Monoxide, 50% LEL 2.2% CH<sub>4</sub> Methane
  - 4 Gas Mixture (Quad Gas) - 18% O<sub>2</sub> Oxygen, 10ppm H<sub>2</sub>S Hydrogen Sulphide, 50ppm CO Carbon Monoxide, 50% LEL 2.5% CH<sub>4</sub> Methane
- Hydrogen Sulphide ( H<sub>2</sub>S )
- Carbon Monoxide ( CO )
- Methane ( CH<sub>4</sub> )
- Isobutane ( C<sub>4</sub>H<sub>10</sub> )
- Nitrogen ( N<sub>2</sub> )
- Oxygen ( O<sub>2</sub> )
- Carbon Dioxide ( CO<sub>2</sub> )
- Sulphur Dioxide ( SO<sub>2</sub> )
- Hydrogen Chloride ( HCl )
- Butadiene ( C<sub>4</sub>H<sub>6</sub> )
- Hydrogen Cyanide ( HCN )
- Isobutylene ( C<sub>4</sub>H<sub>8</sub> )
- Ammonia
- Nitric Oxide ( NO )
- Propane ( C<sub>3</sub>H<sub>8</sub> )
- Helium ( He )

#### Flow Regulators

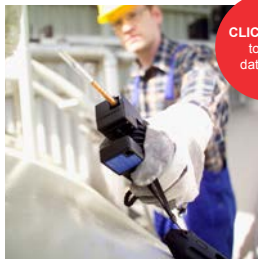
IM&M can supply a range of flow regulators to fit all cylinder types:

- Fixed flow
- Variable flow
- Trigger / push flow
- Demand flow
- Sizes include 0.3 LPM, 0.5 LPM and 1 Litre
- Gas sampling bags also available



# Gas Detection Tubes & Equipment

The ideal solution for measuring many different substances. IM&M has more than 200 different tubes available to accurately measure over 500 gases and vapours.



[CLICK HERE  
to view  
datasheet](#)

## Dräger Accuro® Pump

The Dräger Accuro is a bellows pump, which draws the air sample through the Dräger tube using strokes. The body of the pump consists of a bellows, which is completely pushed together for the measurement. When the bellows is released, the air is drawn automatically, and the gas sample is sucked through the tube to be measured.

**30m sample hose now available**

**Dräger**

## Gastech Gas Sampling Pumps

Using just one Gastech precision sampling pump and your choosing of up to 500 tube types, you can sample any gas from Acetaldehyde to Xylene. Single stroke operation, quick and simple handle release. Can be used in conjunction with Gastech Detector Tubes to draw a sample of hazardous gas across the chemical reagent within the tube such that a change produced in proportional in length to the concentration.



[CLICK HERE  
to view  
datasheet](#)

**There are 2 piston style pumps available:**

- GV-100S
- GV-110S (features automatic sampling counter which indicates how many pump strokes have been completed)

**30m sample hose now available**

## Dräger X-act® 5000 Basic

The Dräger X-act 5000 Basic introduces a new era of gas measurement. Only one device is necessary for measuring and sampling. The automatic tube pump is compatible with Dräger short-term tubes as well as sampling tubes and systems. The internal pump is also designed to use extension hoses up to 30 metres in length.



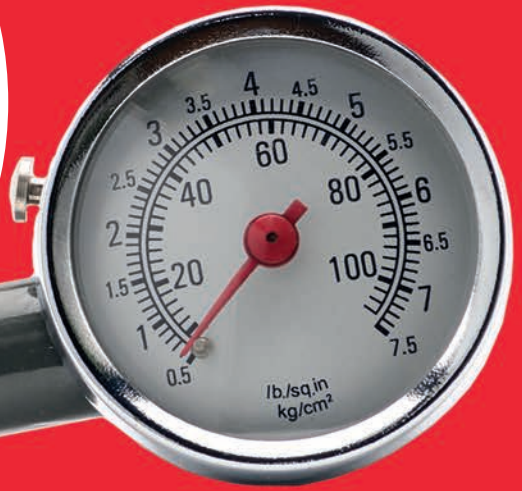
[CLICK HERE  
to view  
datasheet](#)

**30m sample hose now available**

**Dräger**



IM&M Ltd can provide advice on the most appropriate tank measuring system for your application, with a choice of leading brands such as Tanktech, MMC or Honeywell.



## Temperature / Pressure & Ullage

We also offer a competitively priced, comprehensive service on a wide range of ullage temperature and interface detectors (UTI's) and sampling devices in our fully equipped laboratory, where all measurements are traceable to national standards.

**IM&M can offer calibration on the following:**

- Temperature calibrators
- Ullage temperature interface (UTI)
- Thermometers
- Infrared temperature measurement
- Pressure calibrators
- Pressure gauges

# Marine Temperature Calibrators



CLICK HERE  
to view  
datasheet

The TM Series of Portable Temperature calibrators are fast and cost-effective calibrators, designed specifically for the marine industry. The T650M-MK2 and T375M-MK2 marine temperature calibrators hold a DNV marine type approval to full-fill the IMO requirements.

Maximize accuracy, with a 1-year recommended calibration interval, or lower the cost of ownership of your temperature calibrator by extending the interval to 2 years! Reduce costs associated by recalibration and the logistics of landing the product onshore.

The TM series is available in 3 models to cover a temperature range from  $-24$  to  $650^{\circ}\text{C}$ . The new block technology allows for fast heating/cooling whilst maintaining high accuracy and stability. The rugged construction and the light weight make it the ideal tool for carrying on-board.

The TM series of Dry Block Temperature calibrators have RS232 serial interface as standard and are compatible with the EIUK software cal package.

The TM Marine Temperature Calibrators also features an intuitive easy-to-use interface, and advanced functions like automatic switch test and auto ramp.



Preventing machinery failure and avoiding costly downtime is a priority for all maintenance teams. Vibration monitors can reliably check the condition of rotating equipment and detect signs of wear and damage.



[CLICK HERE](#)  
to view  
datasheet

## Fluke 805

More than just a vibration pen, this full vibration meter is designed to give maintenance professionals detailed, high accuracy measurements of vibration to determine the status of items such as chillers, fans, cooling tower drives, centrifugal pumps, positive displacement pumps, air compressors, blowers, gearboxes, machine tools and many other types of machinery. Ideal for mechanical troubleshooting teams that need repeatable, severity-scaled readings of overall vibration and bearing condition.



[CLICK HERE](#)  
to view  
datasheet

## Fluke 805 FC

Version available includes Fluke Connect with ShareLive™ is the only wireless measurement system that lets you stay in contact with your entire team without leaving the field.

*As long as you are within your providers wireless service area.*



[CLICK HERE](#)  
to view  
datasheet

## TPI 9080-EX Intrinsic Safe Vibration Meter

Intrinsically safe, easy to use vibration analyser and smart trend meter that records, analyses and displays vibration signals at the push of a button.

Identify the vibration problem: unbalance, misalignment, or looseness; in addition to the bearing condition.

VibTrend standard software gives greater ease of use and flexibility.



# Dewpoint Meters, Hygrometers & Moisture Analysers

---

LNG & LPG carriers require very dry inert gas for several reasons, including preventing a fire, preventing a chemical reaction, or maintaining cargo quality. IM&M can supply new, refurbished & service.

**Typical applications for LNG and LPG carriers include:**

- **Cold Testing** - Prior to any cold testing taking place the dewpoint in a cargo piping system, cargo tanks and insulation spaces should be reduced to a level below that at which condensation is likely to occur.
  - **Purging** - A N<sub>2</sub> purge of cargo tank insulation spaces is carried out to reduce both the O<sub>2</sub> content and dewpoint in those spaces. The duration and details of this operation are dependent on the type of cargo containment system but typically the O<sub>2</sub> content in the N<sub>2</sub> purged spaces will be reduced to 3% by volume and the dewpoint will be reduced to at least -40°C dewpoint.
  - **Dry air**, produced by the inert gas plant, is used to blow through the cargo piping system and to purge the cargo tanks of humid air, reducing the dew point to -20°C dewpoint or below.
- 



## Portable Dewpoint Meter - SHAW SADP

Self-contained, robust, reliable, portable dewpoint meter and certified intrinsically safe to ATEX and IECEx standards.

- Guaranteed accuracy  $\pm 3^{\circ}\text{C}$  to  $\pm 4^{\circ}\text{C}$  ( $\pm 5.4^{\circ}\text{F}$  to  $\pm 7.2^{\circ}\text{F}$ )
  - Analogue display -  $^{\circ}\text{C}$ ,  $^{\circ}\text{F}$  and ppm(v)
  - AutoCal feature
  - Desiccant dry-down for instantaneous readings
  - Over 50 hours continuous operation
- 



## Portable Dewpoint Meter - SHAW SDHmini-Ex

Incorporates signal conditioning circuitry, memory management and full colour graphics LCD.

- Certified intrinsically safe to ATEX, IECEx
  - AutoCal and desiccant dry down assembly
  - Bluetooth connection / printing
  - Rechargeable battery - over 150 hours of continuous operation on full charge
  - 10 language options
  - Calibration certificate traceable to NPL/NIST
-

# Breathing Apparatus, Escape Sets and Respiratory Equipment

A full range of breathing apparatus and escape sets are available from simple breathing apparatus to functional airline and escape sets. Equipment provides the wearer with protection when escaping from contaminated or oxygen deficient, life threatening environments. Equipment available from IM&M includes:

- Respiratory masks
- Respiratory filters
- Powered air purifying respirators (PAPR)
- Self-contained breathing apparatus (SCBA)
- Airline and compressed air systems
- Rescue and escape equipment



## Face Masks and Filters

Industrial environments sometimes mean contaminated air, which can lead to health risks to workers, PPE masks fit comfortably and can offer reliable protection against all types of vapours, dust and particles. We can provide optimal filters for each PPE face mask and application, to ensure you always breath safely. IM&M can recommend the best brand for your application, example of the products we can offer include:

- Full face masks and respirators
- Half face masks
- Disposable face masks



CLICK HERE  
to view  
datasheet

### Dräger X-plore® 4700

This robust half face mask offers excellent comfort and outstanding leak tightness for demanding applications. Thanks to the wide range of filters available for protection against gases, vapours and particles, ideally suited for use in a variety of industries.

- First class wearing comfort
- Selection between two high quality materials
- Drop down system
- Optional with elastic harness
- Extremely robust
- Two filter connection types



CLICK HERE  
to view  
datasheet



### Dräger FPS® 7000

The Dräger FPS 7000 full-face mask series sets new standards in terms of safety and wearing comfort.

Thanks to its enhanced ergonomics and the availability of multiple sizes, it offers a large, optimized field of vision and a very comfortable, secure fit.

CLICK HERE  
to view  
datasheet



### MSA Advantage® 3100 Full Face Piece Respirator

The full-face mask series Advantage 3000 provides both protection and unparalleled comfort.

The soft sealing line made up of hypoallergenic silicone provides a pressure free fit. The large optically corrected lens ensures a clear, undistorted view, while the grey-blue colour gives the mask an aesthetic appearance. The patented Advantage head harness gives a perfect face piece-to-face fit.

CLICK HERE  
to view  
datasheet



### MSA M1 System SCBA

The M1 SCBA is fully customizable and can be configured to meet a broad range of needs. Buy per your budget needs and upgrade later.

Overall, the M1 breathing apparatus represents the most advanced, ergonomic and modular SCBA system on the market which was designed and developed side-by-side with firefighters. This all-new breathing apparatus platform includes several innovative and customizable features that help to enhance hygiene and improve comfort.

### Dräger Saver CF

The Dräger Saver CF constant flow emergency escape breathing apparatus allows safe, effective and uncomplicated escape from hazardous environments. Simple to put on and featuring automatic operation, this hood based, constant flow breathing device can be used with minimal training.

- Up to 15 minutes of life saving air
- Highly visible, even under adverse conditions
- Low maintenance protection
- Available in durations of 10 or 15 minutes

CLICK HERE  
to view  
datasheet



**Dräger**

### 3M™ Scott™ ELSA Emergency Life Support Apparatus

Intended for rapid escape from hazardous industrial and marine environments, the 3M™ Scott™ ELSA (Emergency Life Support Apparatus) is designed to be reliable, robust, quick and simple to operate, ensuring maximum protection in escape situations.

- Breathing apparatus provides a constant supply of air for quick escape from hazardous industrial and marine environments
- Automatic quick-fire activation triggered by opening the carrying bag
- Cubic hood design with large visor area and orinoasal mask for reduced carbon dioxide dead space
- Designed for reliability, robustness and ease of use for maximum protection in an escape situation
- Available in durations of 10 or 15 minutes



[CLICK HERE](#)  
to view  
datasheet



# Fall Protection / Height Safety and Confined Space Entry Equipment

If you are seeking support with height safety, rescue, lifting or confined space working, IM&M can supply most protection applications including:

- Tripods
- Winches
- Harnesses
- Karabiners
- Lanyards (including self-retracting)
- Lifting slings
- Kits
- Fall arrest blocks
- Connectors
- Work positioning
- Ropes and grabs
- Engineered / bespoke fall protection products

We represent 3 major brands at the forefront of fall protection, covering industries/applications such as: confined space entry and rescue, construction, energy, transport, telecoms, elevators, infrastructure, and overhead cranes.

**Contact us to discuss your requirements.**



# ATEX Safety Lighting

The supply of ATEX certified industrial lighting units are extremely important elements of working safely. IM&M is an approved distributor of Wolf Lighting, we are able to offer a range of products that are suitable for those working in explosive or hazardous environments.

## Intrinsically Safe Portable Lighting

Explosion proof lights are required in the oil and gas, refining and petrochemical industries, food processing, pharmaceuticals, breweries and distilleries, as well as firefighting, water treatment and gas distribution. IM&M can supply a range of intrinsically safe handlamps, torches, head torches and warning lights. The lights we offer includes the widest range of ATEX and IECEx certified portable hazardous area lighting for safe use in potentially explosive atmospheres. The range includes explosion protected handheld straight and right-angled torches, head torches and hand lamps, details as follows:



[CLICK HERE](#)  
to view  
datasheet

### WOLFLITE® XT Rechargeable LED Handlamp



The WolfLite® XT Rechargeable Handlamp exploits advanced technology to deliver excellent performance, robustness, reliability and versatility in the harshest environments and is CE marked to the ATEX directive and IECEx certified, for safe use in Zones 1 and 2 potentially explosive gas and Zones 21 and 22 dust atmospheres.

**A Zone 0 and 20 version is available.**



[CLICK HERE](#)  
to view  
datasheet

### ATEX HT-500 Rechargeable Headtorch

The HT-500 Petzl Duo Z1 is a powerful, Zone 1 Rechargeable multi-beam Headtorch for use in Hazardous Areas, featuring four lighting modes and a maximum output of 360 lumens on BOOST mode.

- FACE2FACE anti-glare feature, allows users to face one another without blinding
- Robust, reliable and proven materials
- Ergonomic design
- Compact and lightweight
- Large tactile switch (easy to use even when wearing gloves)
- Highly robust
- Helmet ready with mounting plates included for VERTEX and STRATO helmets



### ATEX Torch

The ATEX Safety Torch is a reliable, simple and cost-effective portable light and is available with a straight or right-angle body style and Vacuum or Xenon bulbs and is CE marked to the ATEX directive and IECEx certified for safe use in Zones 1 and 2 potentially explosive gas, vapour and mist atmosphere, where a T6 or T4 class permits, and Zones 21 and 22 dust atmospheres, with certified maximum surface temperatures of 65°C or 95°C.



### Markerlite

The Wolf Markerlite is a self-contained, high visibility led indicator which is CE marked to the ATEX directive and IECEx certified for safe use in potentially explosive zone 1 (IIC/T4) gas and zone 21 (IIIB/200°C) dust atmospheres.

In dark and reduced visibility environments, the Markerlite can be used in many hazardous area applications to clearly highlight the position of personnel or hazards, ranging from personal identification on protective headwear, clothing and site bicycles to escape route, exit and equipment marking.

## Intrinsically Safe Temporary Lighting

As a distributor of Wolf Safety, IM&M can offer the widest range of ATEX and IECEx certified temporary hazardous area lighting for safe use in potentially explosion protected mains and low voltage temporary fluorescent and LED luminaires and floodlights tank lighting kit, battery operated LED work lights and compressed air operated pneumatic lamps.



### ATEX/IECEx LED Mini Worklite™ WL-50

The ATEX and IECEx certified WL-50 and WL-50HT light weight mini worklite is an easily carried, rechargeable, high output LED floodlight for use in harsh, remote, hazardous area applications.

- Weighs just under over 9kg
- Safe use in Zones 1, 2, 21 and 22 potentially explosive gas, vapour, mist and dust atmospheres, where a T4 temperature class permits
- Light output up to 3,100 lumens, duration up to 10 hours
- The lens is impact resistant, 6mm toughened glass



---

### ATEX/IECEx LED Worklite™



CLICK HERE  
to view  
datasheet

The ATEX & IECEx certified Worklite™ is a rechargeable, high output LED floodlight for use in harsh, remote applications for extended periods. It offers unique levels of light output, operational duration and robustness in a self-contained battery powered lamp. It is CE marked to the ATEX Directive for safe use in Zones 1, 2, 21 and 22 potentially explosive gas, vapour, mist and dust atmospheres, where a T4 temperature class permits.

Two ATEX Worklite™ models are available: the WL-85, which has an 18 LED lamp head giving over 3100 lumens output at source, and the WL-80 which also has an 18 LED lamp head giving 3100 lumens of light output but comes with a smaller, lighter battery to make it easily portable. Both models deliver a piercing spot beam and a flood of lower-level fringe light. Low maintenance is assured by the LED light source which is designed to give over 100,000 hours life.

The duration of the WL-85 is up to 21 hours on 'high power' and up to 40 hours on 'low power' and the WL-80 is up to 15 hours on 'high power' and up to 22 hours on 'low power'.

---

### ATEX Zone 0 Flood Banks



CLICK HERE  
to view  
datasheet

The ATEX Zone 0 Flood Bank exploits the excellent performance and reliability of the Wolfite XT Rechargeable Zone 0 Handlamps to deliver collectively a flood of outstanding illumination, of up to 2,100 lumens, to a Zone 0 hazardous task area. The Flood Bank Stand incorporates the Wolfite XT Rechargeable Zone 0 Handlamps (XT-75) which are CE marked to the ATEX Directive and IECEx Certified, for safe use in Zone 0 potentially explosive gas atmospheres, where a T4 temperature class permits. Available in 2, 4 or 6 handlamp bank configurations, the stands can be placed on level ground or mounted on a tripod (available separately) to elevate and direct and focus the light to the desired task working area.

The XT-75 Zone 0 Handlamps' bespoke optics coupled with the highest performance 'fitted for life' LED light sources deliver an outstanding light output, of over 350lms each, from the high intensity spot beam, switchable to a wide-angle flood. The battery duration at high output is 7.5 hours and 15 hours in power save mode and is monitored with a state of battery charge indicator. Made of stainless steel, each stand incorporates handlamp holders with 'snap-in/snatch-out' function for quick release but secure retention and allows the bank of handlamps to be manually tilted and locked in position. The handlamps can be removed from the stand in the Zone 0 hazardous area and used for close inspection work or in awkward to reach locations, plus the Flood Bank can act as an emergency backup light source independent of lead powered lighting.



CLICK HERE  
to view  
datasheet

### LINKEX™ WF-300XL LED Floodlite

The Linkex™ WF-300®XL LED Floodlite is a high performance, robust, lightweight and portable Floodlite for use in potentially explosive atmospheres. It delivers an outstanding level of white light and is fully compliant with the latest ATEX and IECEx standards, including OP IS - optical intrinsic safety.

Fitted with wolf's unique SOVI™ system to ensure safe operation, the Floodlite is certified for safe use in Zone 1, T4, IIC, -40°C to +55°C ambient, hazardous gas, vapour, mist or dust environments.

The WF-300®XL is also available as a fixed light for Hazardous Areas.



CLICK HERE  
to view  
datasheet

### LINKEX™ WF-250XL LED Floodlite

The LinkEx™ WF-250XL LED Floodlite is designed to give the optimum level of light for working in smaller, hazardous area confined spaces. Ideal for 24-volt applications with a limited power supply, up to 8 floodlights can be used in different strings from just one Wolf transformer.

Fitted with Wolf's unique SOVI™ system to ensure safe operation, the Floodlite is certified for safe use in Zone 1, T4, IIC, -40°C to +55°C ambient, hazardous gas, vapour, mist or dust environments.

Robust, lightweight and easily portable, the WF-250XL produces 3,189 lumens of bright white light which effectively illuminates a smaller workspace without the uncomfortable glare of more powerful Worklights.



CLICK HERE  
to view  
datasheet

### LINKEX™ LED Temporary Luminaire

The LinkEx™ LED Temporary Luminaire is a high-powered LED Leadlamp for use in short-term lighting installations and maintenance tasks. It is CE marked to the ATEX directive and IECEx certified for safe use in Zones 1 and 2 potentially explosive gas and dust atmospheres, where a T3/T4 (model dependent) temperature class permits.

LINKEX™ LED ATEX Emergency Temporary Luminaire also available, power source: lead and emergency battery.

---

## LINKEX™ ATEX Tank Lighting Kits

The ATEX & IECEx certified Worklite™ is a rechargeable, high output LED floodlight for use in harsh, remote applications for extended periods. It offers unique levels of light output, operational duration and robustness in a self-contained battery powered lamp. It is CE marked to the ATEX Directive for safe use in Zones 1, 2, 21 and 22 potentially explosive gas, vapour, mist and dust atmospheres, where a T4 temperature class permits.

Two ATEX Worklite™ models are available: the **WL-85**, which has an 18 LED lamp head giving over 3100 lumens output at source, and the **WL-80** which also has an 18 LED lamp head giving 3100 lumens of light output but comes with a smaller, lighter battery to make it easily portable. Both models deliver a piercing spot beam and a flood of lower-level fringe light. Low maintenance is assured by the LED light source which is designed to give over 100,000 hours life.

The duration of the WL-85 is up to 21 hours on 'high power' and up to 40 hours on 'low power' and the WL-80 is up to 15 hours on 'high power' and up to 22 hours on 'low power'.



# Fans and Ventilators for Hazardous Areas

Wolf RAMFAN is the world's leading manufacturer of fans and ventilators for hazardous areas.



CLICK HERE  
to view  
datasheet

- Hazardous area blower with a totally enclosed motor which is safe for use in a variety of adverse atmospheres
- Super compact and lightweight
- Delivers the highest airflow in it's class
- Ideal for hazardous areas, ATEX zones 1 and 2
- It is tough, resistant to chemicals and has anti-static housing
- Operates at an ultra-quiet level of 74dB at 1 metre
- Available with different length meter ducts
- Thermally protected cut off switch
- Starter secured in flame proof motor enclosure to prevent risk of ignition when powered on
- Extended reach power cable 7.6 metres
- Available in 3 sizes



# Intrinsically Safe Communications Equipment



## Vetting Inspections - “Live Stream” Video Representation

Working with all types of vessels you will know about the highly challenging and rigorous ship tests, also known as Vetting Inspections. These inspections are normally conducted by a visiting, shore based inspector who will represent the Flag, Port or Charter interests.

Due to Covid travel restrictions, vetting inspectors have been restricted from overseas travel. Vessels are required to remain compliant and therefore, vetting inspections can now be conducted with latest technology VIDEO representation of vessels Tanker Risk Assessment procedure - providing vetting inspectors a digital video overview direct from vessel operations for vetting inspectors to report on vessels or operational deficiencies, to detail both positive and negative comments on the vessel's operation. They then make reports with the found deficiencies (rating them from High to Low risks) and give it to the vessel master at the end of every inspection.

IM&M have the equipment to facilitate your remote, vetting Inspection needs.

‘Live streaming’ VIDEO reports utilising the very latest intrinsically safe smart phones, tablets and cameras by vessels Master's and Captain's are now widely accepted for vetting inspectors report submissions.

In a changing world, this technology can help to reduce costs, reduce environmental impact and may be a positive legacy after the Global Pandemic as we all seek to “build back better”.



---

## Intrinsically Safe Smart Phones



### IS530.1 ATEX Zone 1 Certified ATEX Android Smartphone

Zone 1 certified smart phone with current technology. It combines modern design, updated technology and robustness of an industrial product.

#### Key Features

- Android TM 9.0
- 4G (LTE)
- Bluetooth® 5.0
- 4,5 " (11.43cm) Gorilla Glass ® 3. Generation
- 4,5" (11.43 cm) (1280 x 720 pixel)
- Quick charge with magnetic charging point
- Highest camera resolution of it's class
- Huge internal memory of 64 GB
- Universal lateral ISM interface
- Usable with gloves, PTT ready

[CLICK HERE](#)  
to view  
datasheet



### Ecom Ex Handy 10 Series

The Pepperl+Fuchs brand ecom introduces Ex-Handy 10 - the new generation of intrinsically safe 4G/LTE feature phones for a broad variety of applications - from pure communication to Push-to-Talk or lone worker protection.

The Ex-Handy 10 with Android operating system is the ideal companion for innovative Industry 4.0 applications in hazardous areas. With IP68 and Gorilla® Glass you can operate the Ex-Handy 10 in the roughest of environments. With a 5-year product lifecycle and global Ex-certifications to meet all requirements, it provides a low-risk investment to the user.

With customer-specific configurations and customizations, it also handles the most demanding of situations.

[CLICK HERE](#)  
to view  
datasheet



[CLICK HERE](#)  
to view  
datasheet

## Ecom Smart Ex® 02

This rugged smartphone has a large, high-resolution display, powerful features, and optimized accessories. Its extended temperature range makes it suitable for even the harshest environments.

Designed to support 21 LTE frequency bands, the Smart-Ex® 02 has no SIM lock and can be connected to different networks worldwide. An Android™ operating system enables the intrinsically safe device to work safely, quickly and efficiently.

The ergonomic design and intuitive user interface enhance the user experience, and optimized accessories and peripherals ensure total compatibility with current and future ecom products. With the most powerful replaceable battery on the market (4400 mAh), longer shifts and 24-hour work coverage are possible.

The Smart-Ex® 02 also sets new standards when it comes to security. Regular security updates prevent unauthorized access to confidential personal and company data.

Ecom's Android™ Smartphones Smart-Ex® 02 series (ATEX / IECEx Zone 1/21 & Division 1, ATEX / IECEx Zone 2/22 and Division 2) can be used as an intrinsically safe camera in hazardous areas. Camera only – Via kiosk mode, the functionality of the Smart Ex® 02 can be limited to using only the camera function.



## Ecom Smart Ex® 02M Intrinsically Safe Smart Phone Certified for Mining

The Smart-Ex® 02M comes with the same and unrivalled features as the Zone 1 / Division 1 Smartphone, the Smart-Ex® 02. Same performances, same features, same quality. Of course, it is also unlocked, can be used with dirty or wet work gloves and has a powerful battery for a long workday.

However, it is important to know that the Smart-Ex® 02M is a stand-alone device with an own mining certification. With an ambient temperature range from 0°C to +50°C it is approved and certified for use in ATEX and IECEx Mining areas.



[CLICK HERE](#)  
to view  
datasheet

## Pixavi Phone

ATEX/IECEx Zone 1 / 21 Android™ Smartphone. The Pixavi Phone brings best-in-class technical specifications into the toughest environments with confidence and style. Highly ruggedized, yet elegant and sleek, the intrinsically safe Android Pixavi Phone guarantees safety, reliability and top performance. Simply put, it's the safe choice for high performance in hazardous areas.

---

## Explosion Proof Tablets - Android



### Ecom Tab-Ex® O2 DZ1 (Zone 1/21 & DIV 1)

Designed for your application, with all your needs considered:

- Rugged design
- Sensor / gyroscope (magnetic compass)
- Samsung Knox: Reliable enterprise mobile data security
- High quality 8MP / 5MP camera with auto focus function / optional: Non-camera
- Fast processor and high storage capacity

[CLICK HERE](#)  
to view  
datasheet



### Tab-Ex® Pro D2 Android Tablet for Division 2

The Tab-Ex® Pro from ecom expands the Tab-Ex series as the world's first 10-inch Android tablet for hazardous areas.

The Tab-Ex® Pro's large display, is ideal for demanding applications and for accessing web-based content. In addition, it allows employees to easily transition from working in the field to working at the office. Supported by Samsung DeX, the tablet allows a full desktop experience.

[CLICK HERE](#)  
to view  
datasheet

---

## Explosion Proof Tablets - Windows



### Ecom Pad-Ex® 01 P8 DZ2 (Zone 2 & DIV 2) & Pad-Ex® 01 P8 D2 (DIV 2)

While being given its level of ruggedness, Pad-Ex® 01 P8 DZ2 & Pad-Ex® 01 P8 D2 meets all the environmental requirements and supports the 8th generation Intel® Core™ i5 processor. The tablets have battery life up to 7 hours and Windows® 10 Pro support.

Combining robust features and a large screen size, superior performance is ideal for field operatives of all sectors to complement or even substitute Desktop PC, laptop or wall mounted display.

[CLICK HERE](#)  
to view  
datasheet

---

## Intrinsically Safe Wearable Camera



[CLICK HERE  
to view  
datasheet](#)

### Ecom The Cube 800 (Zone 1/21 & DIV 1)

Designed for safe operation in Ex-certified and rugged environments, the CUBE 800 brings hands-free collaboration to the world's toughest locations.

With dual camera inside, users can choose optical and thermal camera modes. The integrated thermal imaging camera provides infrastructure health analysis and trending information, while the optical camera provides HD video and images. The integrated light ring and laser aiming pointer ensures high quality visuals.

The magnetic auto-latch mount provides an easy and secure way to attach the CUBE 800 to hardhat and headband accessories. Its multi-purpose design allows for hands-free, handheld, and monopod use to capture visuals in hard-to-reach places.

---

## Intrinsically Safe Bluetooth Headset



### ATEX Zone 1 Sensear Bluetooth Headset

- Clear two-way radio communication in high-noise environments
- Bluetooth cellular connection for conversation and audio streaming
- Limit 'in-ear' exposure to 82 dB(A)
- Compatible with industry-leading two-way radios via removable wired connection or Bluetooth
- Improved Short Range with additional channel banks
- Upgraded 24-hour battery life for use in multiple shifts

[CLICK HERE  
to view  
datasheet](#)

---

## eDS Portal

'Digital Products and Services' is a solution that combines automated staging, mobile management and device analytics. It can also be used as a fully-fledged enterprise mobility management system if desired. It is a ready to use service that ensures quality and security for all devices, which saves time and valuable resources.

- Staging and enrolling - equip your device with the tools you need. Enroll your device in your existing mobile device management system.
- Configuring and managing - use the integrated MDM solution to configure enhance settings and manage your devices and profiles online.
- Analysis and diagnostics - specially designed analytic and diagnostic tools help with viewing live and historical data.
- Alert messaging - for whenever your employees need lone worker protection or another communication method.

# Senseware Flame Detectors and Test Lamps

Best in class, Industrial UV, UV/IR, and IR3 Flame Detectors. Flame Detector options include:



CLICK HERE  
to view  
datasheet

## Senseware UV Flame Detector

The Senseware UV (Ultraviolet) Flame Detector utilizes a microprocessor for sophisticated electronic signal analysis, suitable for indoor and outdoor applications such as fume hoods and outdoor stores. The flame detector has non-corrosive housing and is suitable for indoor industrial areas where corrosion may play a role. UV (Ultraviolet) energy is emitted by almost every fire, both hydrocarbon and non-hydrocarbon fires. The Ultraviolet Flame Detector will alarm to Arc Welding. To prevent unwanted alarms, for example, electric arcs and or uncovered halogen lamps, the delay time for an alarm is 8-10 seconds. This is sufficient for 90% of the applications. The UV Flame Detector is suitable for applications that include Hydrogen, Radio Amplifier and Antennas but also Heating Rooms for chemicals and Inside Fume hoods in laboratories. A self-test is performed every hour to make sure the sensor and electronics operate well. A Test Lamp is available for regular inspections and end-to-end testing.

*Compatible with:*  
*Senseware Flame Detector, Test Lamps*

## Senseware UV/IR Flame Detector

The SENSE-WARE UV/IR Flame Detector is a combination of an Ultraviolet and Infrared Flame detector which utilizes a microprocessor for sophisticated electronic signal analysis. The IR part of the flame detector has an additional alarm criterion, the analysis of the flame flicker- frequency. The UV and the IR sensor must both exceed their alarm threshold to initiate a fire alarm. The UV/IR Flame Detector has good false alarms rejection capabilities because the Ultraviolet sensor and the Infrared sensor do not share false alarm sources. The UV/IR Flame Detector can therefore be applied in areas where single UV or IR flame detectors could potentially cause false and/or unwanted alarms. To prevent unwanted alarms, the dynamic delay time for an alarm is 4-8 seconds depending on the size and or the distance to the flames. The UV/IR Flame Detector is suitable for applications that include Hydrogen but in fact, every flame that emits hot water will be detected. A self-test is performed every hour to make sure the sensor and electronics operate well. A Test Lamp is available for regular inspections and end-to-end testing.

CLICK HERE  
to view  
datasheet

*Compatible with:*  
*Senseware Flame Detector, Test Lamps*



---

## Senseware IR3 Flame Detector

The SENSE-WARE IR3 flame detectors utilizes a microprocessor for sophisticated electronic signal analysis. The Infrared sensors must exceed their alarm threshold balance to initiate a fire alarm. The triple IR flame detector uses an additional alarm criterion, the analysis of the flame flicker-frequency. The infrared IR3 flame detector has good false alarm rejection capabilities, including Arc Welding (> 3m), chopped sunlight or halogen lights but is still able to detect a real fire at the same time. To prevent unwanted alarms, the dynamic delay time for an alarm is 4-8 seconds depending on the size and or the distance to the flames. The triple IR flame detector is suitable for the detection light- and heavy Hydrocarbon fires, in fact, every yellow to red flame that emits Carbon dioxide will be detected. A self-test is performed every hour to make sure the sensor and electronics operate well.

[CLICK HERE  
to view  
datasheet](#)

### *Compatible with:*

*Senseware Flame Detector, Test Lamps*

---

## Senseware Universal T-229/4P UV/IR Flame Detector Test Lamp

The T-229/4P universal UV/IR Flame detector Test Lamp activates UV, IR en UV/IR Flame detector equipment that work at 185-235 nm UV and wide band IR radiation. For use in safe areas only.

- Universal
- Selectable Continuous mode for UV and Pulsing mode for IR and UV/IR
- UV detector check up to 8 meters (26 ft)
- IR and UV/IR flame detector check up to 4 meters (13 ft)
- Universal charger 100-240 Vac with pins for US, EU, GB en AU

[CLICK HERE  
to view  
datasheet](#)



**SENSE-WARE**  
THE FLAME DETECTOR  
COMPANY





## Flow Meters and Flow Controllers

Through one of our key suppliers IM&M can supply a comprehensive range of flow meters and flow controllers including: variable area, electromagnetic, ultrasonic, vortex and mass flow meters.

### We also offer:

- A comprehensive range of level meters for both liquids and solids
- In line analytical sensors that can be used for measuring pH, ORP, conductivity, chlorine and oxygen
- No external transmitter needed
- Suitable in Zone 0 areas
- Fits 98% of mounting assemblies
- Offline calibration
- Provides precise maintenance predictions
- Low investment and maintenance costs

# Thermometers

IM&M sell a range of thermometers, infrared thermometers, temperature gauges and temperature probes suitable for most industries.

## Fluke Infrared Thermometer

The Fluke 62 MAX+ infrared thermometer delivers the features and accuracy you need to non-contact temperature measurements on a wide range of equipment. Just point, shoot, and read the temperature of transformers, motors, pumps, panels, breakers, compressors, duct, steam lines, valves, and vents. Its small size and versatile features make it extremely easy to use. Plus, it's rugged enough to take a 3-meter drop, which is good news if you work from a ladder. The accurate infrared technology and dual lasers provide a 12:1 distance to spot ratio, making it easier to accurately measure temperatures in hard-to-reach areas. With its IP54 rating for dust and water resistance you can rely on the Fluke 62 MAX+ to provide extremely accurate temperature measurements, rain or shine, in even the dirtiest and dustiest industrial sites.



[CLICK HERE](#)  
to view  
datasheet

**FLUKE**

## Martindale Infrared Thermometer

The Martindale IR88 is a pistol style infrared thermometer, with a laser marker to ensure accurate spot measurement. The clear LCD display the temperature in both °C or °F.

A limit function allows you to set an upper and lower temperature thresholds and an alarm sounds if these limits are exceeded. There is also an optional auto "power off to conserve battery life.

Adjustable emissivity values from 0.1 - 1.0 allow measurement compensation for a range of different materials.



[CLICK HERE](#)  
to view  
datasheet

**MARTINDALE**  
ELECTRIC

# Work Place Impairment Testing

To measure the levels of alcohol intoxication for all personnel. They measure the actual concentration of alcohol in the breath to allow comparison to permitted levels.

## Dräger Alcotest 6820

The Dräger Alcotest 6820 handheld tester provides the quality, accuracy and reliability that our customers have come to expect from our breath alcohol detection products. With a wide range of available configurations, the instrument is easily adaptable to meet user requirements and local regulations for preliminary breath testing.



[CLICK HERE](#)  
to view  
datasheet

## Lion 700 Alcolmeter®

Widely used in global law enforcement, medical and industrial markets. The Lion Alcolmeter® is a compact easy to use breath analysis instrument, certified to EN15964. A variant is type approved by the Home Office, Great Britain for UK Police use.

- Has the capability to store up to 3,000 records
- Can be connected to a portable printer enabling print out results from tests to be used in HR, legal and safety monitoring activities
- Simple, multi use button
- Accessories available include printer, silicone case, leather pouches and software



[CLICK HERE](#)  
to view  
datasheet

## Alco SCAN CA20 Pro Breathalyzer

The CA20 Pro replaces the AL6000 and AL7000 models, the CA20 Breathalyzer offers superb accuracy thanks to it's 'Smart Fuel Cell' technology. This device has quickly established itself as a robust, highly accurate Breathalyzer and is already popular with the NHS and a large number of companies due to it's robust Breathalyzer design.



[CLICK HERE](#)  
to view  
datasheet



[CLICK HERE  
to view  
datasheet](#)

**Dräger**

### Dräger Alcotest 5000

The Dräger Alcotest 5000 is a professional breath-alcohol tester which detects the presence of alcohol. The high-speed breathalyser lets you perform numerous tests in no time! The special funnel reduces the back flow of expired air to a minimum, preventing the risk of infection to subsequent test subjects.

- Maximum control in minimum time with Dräger's fastest ever breathalyser
- High precision rapid alcohol testing with hygienic funnel design
- Breath alcohol testing at a distance



**Dräger**

### Dräger Alcotest 6000

The Dräger Alcotest 6000 allows the professional user to perform a breath alcohol test with speed and precision. The measuring technology of this small and user-friendly portable measuring device has already been proven worldwide and has sold over 1,000,000 times.

[CLICK HERE  
to view  
datasheet](#)

- Breath alcohol testing made easy
- Versatile and tough
- Convenient to use
- Simple hygienic, Slide n Click mouth piece
- The Alcotest hygiene plus

## Drug Testing

### Dräger Drug Check 3000

Find out within minutes if a person recently consumed certain drugs. The compact and quick saliva (oral) fluid-based drug test yields reliable results affordably and easily. The non-invasive drug check kit does not require electricity and can be used anywhere. Ideal for a quick, on-site analysis.

*Compatible with:*  
*Dräger Drug Test 5000*

**Dräger**



[CLICK HERE  
to view  
datasheet](#)

# Portable Water Testing Kit

---



IM&M can offer the marine industry water testing kits and support in implementing a water safety plan to meet the requirements of ISO, ILO, IHR, WHO and now MLC 2006, which came into force in August 2013.

It also enables vessels to confidently demonstrate compliance to Port and Flag State Authorities. Frequent and documented inspections should be carried out to ensure that drinking water is of an appropriate quality (from the supply to the vessel, the water tanks, through the supply channels and to the point of distribution). The water testing kits aid the testing, monitoring and record keeping requirements of onboard drinking water systems.

- Each kit will be supplied with sufficient materials to carry out regular tests for a year
- We can also support shipping/management companies/vessels in carrying out drinking water risk assessments and in producing water safety plans
- Refill packs are also available to re-stock water kits annually

**IM&M can also supply boiler water testing kits.**



# CCTV Surveillance - Networked Infra-Red Camera and Recording Media

---



Due to an increasing demand for retrofit CCTV security and surveillance on vessels. IM&M in conjunction with Hikvision can supply intelligent and innovative leading CCTV surveillance networked Safe Area or Explosion Proof Infra-Red, Thermal, Ex Cameras.

Our dedicated engineers can specify, pre-programme and design your retrofit CCTV system with integration to your existing I.T protocol and vessels network platform.

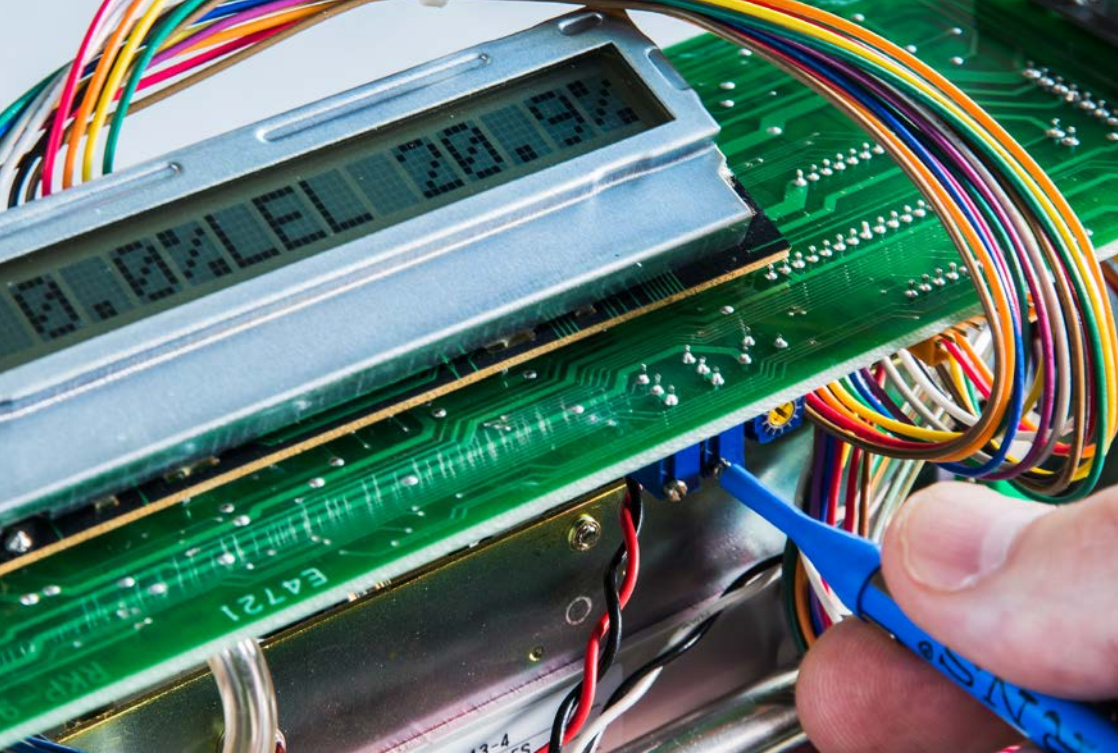
High density 8MP / 4MP cameras with intelligent and innovative leading CCTV surveillance networked video recorder.

Our innovative self-installation kits with simplified instructions and installation accessories allow vessel crew to perform retrofit installation quickly, easily, and without vast additional wiring with networked transceiver and repeater hub technology. Utilising your existing network infrastructure to adopt CCTV signals and backbone.

IM&M has the experience and track record to:

- Specify CCTV systems and recording media
- Network integration
- Add technical value
- Save money - easy installation
- 24/7 technical assistance, on-site training and support
- Retrofit installation in kit form
- Network integration, allocate I.P addressing and camera labelling
- Expand existing I.T Network to adopt CCTV surveillance
- Simplified installation instructions
- Explosion proof specification, II 2 G Ex db IIC T6 Gb, II 2D Ex tb IIIC T80°C Db IP68

**HIKVISION**



## IM&M's Service and Calibration Lab

---

Our fully equipped ISO 9001:2015 approved laboratory offers a professional repair and calibration service. This work can also be carried out on site if downtime of your instruments has to be kept to a minimum.

- Experienced, manufacturer approved, fully trained technicians
- Extensive range of Gas Detection, Ullage Temperature Interface, Temperature and Pressure instruments covered
- Competitive prices and fast turnaround
- First class customer support, providing technical guidance, service updates and quotations
- Large quantity of products and spares held at our Sheffield headquarters
- 24 hour technical support
- Manufacturer approved service centre of brands including MSA, Dräger and Honeywell
- Product safety inspections onsite and in house [Click Here to Request a Quote or Instrument Return Form](#)

# IM&M Brand Partners

---



## Ordering Process

---

For enquiries, quotes and orders call us on:  
**+44 (0) 114 285 3040** or email: **sales@im-m.co.uk**

Order online through our online store:

[www.im-m.co.uk](http://www.im-m.co.uk)

Payments by:





## IM&M Ltd

Trident House, Baxter Road  
Sheffield, South Yorkshire, S6 1JF

T: +44 (0) 114 285 3040

F: +44 (0) 114 285 3049

E: [sales@im-m.co.uk](mailto:sales@im-m.co.uk)

[www.im-m.co.uk](http://www.im-m.co.uk)

