



Gas cooler series TC-MIDI X2

In the chemical industry, petrochemistry or biochemistry, reliable process control relies on prompt and exact determination of the operating parameters.

Here, gas analysis is the key for safe and efficient control of process flows, environmental protection and quality assurance. This benefits controlling flue gas emission in power stations or exhaust gas analysis in automotive engineering, as well as the efficient control of air separators or sterile production and packaging in the food industry.

Many of the analysis processes used in these fields require extracting the sample gas. This inevitably also extracts process-related contamination such as particles or moisture. These in turn can impact the measurement results or damage the measuring cells. The sample gas must therefore be conditioned before entering the analyser.

Many applications require equipment which can be used in explosive areas. This is where the TC-MIDI X2 series provides solutions for Zone 2 or Class I, Division 2.

The TC-MIDI X2 sample gas cooler is a component in this conditioning chain if the process or ambient conditions require a higher cooling capacity.

ATEX and IECEx Zone 2 approval

FM C-US approval for Class I, Division 2

Compact design: Pre-installed and ready to connect

Low maintenance costs based on easy accessibility

One or two gas paths

Heat exchanger made from stainless steel, Duran glass or PVDF

Adjustable outlet dew point and alarm thresholds

Low operating noise

Rated capacity 195/175 kJ/h, 40 °C/50 °C version

Dew point stability 0.1 °C

Status display and output

Cooling block temperature display

Moisture detector, filter, analog output, peristaltic pump, and sample gas pump optional



Overview

The TC-MIDI X2 series was designed specifically for high cooling capacities and high ambient temperatures.

The Peltier coolers are distinguished according to cooling capacity/operating temperature. This classification is reflected in the type designation. The exact item number of the model defined by you is determined by the model code in the category ordering information.

Application	Standard applications	
Operating temperature	40 °C	50 °C
1 heat exchanger	TC-MIDI 6111 X2	TC-MIDI 6112 X2

Additional components which every conditioning system should feature can optionally be integrated:

- Peristaltic pump for condensate separation,
- Filter,
- Moisture detector,
- Sample gas pump.

This allows for various configurations of cooler and options. Here the approach is to simplify creating a complete system in a cost-efficient way through pre-installed components with hoses connected. We further paid attention to easy access to wear parts and consumables.

Description of functions

The cooler is controlled by a microprocessor. With the factory preset the control already incorporates the various characteristics of the built-in heat exchangers.

The programmable display shows the block temperature in the selected display unit (°C / °F) (factory preset °C). Application-specific settings can easily be configured guided by the menu, using the 5 buttons. For one, this applies to the target outlet dew point, which can be set from 2 to 20 °C (36 °F to 68 °F) (factory preset 5 °C/41 °F).

And then the warning thresholds can be adjusted for low and excess temperature. These are set relative to the outlet dew point T_a setting.

For the low temperature the range is $T_a - 1$ to $- 3$ K (at a minimum 1 °C/ 34 °F cooling block temperature), for the excess temperature the range is $T_a + 1$ to $+ 7$ K. The factory presets for both values are 3 K.

The flashing display and the status relays indicate the conditions are below or above the configured warning range (e.g. after switching on).

The status output can e.g. be used to control the sample gas pump to allow for the gas flow to only be switched on once the permissible cooling range has been reached or shut off the pump in the event of a moisture detector alarm.

The separated condensate can be drained via connected peristaltic pumps or add-on automatic condensate drains.

Fine mesh filters can also be used, which in turn can be installed in optional moisture detectors.

The glass dome allows the dirt level of the filter element to easily be determined.

The moisture detector is easy to remove. This may be required if a condensate enters the cooler due to a malfunction and the peristaltic pump or the automatic condensate drain is unable to remove it.

A P1 gas pump can be attached to the gas cooler, optionally also with bypass valve for regulating the flow. This allows the sample gas pump to be expanded by a single-leg system, so when equipped with a single heat exchanger or for the respective application the two gas paths of the dual heat exchangers are switched in series, for example Cooling 1 – Pump – Cooling 2.

Delta T control option

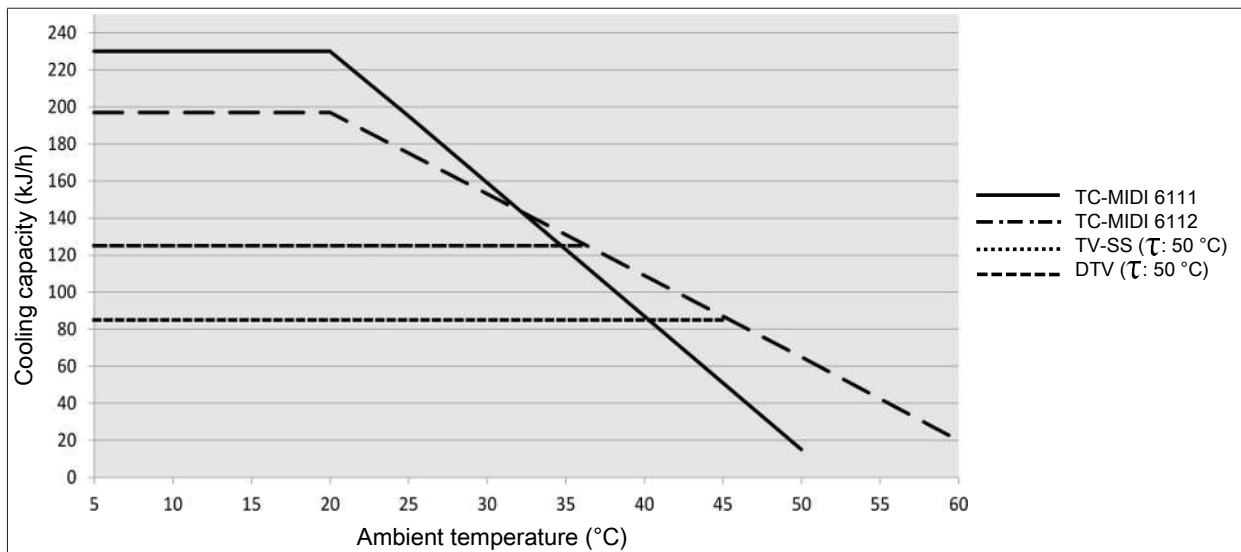
Not all applications require an outlet dew point of 5 °C (41 °F). In some applications a higher dew point is sufficient. In other applications a stable outlet dew point doesn't matter, it's enough for the gas to be dry, so if the outlet dew point has an adequate difference in temperature below the ambient temperature.

Here the electronics measure the ambient temperature and regulate the outlet dew point to an adjustable value below it. This extends the potential cooling capacity to the limits of the heat exchanger. Here it's important to note the outlet dew point fluctuates along with the ambient temperature and a stable dew point cannot be a prerequisite for the measurement.

The target temperature range is defined by the ambient temperature, the adjustable temperature difference and the alarm limits. If the block temperature is not within the target range with active Delta T-control, the status message "dt" will flash in the display.

Example: At a difference of 30 °C (30 K/54 °F), at a set outlet dew point of 5 °C (41 °F) this means the dew point remains stable up to an ambient temperature of approx. 35 °C (95 °F), and the safe drop is only preferred over the ambient temperature with ambient temperature peaks over 35 °C (95 °F). The cooling capacity specified in the cooling capacity graphs at 35 °C (95 °F) is then available at above 35 °C (95 °F).

Performance curves



Note: The limit curves for the heat exchangers apply to a dew point of 50 °C.

Gas cooler technical data

Gas Cooler Technical Data

Ready for operation	after max. 10 minutes			
Ambient temperature	5 °C to 60 °C			
Gas output dew temperature preset: adjustable:	5 °C 2 °C...20 °C or Delta T control			
IP rating	IP 20			
Mechanical load	Tested based on DNV-GL CG0339 vibration class A (0.7g) ¹⁾ 2 Hz-13.2 Hz amplitude ± 1.0 mm 13.2 Hz -100 Hz acceleration			
Housing	Stainless steel, brushed			
Packaging dimensions	approx. 350 x 220 x 220 mm			
Weight incl. heat exchanger	approx. 11.5 kg approx. 15 kg at full expansion stage			
Electrical data	Unit without add-on		Unit with add-on (P1.x + peristaltic pump)	
	230 V AC	115 V AC	230 V AC	115 V AC
	+5/-10%	+5/-10%	+5%	+5%
	50/60 Hz	50/60 Hz	50 Hz	60 Hz
	1.2 A	2.4 A	1.8 A	3.6 A
	200 W / 280 VA		290 W / 420 VA	
Recommended fuse (characteristic: delayed action)	3.15 A	6.3 A	3.15 A	6.3 A
Status output switching capacity	max. 250 V AC, 150 V DC 2 A, 50 VA, potential-free			
Electrical Connections	Plug per EN 175301-803			
Gas connections and condensate outlet	Heat exchanger see table "Heat Exchanger Overview" Filter, moisture detector adapter G1/4 or NPT 1/4"			
Parts in contact with media Filter: Moisture detector: Heat exchanger: Peristaltic pump: Sample gas pump: Tubing:	see "Technical Data - Options" see "Technical Data - Options" see table "Heat Exchanger Overview" see "Technical Data - Options" see "Technical Data - Options" PTFE/Viton			
Markings:	FM18ATEX0012X: II 3 G Ex ec nC IIC T4 Gc IECEx FMG 18.0005X: Ex ec nC IIC T4 Gc FM18US0021X/FM18CA0010X: CL I DIV 2 GP ABCD RU C-DE.HA65.B.00608/20			

¹⁾ not in conjunction with add-on sample gas pump

Technical Data - Options

Analogue Output Cooler Temperature Technical Data

Signal	4-20 mA or 2-10 V corresponds to -20 °C to +60 °C cooler temperature
Connection	M12x1 plug, DIN EN 61076-2-101

Technical Data peristaltic pumps CPsingle X2 / CPdouble X2

Ambient temperature	0 °C to 50 °C
Flow rate	0.3 L/h (50 Hz) / 0.36 L/h (60 Hz) with standard hose
Vacuum inlet	max. 0.8 bar
Pressure inlet	max. 1 bar
Outlet pressure	1 bar
Hose	4 x 1.6 mm
Condensate outlet	Hose nipple Ø6 mm Screw connection 4/6 (metric), 1/6"-1/4" (US)
Protection class	IP 40
Materials	
Hose:	Norprene (Standard), Marprene, Fluran
Connections:	PVDF

Technical Data Sample Gas Pump P1.3

Ambient temperature	0 °C to 50 °C
Operating pressure	max. 1,3 bar abs.
Nominal outlet	280 l/h (at p = 1 bar abs.)
Materials in contact with media vary by configuration	PTFE, PVDF, 1.4571, 1.4401, Viton

Technical Data Filter AGF-PV-30-F2-L

Ambient temperature	3 °C to 100 °C
max. operating pressure with filter	2 bar
Filter surface	125 cm ²
Filter mesh	2 µm
Dead volume	108 ml
Materials	
Filter:	PVDF, Duran glass (parts in contact with media)
Seal:	Viton
Filter element:	sintered PTFE

Technical Data FF-3-N Moisture Detector

Ambient temperature	3 °C to 50 °C
max. operating pressure with FF-3-N	2 bar
Material	PVDF, PTFE, epoxy resin, stainless steel 1.4571, 1.4576

Heat exchanger description

The energy content of the sample gas and the required cooling capacity of the gas cooler is determined by three parameters: gas temperature ϑ_G , dew point τ_e (moisture content) and volume flow v . The outlet dew point rises with increasing energy content of the gas. The approved energy load from the gas is therefore determined by the tolerated rise in the dew point.

The following limits are specified for a standard operating point of $\tau_e = 50\text{ °C}$ and $\vartheta_G = 70\text{ °C}$. The maximum volume flow v_{\max} in NI/h of cooled air is indicated, so after moisture has condensed.

If the values fall below τ_e and ϑ_G , the flow v_{\max} may be increased. For example, on the TG heat exchanger the parameter triple $\tau_e = 40\text{ °C}$, $\vartheta_G = 70\text{ °C}$ and $v = 425\text{ NI/h}$ may also be used in place of $\tau_e = 50\text{ °C}$, $\vartheta_G = 70\text{ °C}$ and $v = 345\text{ NI/h}$.

Please contact our experts for clarification or refer to our design program.

Heat exchanger overview

Heat exchanger	TS TS-I ²⁾	TG TG-I ²⁾	TV-SS TV-SS-I ²⁾	DTS (DTS-6 ³⁾) DTS-I (DTS-6-I ³⁾) ²⁾	DTG DTG-I ²⁾	DTV ³⁾ DTV-I ²⁾³⁾
Version/Material	Stainless steel	Glass	PVDF	Stainless steel	Glass	PVDF
Flow rate v_{\max} ¹⁾	500 L/h	400 L/h	235 L/h	2 x 250 L/h	2 x 200 L/h	2 x 160 L/h
Inlet dew point $\tau_{e,\max}$ ¹⁾	80 °C	80 °C	65 °C	80 °C	65 °C	65 °C
Gas inlet temperature $\vartheta_{G,\max}$ ¹⁾	180 °C	140 °C	140 °C	180 °C	140 °C	140 °C
Max. Cooling capacity Q_{\max}	450 kJ/h	230 kJ/h	120 kJ/h	450 kJ/h	230 kJ/h	185 kJ/h
Gas pressure p_{\max}	160 bar	3 bar	3 bar	25 bar	3 bar	2 bar
Pressure drop Δp ($v=150\text{ L/h}$)	8 mbar	8 mbar	8 mbar	5 mbar each	5 mbar each	15 mbar each
Dead volume V_{tot}	69 ml	48 ml	129 ml	28 / 25 ml	28 / 25 ml	21 / 21 ml
Gas connections (metric)	G1/4	GL 14 (6 mm) ⁴⁾	DN 4/6	6 mm tube	GL14 (6 mm) ⁴⁾	DN 4/6
Gas connections (US)	NPT 1/4"	GL 14 (1/4") ⁴⁾	1/4"-1/6"	1/4" tube	GL14 (1/4") ⁴⁾	1/4"-1/6"
Condensate out connections (metric)	G3/8	GL 25 (12 mm) ⁴⁾	G3/8	Tube 10 mm (6 mm)	GL18 (10 mm) ⁴⁾	DN 5/8
Condensate out connections (US)	NPT 3/8"	GL 25 (1/2") ⁴⁾	NPT 3/8"	Tube 3/8" (1/4")	GL18 (3/8") ⁴⁾	3/16"-5/16"

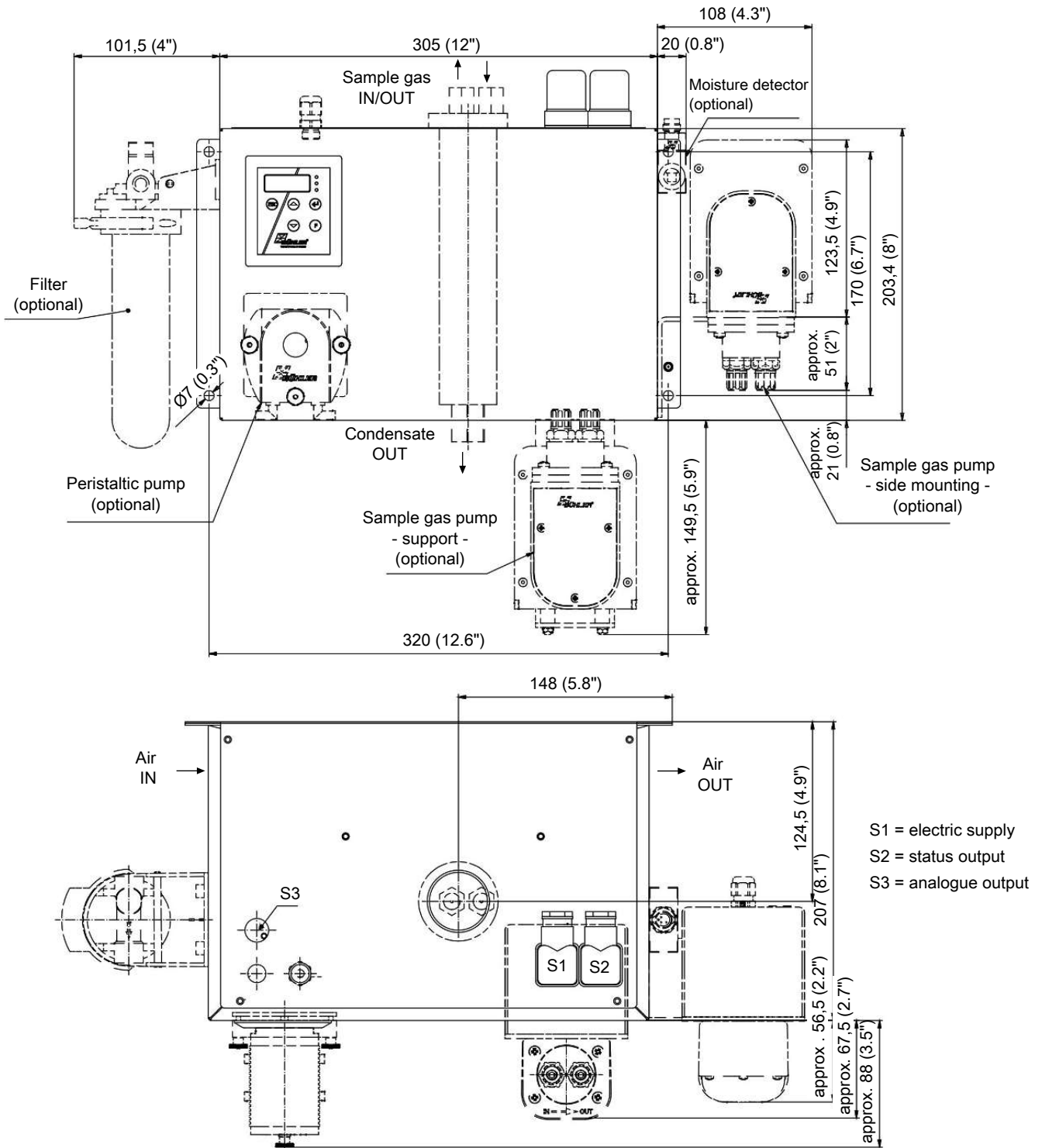
¹⁾ Max. cooling capacity of the cooler must be considered.

²⁾ Models marked I have NPT threads or US tubes, respectively.

³⁾ Condensate drain only possible with condensate pump.

⁴⁾ Gasket inside diameter.

Dimensions (mm)



Ordering instructions

Gas cooler models with one gas path inside the heat exchanger

The item number is a code for the configuration of your unit. Please use the following model code:

4496	3	1	1	X	2	X	1	X	X	X	X	X	X	X	X	0	X	0	Product Characteristics
Gas cooler types																			
1 TC-MIDI 6111 X2: Ambient temperature 40 °C																			
2 TC-MIDI 6112 X2: Ambient temperature 60 °C																			
Certifications																			
2 for explosive areas																			
Supply voltage																			
1 115 V AC, 50/60 Hz																			
2 230 V AC, 50/60 Hz																			
Heat exchanger																			
1 1 0 Stainless steel, TS, metric																			
1 1 5 Stainless steel, TS-I, US																			
1 2 0 Duran glass, TG, metric																			
1 2 5 Duran glass, TG-I, US																			
1 3 0 PVDF, TV-SS, metric																			
1 3 5 PVDF, TV-SS-I, US																			
Peristaltic Pumps ²⁾																			
0 without peristaltic pump																			
1 CPsingle X2 with hose nipple, angled																			
3 CPsingle X2 with screw connection, metric/US																			
Sample Gas Pumps ¹⁾																			
0 without sample gas pump																			
1 P1.3, PVDF, bottom mounted																			
2 P1.3, with bypass valve, bottom mounted																			
6 P1.3, PVDF, mounted externally																			
7 P1.3, with bypass valve, mounted externally																			
Moisture detector ²⁾ / filter																			
0 0 without filter, without moisture detector																			
0 1 without filter, 1 moisture detector with PVDF adapter ³⁾																			
1 0 1 filter, without moisture detector																			
1 1 1 filter with built-in moisture detector																			
Signal outputs																			
0 0 status output only																			
1 0 Analog output, 4...20 mA additional																			
Delta T control																			
0 0 without Delta T control																			
1 0 Delta T control option																			

¹⁾ Factory installed tubing for suction operation.

²⁾ With this option, the maximum ambient temperature is limited to 50 °C.

³⁾ Also available in stainless steel.

Gas cooler models with two gas paths inside the heat exchanger

The item number is a code for the configuration of your unit. Please use the following model code:

4496	3	1	1	X	2	X	2	X	X	X	X	X	X	X	X	0	X	0	Product Characteristics
Gas cooler types																			
1 TC-MIDI 6111 X2: Ambient temperature 40 °C																			
2 TC-MIDI 6112 X2: Ambient temperature 60 °C																			
Certifications																			
2 for explosive areas																			
Supply voltage																			
1 115 V AC, 50/60 Hz																			
2 230 V AC, 50/60 Hz																			
Heat exchanger																			
2 6 0 Stainless steel, DTS, metric																			
2 6 5 Stainless steel, DTS-I, US																			
2 6 1 Stainless steel, DTS 6, metric ¹⁾																			
2 6 6 Stainless steel, DTS 6-I, US ¹⁾																			
2 7 0 Duran glass, DTG, metric																			
2 7 5 Duran glass, DTG-I, US																			
2 8 0 PVDF, DTV, metric ¹⁾																			
2 8 5 PVDF, DTV-I, US ¹⁾																			
Peristaltic Pumps ⁴⁾																			
0 without peristaltic pump																			
2 CPdouble X2 with hose nipple, angled																			
4 CPdouble X2 with screw connection, metric/US																			
Sample Gas Pumps ³⁾																			
0 without sample gas pump																			
1 P1.3, 1 gas path, PVDF, bottom mounted																			
2 P1.3, 1 gas path, with bypass valve, bottom mounted																			
6 P1.3, 1 gas path, PVDF, mounted externally ²⁾																			
7 P1.3, 1 gas path, with bypass valve, mounted externally ²⁾																			
Moisture detector ⁴⁾ / filter																			
0 0 without filter, without moisture detector																			
0 1 without filter, 1 moisture detector with PVDF adapter ⁵⁾																			
0 2 without filter, 2 moisture detectors with PVDF adapter ⁵⁾																			
1 0 1 filter, without moisture detector																			
1 1 1 filter with built-in moisture detector																			
2 0 2 filters, without moisture detector ²⁾																			
2 1 2 filters, 1 moisture detector ²⁾																			
2 2 2 filters, 2 moisture detectors ²⁾																			
Signal outputs																			
0 0 status output only																			
1 0 Analog output, 4...20 mA additional																			
Delta T control																			
0 0 without Delta T control																			
1 0 Delta T control option																			

¹⁾ Condensate outlets only suitable when connecting peristaltic pumps.

²⁾ External sample gas pump P1.3 only allows 1 filter.

³⁾ Factory installed tubing for suction operation.

⁴⁾ With this option, the maximum ambient temperature is limited to 50 °C.

⁵⁾ Also available in stainless steel.

Consumables and accessories

Item no.	Description
45 10 008	Automatic condensate drain AK 5.2 (pressure operation only)
45 10 028	Automatic condensate drain AK 5.5 (pressure operation only)
44 10 004	Automatic condensate drain AK 20 (pressure operation only)
44 10 001	Automatic condensate drain 11 LD V 38 (pressure operation only)
41 02 00 50	Replacement filter element F2-L; Unit 2 count
91 44 05 00 38	Cable for cooler temperature analog output 4 m
44 10 00 5	Condensate trap GL1, 0.4 L
44 92 00 35 012	Norprene replacement hose with angled connections for peristaltic pump 0.3 L/h
44 92 00 35 016	Norprene replacement hose with one angled connection and one screw connection (metric) for peristaltic pump 0.3 L/h
44 92 00 35 017	Norprene replacement hose with one angled connection and one screw connection (US) for peristaltic pump 0.3 L/h
42 28 00 3	Bellow for P1 pump
90 09 39 8	O-ring for bypass P1 pump
42 28 06 6	Set inlet/outlet valves 70 °C for P1 pump