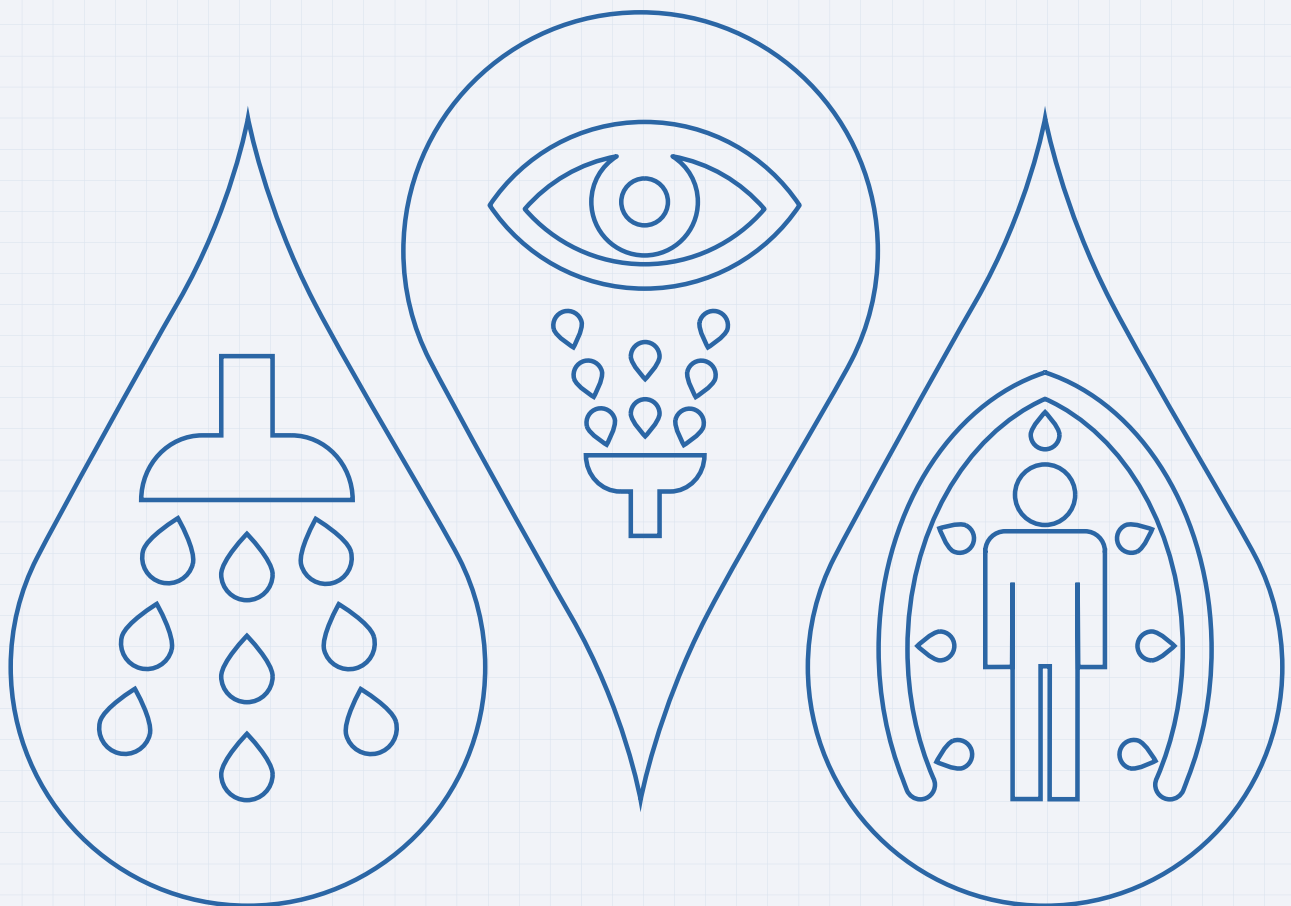


HUGHES SAFETY SHOWERS

» Europe's leading manufacturer of emergency safety showers, eye/face wash and decontamination equipment



Contents

About Hughes	3
Why do I need a safety shower or eye/face wash unit?	4 - 5
Introducing Justrite Safety Group	6 - 7
What do I need to consider when buying a safety shower or eye/face wash unit?	8
Emergency safety showers and eye/face washes for all climates and environments	10 - 15
Engineered Solutions – custom made products to meet your exact needs	16
Customisation in action	18 - 19

1968

OVER 50 YEARS OF MANUFACTURING EXCELLENCE

JD Hughes Fabrications, founded in 1950, were erecting pipework in the petrochemical industry when an unfortunate accident became the impetus for developing safety showers and eye/face washes – long before current HSE/COSHH requirements. The products were soon in demand, so in 1968 the company began to specifically manufacture emergency shower and eye/face wash equipment. Now an international market leader and part of the Justrite Safety Group, Hughes has sites and customers across the world.



WORLDWIDE DISTRIBUTION

Manufacturing and offices in the UK, USA, Germany and the Middle East supported by a network of distributors.

ISO9001: 2015 CERTIFIED

- British Standards Institute Committee member
- British Safety Industry Federation member
- British Safety Council member



ABOUT HUGHES

ADDITIONAL SERVICES...

- Customised Solutions Project Management Team
- Engineering and CAD Team
- Service and Support Team
- Legionella testing
- Free site surveys
- Hire fleet



WE SPECIALISE IN...



Emergency Safety
Showers



Eye/Face Wash
Equipment



Decontamination
Equipment

SOLUTIONS FOR ALL INDUSTRIES

For example:

- | | |
|-------------------|----------------------|
| • Water utilities | • Manufacturing |
| • Oil and gas | • Agriculture |
| • Offshore | • Military |
| • Pharmaceutical | • Emergency services |



EUROPEAN & INTERNATIONAL STANDARDS

- EN15154
- ANSI Z358.1-2014
- DVGW certified





Why do I need a safety shower or eye/face wash unit?

Whatever industry you're in, there's nothing more important than keeping your workforce safe – that's where we come in.

Our emergency safety showers, eye/face wash units and decontamination equipment provide you with a safer working environment, greater protection against serious injury and peace of mind that you're compliant with crucial safety standards.

These high-quality products are used in a wide range of industries, including oil and gas, offshore, manufacturing and agriculture. They're the first line of defence in the event of an accidental splash or spillage on site. Using them, you can quickly wash off potentially hazardous substances. Without them, you could risk serious injury, permanent disability or even death.

How can Hughes help me?

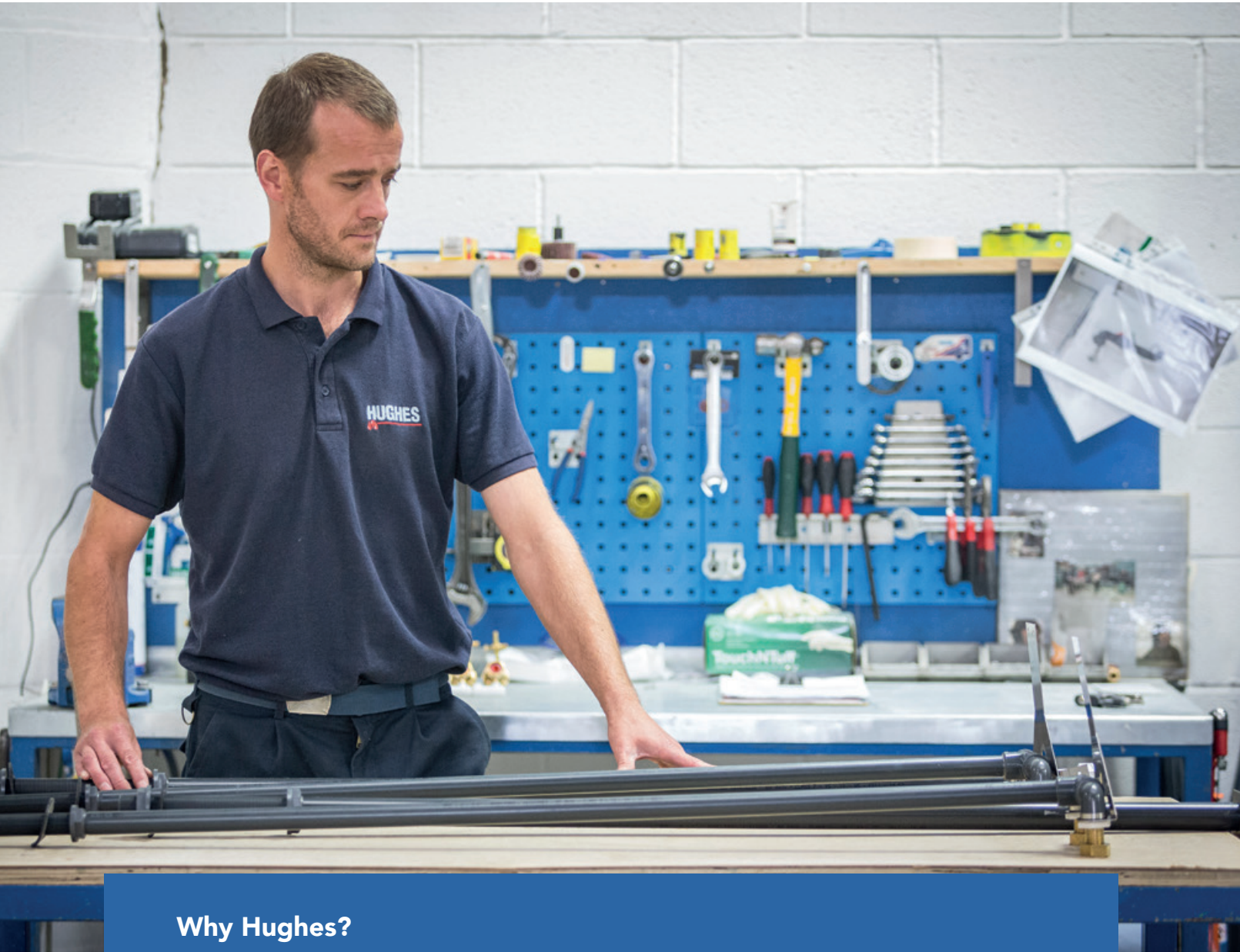
We provide a complete package that takes care of everything, so you don't have to. This includes manufacturing, installing and servicing safety showers and eye/face washes for a wide range of environments – from deserts to Arctic conditions.

In order to fully assess your needs, Hughes' experts are available to carry out free site surveys and recommend the right safety showers for your site. If necessary, we can engineer customised solutions to meet any unique requirements. (See Page 16 for more information.)

You can also take up a service contract with us to help prolong the lifespan of your equipment and ensure its safe operation. This guarantees regular checks from highly-skilled engineers who can identify potential problems to prevent serious failures.

Additionally, we offer the option of on-site legionella testing as part of your regular service – to ensure your showers and eye/face washes remain free from harmful contamination.

Hughes' hire service also allows you to keep your workforce protected during short contracts and annual maintenance shut downs, or when buying equipment isn't an option.



Why Hughes?

With a first-class reputation gained from more than 50 years of trading, Hughes is renowned for innovative engineering design, premium-quality products and stringent compliance with European and International standards.

Our company was born of innovation in site safety and has been at the forefront of this field ever since. That's five decades of trusted knowledge and expertise you won't find elsewhere. It's what enables us to fully understand your unique requirements and create customised solutions that meet your needs perfectly.

Quality is our watchword – with all our processes audited to ISO standards, and manufacturers of sustainable, high-quality components in evidence throughout our entire supply chain.

This means that when you buy a product from us, it will be reliable, robust, 100% fit-for-purpose, safety compliant and long lasting.

With sites in the UK, USA, Canada, Germany and the Middle East – and a global network of authorised distributors – you can rest assured you're in safe hands.



Five decades of trusted knowledge and expertise.

Introducing Justrite Safety Group

» Hughes Safety Showers is a portfolio company of Justrite Safety Group. Justrite Safety Group is a growing family of leading industrial safety companies. Together we protect workers, workplaces and the environment with a comprehensive range of industrial safety solutions – from the storage, containment and clean-up of hazardous materials to motion safety, emergency showers, signs, tags and labels.



All Justrite Safety Group portfolio companies are united by deep safety knowledge, long experience, and a commitment to protecting people, property and the planet.



At Justrite, everything starts with safety.



Providing a seamless experience

All of the Hughes Safety Showers products you know and trust will continue to be offered under the Hughes banner. Hughes will maintain its current location, capabilities, personnel and products. Hughes Safety Showers is now part of Justrite Safety Group, which offers the world's largest industrial safety portfolio.

Work with confidence

At Justrite Safety Group, everything starts with safety. We partner with customers to better understand, anticipate and systematically address the safety challenges you face every day. Our experts will survey your entire operation, identifying how to get you into compliance and keep you there. Our mission is to identify workplace vulnerabilities and guide customers in creating an ecosystem of safety – so your team can work with confidence.

Worker and workplace safety

- Cable management
- Emergency showers
- Hazardous storage
- Industrial matting
- Motion safety
- Safety identification products

Environmental protection

- Aerosol recycling
- Ground protection
- Material handling
- Secondary containment
- Spill containment

What do I need to consider when buying a safety shower or eye/face wash unit?

» Whatever industry you're in, there are many important considerations when choosing the right safety showers and eye/face washes for your site. Here are some important ones to get you started:

Do you understand what is recommended and required by local, European and International standards?

Hughes lead the market in our compliance structure, anticipating future needs as well as conforming to all current standards and demands.

Have you consulted your Material Safety Datasheet (MSDS) to identify the chemical and subsequent hazard?

This will provide more detail on the decontamination procedure required for the chemicals in question in the event of an incident or contact with the skin. For example, if ammonia comes into contact with the skin it must be rinsed with water at a temperature of between 25-30C for at least 15 minutes.

Have you consulted your site risk assessment to determine the specific requirements for emergency safety showers or eye/face wash equipment?

Site risk assessments will provide the information you need to understand the location, specification and quantity of equipment required.

Is there an existing site standard and/or specification for emergency safety showers and eye/face washes?

There could be a company specific standard in place that must be adhered to.

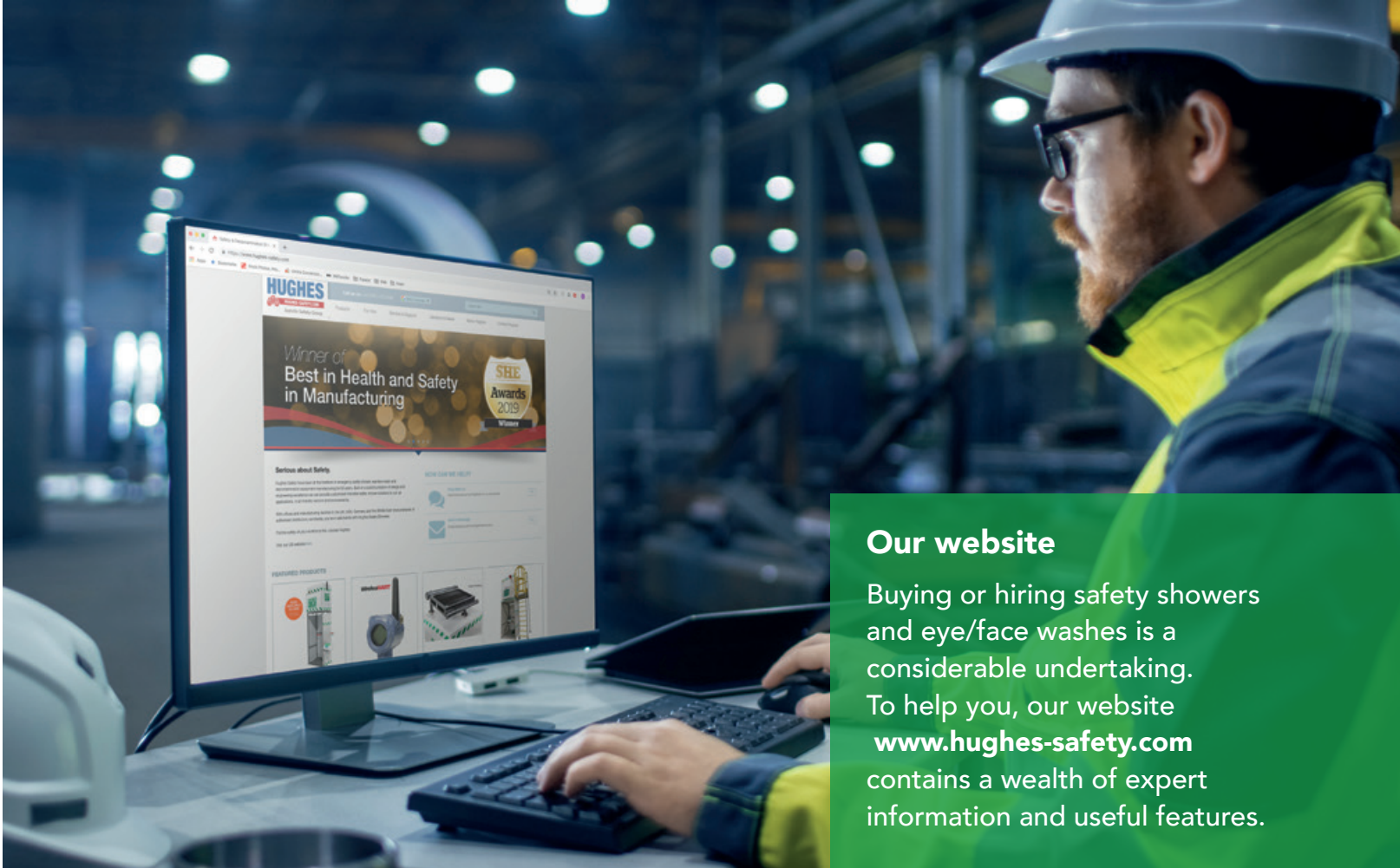
Who will potentially be using the safety showers and eye/face washes and what are their function?

Do employees wear PPE, gas-tight suits or industrial workwear? This will identify the type of models required. For example, our PPE decontamination showers protect both the individual and preserve the lifetime of costly personal protective equipment.

When considering the location of your safety showers and eye/face washes ask yourself the following questions:

- What is the ambient temperature of the location of the hazard?
- Do you have sufficient drainage to contain potentially contaminated water?
- Do you have a potable and reliable water supply with enough pressure at the site of the hazard?
- Is the shower being used in an explosive area?
- Have you considered electrical requirements such as ATEX and IECEx?

With half a century of expertise in this field we can guide you through the purchasing process. Contact the Hughes team to discuss your needs in detail. Call us on **+44 (0)161 430 6618** or email us at **sales@hughes-safety.com**



Our website

Buying or hiring safety showers and eye/face washes is a considerable undertaking. To help you, our website **www.hughes-safety.com** contains a wealth of expert information and useful features.

Essential expert information with just a few clicks

» Our products

Organised within several categories, all our products are listed with a downloadable datasheet containing technical information, functions, capabilities and a GA drawing with components and dimensions.

» The Hub

Go to **www.hughes-safety.com/hub** to see case studies of some of the excellent work we've completed for clients in a range of sectors. You'll also find news of the latest developments that keep us at the forefront of our field – and much more.

» Live chat

When you need to ask a quick question, or really get to grips with something, our online chat function is invaluable. Within seconds, you can connect with our experts, and even request a quote.

» About us

Discover more about Hughes' history and our professional certifications that demonstrate our commitment to excellence – and to supplying high-quality, compliant products.

» Request a quote

Fill in the online form at **www.hughes-safety.com/contact-us** to request a quote and one of our team will contact you. Or use our live chat function.

Go to **www.hughes-safety.com** for all this and more essential information, including international safety standards, our products for hire, and our service, repair and support capabilities.



Emergency safety showers and eye/face washes for all climates and environments

Whether you are operating within a factory or laboratory, or outdoors in the heat of the Middle East – or the cooler climates of Europe during winter, Hughes have a range of safety showers to suit. This simple key will give you an at-a-glance understanding of our products' capabilities and how they can meet your requirements.



SUITABLE FOR HOT CLIMATES



OUTDOOR



SUITABLE FOR COLD CLIMATES



SUITABLE FOR HAZARDOUS AREAS



INDOOR



AVAILABLE TO HIRE (UK, IRELAND,
GERMANY, BENELUX REGION)

Emergency Tank Showers



Essential in environments where a constant water supply is unavailable or where water pressure is unreliable. Choose from a 350L tank or a 1500L ANSI compliant tank providing at least 15 minutes continuous water flow.

The heated and insulated models prevent the possibility of freezing, while for hot climates, the tanks are insulated only to ensure a steady temperature is maintained. For extreme hot climates, our range of cooling options ensures water remains within the tepid range of 16-38C, even in ambient conditions of up to 50C.

For severely cold climates, the polar tank showers incorporate a double-skinned fibreglass insulated cubicle to protect the user from the elements.

Temperature Controlled Showers



Intended for both indoor and outdoor use, these units are designed to remain on standby to deliver warm water for over 15 minutes. The thermostatically controlled mixing valve ensures the temperature is kept constant at between 20-25C, making them particularly suitable for treating casualties who have come into contact with ammonia. Featuring an integral heated water tank, these models can also be used as a warm water source to feed another emergency safety shower in the local vicinity.

Self-Draining Emergency Safety Showers



EXP-SD-18G/45G



EXP-SD-18GS/85G

Designed for hot climates. The power of the sun can heat standing water within the pipes to temperatures as high as 50C.

These models feature a self-draining valve to release potentially scalding water from the standpipe to avoid further shock or injury to the casualty.

Freeze Protected Emergency Safety Showers



EXP-AH-2G



EXP-AH-5GS/45G

Where there is the possibility of the water inside the shower freezing due to the cold ambient temperature, our range of trace-tape heated and insulated models are essential. Select from wall or floor mounted drench showers or combination showers featuring a closed bowl eye/face wash.

Also available jacketed and pre-insulated to provide corrosion free resistance from the elements, without electrical components.

General Purpose Emergency Safety Showers



STD-SD-32K/45G



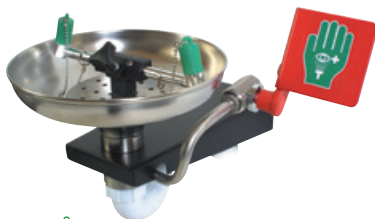
EXP-18GS/45G



EXP-18G

Suitable for use in all applications not subject to the possibility of freezing or overheating. The scope of the range extends from simple wall or ceiling mounted units (perfect where space is at a premium) to cubicle showers with integral drain sumps and free-standing models complete with body spray and eye/face wash.

Eye/Face Wash Equipment



STD-85G



STD-45G



STD-38G



STD-45G/P

Hughes offer an extensive range of plumbed in and self-contained eye/face washes suitable for all climates and environments. Whether you need wall, pedestal, table or bench mounted eye/face washes there is a model to fit your requirements.

Choose from open or closed bowl, plastic or stainless-steel. Our powder coated stainless-steel units are perfect for the laboratory.

Whatever the location, all our emergency eye wash stations are designed to be quick and simple to operate.

For locations that are unsuitable for fixed installations, the portable units enable rapid response and can be used as a secondary safety measure to supplement plumbed in eye/face wash units.

Mobile Emergency Safety Showers



STD-40K

STD-MH-P-1200L

Self-contained mobile units enable a rapid response where no water supply is available, or when existing safety showers are undergoing maintenance. They are ideal as a secondary safety measure to supplement permanent units – and are particularly useful if the site of the hazard moves as a project progresses, such as the shifting demands of a construction site.

PPE Decontamination Showers



DEC-VH-5

DEC-V-2

Protect both the safety of your workforce and preserve the lifetime of costly personal protective equipment (PPE) with this range of decontamination showers. Many models offer a two-stage decontamination process with the incorporation of a detergent and hose brush, followed by a multi-nozzle secondary wash-down for thorough suit cleaning.

Laboratory Range



Wall, ceiling, ring main or floor mounted – the laboratory range is manufactured from powder coated stainless-steel pipework to ensure resistance to corrosive and flammable materials whilst also being easy to clean.

Emergency Response Solutions



PORTAFlex CUPOLA



PORTAFlex 300 16E

In the event of an accident, disaster or attack using chemical, nuclear or biological agents, this portable decontamination equipment is essential and can be deployed quickly and easily.



Engineered Solutions – custom made products to meet your exact needs

Whatever the demands of your industry or environment, we can custom create safety shower and eye/face wash products to fit your exact requirements – thanks to the design and engineering excellence of our experts who are leaders in their fields.

To achieve this, we bring together our vast pool of knowledge and industry experience. Through innovation and collaboration with our customers, we deliver the most effective solutions, whatever the requirement, wherever the project.

As part of the Justrite Safety Group, we have access to an extensive line of industrial safety products including safety cabinets, safety cans, secondary spill containment (spill pallets, bunds), and outdoor chemical storage buildings.

Our services include

- ✓ Project planning – using a dedicated team of mechanical, electrical and instrumentation engineers
- ✓ Customised engineering and design using SolidWorks® CAD software
- ✓ Site surveys and risk assessments
- ✓ Third party certification, inspection and testing to all relevant standards
- ✓ The complete package – design, manufacturing, installation, commissioning, training, after-sales service and extended warranties

Contact our Engineered Solutions team to discuss your specific requirements.

Call us on **+44 (0)161 430 6618**

or email us at **sales@hughes-safety.com**



Customisation in action

» Some excellent examples of how our expertise has created custom solutions to big challenges.

A slick solution for a 'supergiant' oilfield

A remote location. Lack of a constant water supply. Extremes in temperature from -40C to +45C. These were just some of the challenges faced by a supergiant oilfield in Kazakhstan looking for emergency safety showers.

The site prides itself on being one of the largest and safest oilfields in the world. The requirement was for safety showers that would operate in the face of the environmental challenges presented by its size and location.

Our fully customised solution

This involved creating and supplying several different types of unit to suit the different locations of the site.

- Floor mounted safety showers with eye/face wash, featuring stainless-steel pipework were specified for indoor use where a mains water supply was available.

- For the more remote indoor facilities with an unreliable water supply, the same model was specially engineered with the addition of a gravity fed water tank.
- For outdoor use, the Polar Emergency Tank Shower and Polar Cubicle with tubular showers met all the requirements. These units, with double skinned insulated booths, push open doors and air heaters were the ideal solution for the extremes in conditions experienced in this location.

Additionally, remote alarms were supplied for all the safety showers, providing peace of mind to workers operating in such a remote environment. To meet local demands, all electrical equipment was built to meet Russian certification with labels provided in Kazakh, English and Russian.





Refining a standard for a refinery committed to safety

A top international oil and gas refinery on France's western coast approached Hughes to create an engineered solution for a PPE decontamination shower.

Even in the safest refineries, activities such as process sampling, inspection, handling or recharging pose chemical risks. The safety-conscious company wanted an automatically activated shower that allowed an extended damping time to provide additional assurance throughout the decontamination process.

Our customised solution

This was based upon the standard model DEC-D-29. This self-draining, walk-through decontamination shower with multiple nozzles incorporates a double unit and an automatic on/off activation complete with optoelectrical sensors.

The extended damping time of the double unit provided the additional assurance the customer required and ensures operators are fully doused without the chance of passing through the unit too quickly.

The optoelectrical sensors allow the shower to start instantly upon entering, making the unit easy to operate.

As well as complying with regulations and protecting people's health and safety, PPE decontamination showers also keep costly personal protective equipment in better condition for longer.



HEAD OFFICE

Whitefield Rd, Bredbury,
Stockport SK6 2SS, UK
Call us on: +44 (0)161 430 6618
or email: sales@hughes-safety.com

**For details of our international
offices and global distributors
please visit: www.hughes-safety.com**