



Sample gas probe GAS 222.20

In many applications gas analysis is the key for safe and efficient control of process flows, environmental protection and quality assurance. In extractive gas analysis the location of the gas sampling point is crucial for the reproducibility and accuracy of the analysis results.

The specific filter capacity, corrosion resistance and functional equipment requirements for the probe arise from the composition of the sample gas.

However, operating costs are also an important criterion in the selection, as the sampling points are frequently located at hard to access points in the system. Effective particle filter backwashing options and low maintenance characterise the extensive GAS probe series.

Heated probe with downstream filter and weather hood

The downstream filter can easily be removed by turning the handle 90°

The probe body and the area around the screw connection for the heated sample gas line are completely isolated

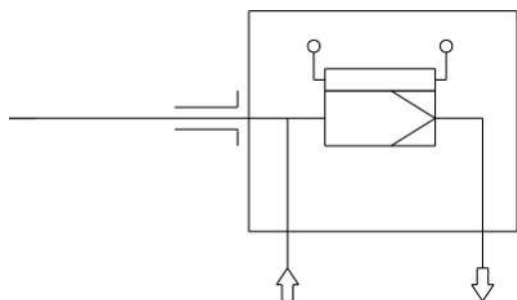
Electronic temperature controller up to 200 °C with low/high temperature alarm and display

For dust loads up to 2 g/m³

This probe is not suitable for use in Ex areas



Flow chart



Technical Data

Gas Probe Technical Data

Probe operating temperature:	max. 200 °C
Ambient temperature:	-20 to +70 °C (can be limited by optional add-ons)
Controller temperature range:	+50 to +200 °C
Low/high temperature alarm:	Alarm adjustable $\pm 5 \dots 30$ K from setpoint, factory preset 15 K Max. switching current 1 A
Electrical data:	230 V, 2.0 A, 50/60 Hz 115 V, 3.8 A, 50/60 Hz
IP rating:	IP54
Max. operating pressure:	6 bar
Parts in contact with media:	Flange: 1.4571 Seals: Graphite/1.4404 and see filter

Ordering instructions

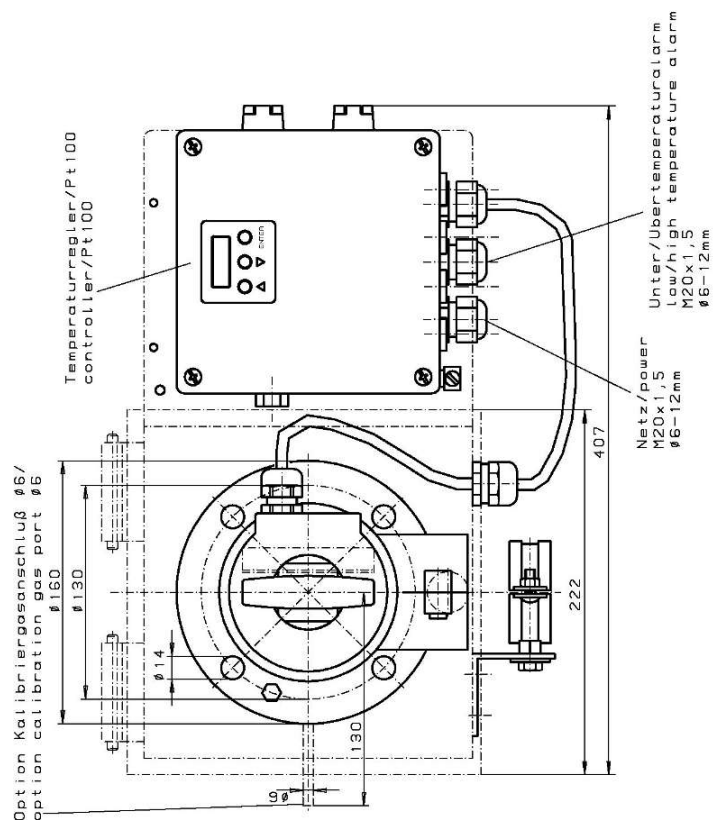
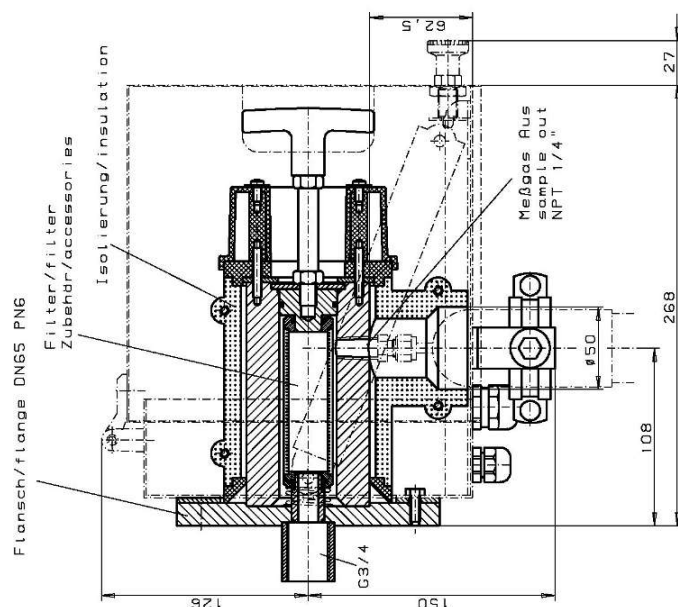
The item number is a code for the configuration of your unit. Please use the following model key:

4622220	0	9	9	0	X	X	X	X	9	9	9	9	9	9	Product Characteristics
															Flange
															DIN DN65 PN6
															Power supply sample probe
															1 115 V
															2 230 V
															Calibrating gas connection
															0 no calibrating gas connection
															1 6 mm
															2 6 mm with check valve
															3 1/4"
															4 1/4" with check valve
															Connection, heated line
															0 No
															1 Yes
															Built-in temperature controller for heated extension
															0 No
															1 Yes

Options

The base unit becomes functional by adding accessories suitable for the application. Please refer to accessory data sheet no. 461099 for information.

Please also refer to data sheet no. 461000 "GAS 222 Gas Probes" for a general description.

[illegible]

Art. Nr. / part. no.	46222220	46222222
Werkstoffe/materials		
Flansch, Kopf / flange, head	1.4571 / SS316Ti	
Betriebstemperatur Sonde/ operating temperature probe	max. 200°C / 392°F	
Heizung / heater		
Temperaturbereich / temperature range	230V 50/60Hz 440W	115 50/60Hz 425W
Alarm einstellbar / alarm adjustable	50 ... 200°C / 122 ... 392°F 15 ... 30°C / 49 ... 54°F vom Sollwert / from set-point	
werkseitig eingestellt / factory set	115°C / 127°F	
max. Schaltstrom / max. current	1A	
Schutzart / degree of protection	IP54	
Umgebungstemperatur / ambient temperature	-20 ... +70°C / -4 ... +158°F	