

## Stand-alone Sign & Label system

**Battery and AC**

**IT Independent**

**Industrial Quality**



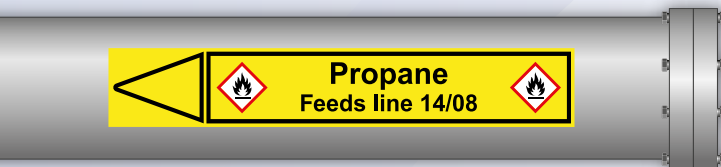
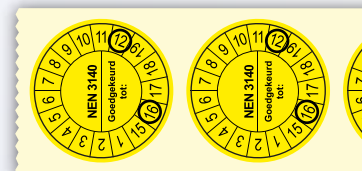
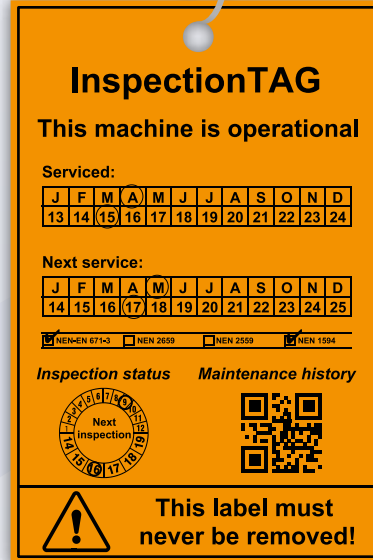
**Six Sigma and LEAN | Safety instructions | Barcodes  
GHS marking | Machine ID | Maintenance Tags  
Inspection labels | Warehouse labels | Pipe marking**

### **TORO - Any time, anywhere!**

The TORO is a unique revolution in Industrial sign and labeling solutions. Fully independent, operating with both battery and mains power and its own integrated operating system - the TORO goes anywhere and delivers so much. With a full colour, 9 inch touch screen, wireless mouse, full size keyboard and pre-installed design software, PDF reader, spreadsheet program and audio video software – the TORO is unbeatable in value for money and in delivering multiple sign and labeling solutions from one 'stand alone' system.



With the TORO you can easily create all of the labels below!



**STANDARD TAPE QUALITIES:**

- **Industrial Vinyl (E300)** - Standard 3-5 year, perfect for most applications.
- **Premium Vinyl (ST700)** - High quality 5-7 year, for higher durability.
- ★ **High-Tack (HT700)** - High tack adhesive, ideal for difficult surfaces like wood, concrete, oil and low friction plastics.
- **Polyester (PT700)** - High tack adhesive, high temperature, low halide - ideal for machine plates and pipes.
- 🔥 **High Temperature Tape (H250)** - High tack adhesive and extra high temperature resistance.



### SPECIAL MATERIALS:

**Reflective Tape (RT500)** - Reflective tape for indoor and outdoor usage.

**Fluorescent Tape (FL500)** - Fluorescent tape with a very high visibility.

**Photoluminescent Tape (RG500)** - Glow-in-the-dark tape for signs that need to remain visible after a power cut.

**Tags (T100)** - Non-adhesive, untearable tags. Available in continuous and die-cut materials.

**Wire-Wraps (WI100)** - Self laminating, wrap around cable and wire marking.

**Metal Detectable Tape** - Locatable by a metal detector, ideal for the food industry.

**GHS Labels** - Pre-printed GHS labels available in several sizes, with choice of max. 4 red diamonds.

For a **FREE sample pack** of our label materials  
 contact us on [info@rebosystems.com](mailto:info@rebosystems.com) or call us on +31 (0)35 601 6941

## TORO - For Industrial labeling – 'On the Move'

The TORO is so self-contained, it even has its own instructional and information videos pre-installed. From health and safety signage to data base connected labels, the TORO can deliver both simple and sophisticated solutions. It has over 40 different materials for every application including: high or low temperatures, oily and difficult surfaces, permanent or removable adhesives, mild or aggressive chemical resistance and more...

### A dependable system, delivered with top class software!



- Professional software with extensive print & design capabilities
- Easy to use Design Wizards speed up production
- Design and edit texts, barcodes, lines, shapes and images
- Advanced functionality for multiple field linking
- Powerful 'form' designer for standardised layouts with user data entry
- Thousands of industrial symbols and icons in compliance with the latest regulations
- Advanced design tools like rich text, linestyles, group, textframes with automatic font size
- Advanced 'tiling' function for larger signs (NiceLabel Pro)
- Easily import data into your labels from data bases and spread sheets (Excel, Acces)
- Microsoft® certified software

### Printer specifications

<b>Printing method</b>	Thermal Transfer
<b>Resolution</b>	300dpi
<b>Speed</b>	Min. 76mm/s (3ips)
<b>Print Length</b>	Max. 762mm
<b>Print Width</b>	Max. 101,6mm
<b>Dimensions</b>	L 260mm x W 342mm x H 223mm
<b>Weight</b>	6,26kg
<b>Memory</b>	1GB SDRAM / 4GB Flash ROM
<b>Operation Interface</b>	1x On/Off button / 4x buttons (Feed, Keyboard release, Screen release, Battery release)
<b>Connectivity</b>	USB-A, USB-B
<b>Agency Listings</b>	RoHS, WEEE
<b>Media Type</b>	Die-cut, Continuous, Tags and Black Mark
<b>Ribbon Type</b>	Resin, Wax/Resin

Visit our comprehensive website to review the large range of material available!

[www.rebosystems.com](http://www.rebosystems.com)



**Rebo B.V.**  
Beckerinhstraat 21  
3762 EV Soest  
Netherlands

☎ +31 (0)35 - 601 69 41  
@ info@rebosystems.com  
🛒 sales@rebo.nl  
🌐 www.rebosystems.com