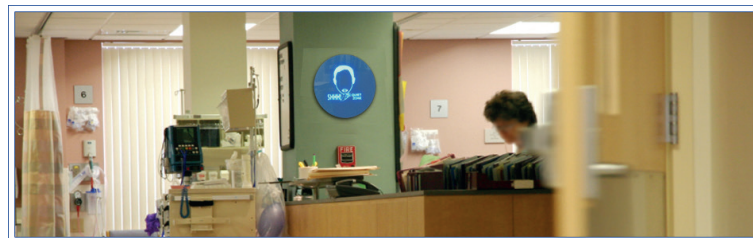


Cirrus

The noise activated warning sign **SoundSign**



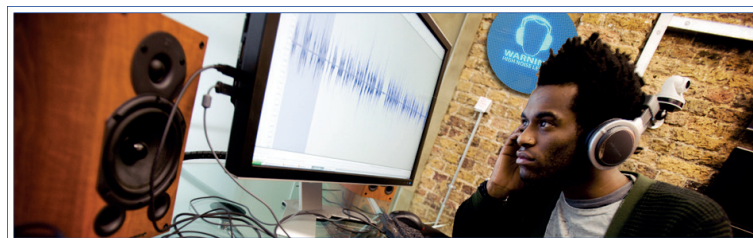
SoundSign™ for Industry



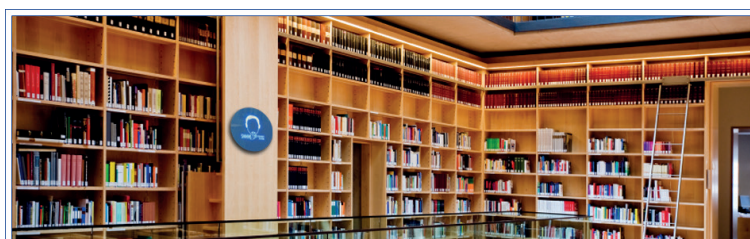
SoundSign™ for Hospitals & Healthcare



SoundSign™ for Schools & Colleges



SoundSign™ for Music & Entertainment



SoundSign™ for Libraries



What is the SoundSign?

SoundSign™ is a highly visible noise activated warning sign that has been designed for use in environments where there is a need to clearly warn or indicate when a preset noise level is reached.

Benefits at a glance

- > Lights up when a preset noise level is exceeded
- > Quick & simple to install
- > Trigger level from 40dB(A) to 114dB(A) for use in any environment
- > High intensity white LED technology for high visual impact and a long operating life
- > Use text and graphics to communicate specific noise level warnings
- > 4 standard designs to cover all applications

In addition to the traditional Noise at Work style sign, the Sound Sign is also available with a range of other graphics and text which allows it to be used in environments where the noise levels may not reach those where hearing protection is required, but where there is still a need to warn or indicate excessive sound levels.

Ideal for Noisy Environments

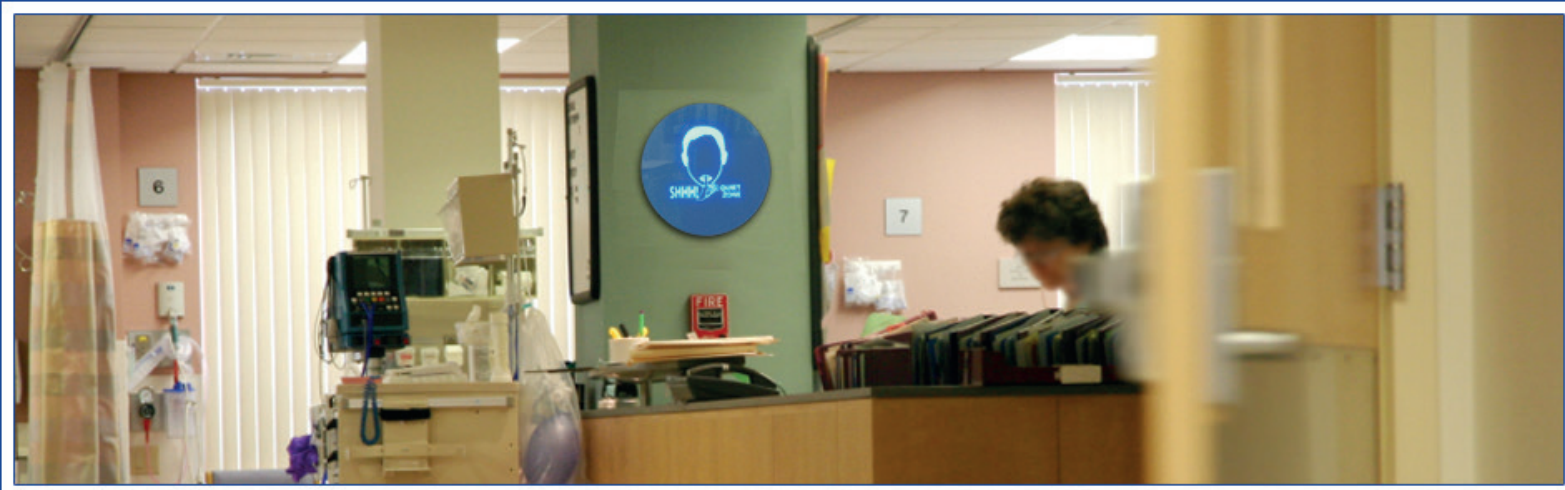
Use the SoundSign™ in noisy environments such as factories, workshops, pubs and nightclubs to warn when noise levels become too high and indicate when hearing protection must be worn. For example, the “Hearing Protection Must Be Worn” version can be used to reinforce the need to wear hearing protection when noise levels reach a set level.

A noise survey may have indicated that the levels will exceed 90dB(A) when certain processes occur but this may happen at random intervals throughout the day. The wearing of hearing protection may not be required at all times and so the use of the SoundSign will inform employees when it is required and when it can be safely removed.

Ideal for Quiet Environments

Use SoundSign™ in quiet locations such as schools, hospitals and libraries to indicate when noise levels must be kept down. Set the SoundSign to trigger at a much lower level, 50dB(A) for example, to ensure that the noise levels in a hospital ward stay within acceptable levels. There is no need to use hearing protection but the use of a clear warning sign can be very effective in controlling and managing noise levels.





Installation & Use

Installation of a Sound Sign is very simple. Select the required trigger level and connect the 12v power supply to the unit. When the noise level measured by the microphone reaches this level, the sign will illuminate and show the warning.

The unit can also be set to keep the warning illuminated for up to 30 seconds after the level has fallen back below the trigger level. This removes the sudden on-off indication that traditional noise warning signs often produce and which can cause confusion as to when hearing protection should be worn. The SoundSign avoids these problems.

The sound level chosen for the trigger point can be set using either the simple level selection on the back of the unit or by using a calibrated Sound Level Meter to provide a reference measurement.

The brightness of the display can be adjusted making the SoundSign ideal for use in hospital and healthcare.

Remote Display Units

The SoundSign is also available as a Remote Display Unit which is controlled by a Master SoundSign.

These units are connected by a simple cable to the Master and up to three can be daisy-chained together so that a wide area can be covered.

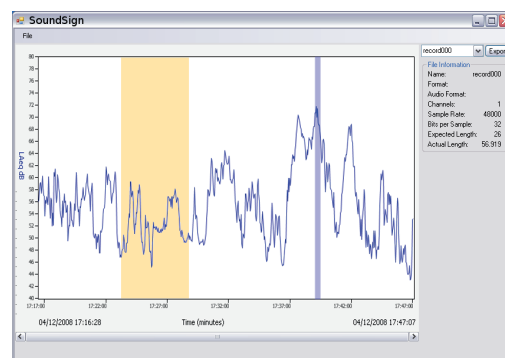
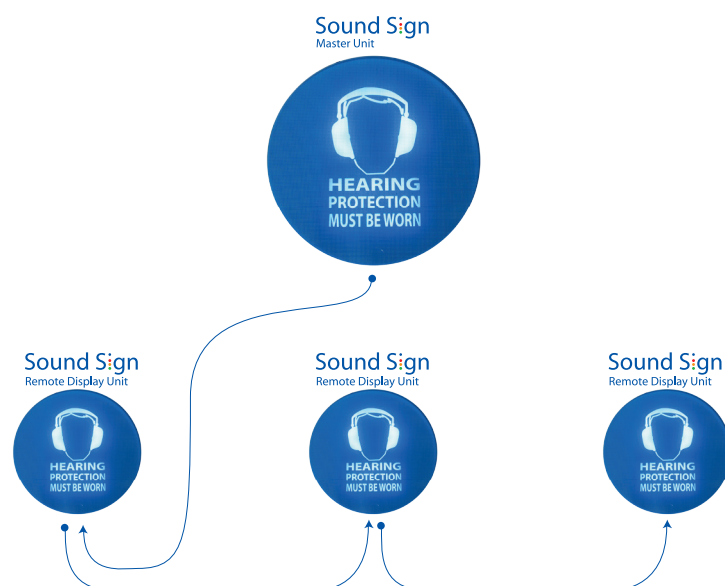
The Remote Display Units will duplicate the Master Unit warning using the same configuration of trigger level, time weighting and illumination options.

Record & Store with the USB Data Logger

The SoundSign can be upgraded quickly and easily by adding the CR:203 USB Data Logger. This unit simply plugs into the SoundSign and can record noise levels for long periods of time.

The Data Logger can be programmed to start recording at a specific time and date and run, for example, over an 8 hour shift.

The Data Logger can be plugged directly into a PC and the software supplied will display a graph of the recorded noise levels, allow the information to be printed, exported and annotated for reference.





Specifications

Application	Noise activated warning sign
Trigger Level	40dB(A) to 114 dB(A) in 1dB Steps
Microphone	MK:112
Frequency Weighting'	A' Weighting to IEC 61672-1:2002
Time Weighting	Slow to IEC 61672-1:2002
Visual Indication	High intensity white LED with four standard designs User selectable brightness levels
Display delay time	None or 30 seconds
External Power	2.1mm Power Jack, 12v DC via CU:200 Mains Power Supply
Output Connector	Control for Remote Display Units via standard 2.1mm Power
	Up to three Remote Display Units can be powered from a Master Unit
Dimensions	12"mm diameter, 2"mm depth
Weight	1.3lbs (0.6kg)
Mounting	2 x Keyhole mounting slots
Data Logging	CR:203 USB Data Logger with 32,000 Samples of LAS (Slow 'A' Weighted Sound Level) User Selectable 1 second (9 hours), 10 seconds (3.7 days), 1 minute (22 days) sampling

Supplied Accessories

CR:201 Sound Sign Master Unit:	CU:200 Mains Power Supply ZL:206 5m Power Extension Cable
CR:202 Remote Display Unit	ZL:207 10m Inter-connection cable to Master Unit
CR:203 Data Logging	USB Data Logger & Software CD

Optional Accessories

ZL:207	10m Inter-Connection Cable for Sound Sign Units
ZL:202	2m Microphone Extension Cable for Sound Sign Master Unit for use with MV:200C & MK:215
ZL:205	5m Microphone Extension Cable for Sound Sign Master Unit for use with MV:200C & MK:215
ZL:210	10m Microphone Extension Cable for Sound Sign Master Unit for use with MV:200C & MK:215
CU:200	Mains Power Supply for CR:201 SoundSign Master Unit
MV:200C	Preamplifier
MK:215	Microphone Capsule

Ordering Information

The CR:201 Master Unit and CR:202 Remote Unit are available with a selection of standard designs which are listed below.

Custom design options are available. Please contact Cirrus Research for details of these custom design options.

CR:201 Sound Sign Master Unit with microphone & mains power supply

- CR:201/1 Sound Sign Master Unit with "Hearing Protection Must Be Worn"
- CR:201/2 Sound Sign Master Unit with "Warning High Noise Levels"
- CR:201/3 Sound Sign Master Unit with "Caution High Sound Levels"
- CR:201/4 Sound Sign Master Unit with "SHH! Quiet Zone"

CR:202 Sound Sign Remote Display Unit with 10m inter-connection cable to Sound Sign Master Unit

- CR:202/1 Sound Sign Remote Unit with "Hearing Protection Must Be Worn"
- CR:202/2 Sound Sign Remote Unit with "Warning High Noise Levels"
- CR:202/3 Sound Sign Remote Unit with "Caution High Sound Levels"
- CR:202/4 Sound Sign Remote Unit with "SHH! Quiet Zone"

CR:203 USB Data Logging Plug-in for Sound Sign Master Unit with PC software



FM 531001

EMS 552104

Acoustic House
Bridlington Road
Hunmanby
North Yorkshire
YO14 0PH
United Kingdom

T: 0845 230 2434
T: +44 1723 891655
F: +44 1723 891742
E: sales@cirrusresearch.co.uk
W: www.cirrusresearch.co.uk

