

Summary	
Product	Lakeland ALM Series 700
Description	Proximity Suit designed for high radiant temperatures and ambient temperatures. The aluminised glass outer provides protection with flexibility. With neoprene moisture/steam barrier & added fibreglass insulation layer
Fabric & weight	Triple layer with outer aluminised fibreglass and moisture barrier – see below
Styles	(see below)
Seam Type	Safety Seam with FR para aramid thread
Colour	Reflective aluminised silver



CE Certification		
EN Standard*	Description	Result
EN ISO 13688: 2013	Protective Clothing : general Requirements	Pass
EN ISO 11612: 2008	Clothing to protect against heat and flame	A1/A2/B3/C4/F3

* All Lakeland garments are certified to the latest version of standards where possible

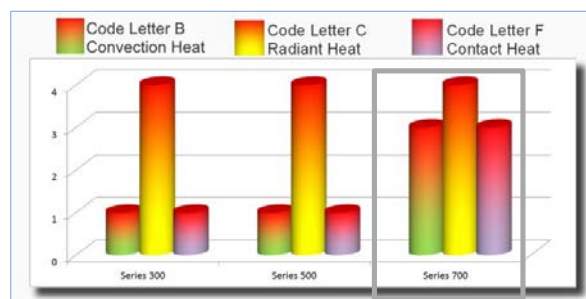
Mechanical Properties			
EN Standard	Description	Result	EN Class
EN 13934	Tensile Strength	3050N (Mean)	Pass
ISO 9073	Trapezoidal tear md/cd	69/66/N	Pass
ISO 13935-2	Seam Strength	530N	Pass

Heat and Flame Properties		
Standard	Description	Result
ISO 15025 A1	Flame Spread Face Ignition	Class 1 + 2 Pass
ISO 15025 A2	Flame Spread Edge Ignition	Class 1 + 2 Pass
ISO 17493	Heat Resistance	Pass
ISO 9151	Convective Heat	87.3s B3
ISO 6942	Radiant Heat	>600s C4
EN 12127	Contact Heat	41.9s F3

Fabric Construction	
Inner Layer	Nylon taffeta with neoprene moisture/steam barrier
Mid Layer	160gsm fibreglass thermal liner C/w aluminium foil
Outer Layer	545gsm aluminised fibreglass – Gentex “Dual Mirror”®

Note: Aluminised garments use the reflective “mirror” properties of the fabric surface to enhance heat resistance. Dirty or soiled garments may not work efficiently, fabric can be wiped clean with a light detergent

Heat Protection Performance – CE Classes



Key features

- Protection against high/low ambient heat
- Nylon Taffeta with aluminised glass outer material for efficient heat protection with flexibility
- Hood with gold reflective face shield.
- Not to be used for fire entry

Suggested applications

- Power generation
- Cement manufacture
- Foundries
- Ceramic and glass manufacture
- Chemical processing

Available Styles			
Description	Code	Description	Code
Hood Without Helmet	710-E	Coverall	722
Hood with BA Accommodation (without helmet)	710BA-E	Coverall with BA Accommodation	722BA
Reduced Peak Safety Helmet	407500	Trousers with Braces (Suspenders)	730
Jacket	720	Mitts	744-02N
Jacket with BA Accommodation	720BA	Boots	755
Storage Bag	PKG15-E	Apron/Gown	725

Other Information

ALM Garment Sizing

Lakeland ALM garments are designed to be over sized and should be baggy and loose to wear. They are generally worn over other clothing and the effectiveness of any heat protective workwear is reduced if garments are worn tightly fitting. Ensure undergarments are made from natural fibres and from any fabric that may melt or ignite in high heat environments.

ALM Coveralls, Jackets, Trousers (pants) and Aprons are supplied in standard sizes as detailed below, please contact sales-europe@lakeland.com to discuss any special sizing required.

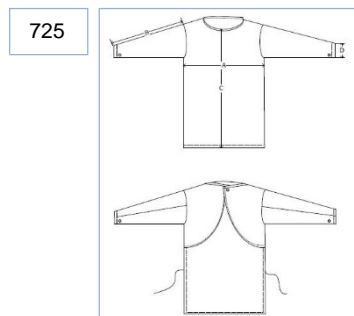
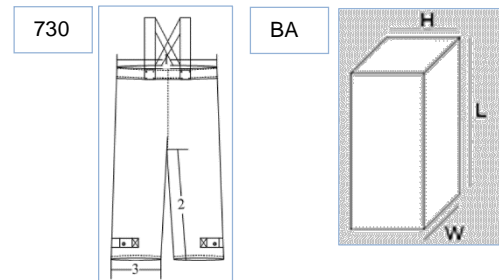
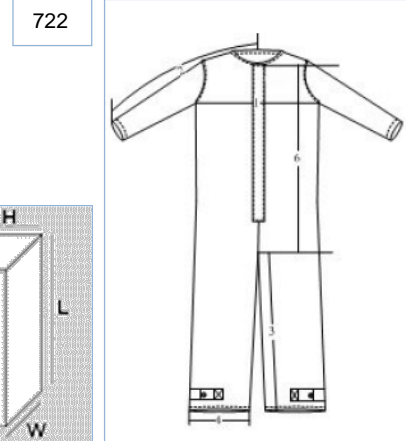
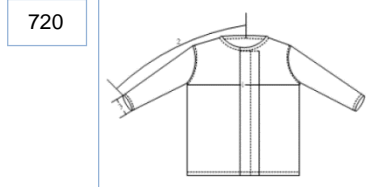
720	M	L	XL	2XL
Chest	76	81	86	91
Sleeve	93	94	95	96
Cuff	18	18	18.5	19

730	M	L	XL	2XL
Waistline	58.3	63.10	68.10	73.3
Inseam	59	60	60	61
Foot Opening	121	121	121	121

722	M	L	XL	2XL
Chest	72	74	78	80
Sleeve	92	94	96	98
Inseam	70	70	70	70
Foot Opening	35	36	37	38
Cuff	17	17	17	17
Body Length	88	91.5	93	96.5

BA Pouch	M
Length	57
Height	18
Width	22

725	M	L	XL	2XL
Chest	67	72	77	82
Sleeve	59	60	60	61
Height	121	121	121	121
Cuff	16	17	17	21



Size Chart – based on size of wearer NOT garments

Size	Body Height	Chest
S	164-170cm	84-92cm
M	170-176cm	92-100cm
L	176-182cm	100-108cm
XL	182-188cm	108-116cm
XXL	189-194cm	116-124cm
XXXL	194-200cm	124-132cm

Other Design Features

- Coveralls: Circle Collar, 5 x Brass snaps & FR Nomex® Zip front Closure. 1 Snap cuff adjusters, safety stitching with para aramid threads
- Jackets: Circle Collar, 5 x Brass snaps & FR Nomex® Zip front Closure. 1 Snap cuff adjusters, safety stitching with para aramid threads
- Trousers: FR Brass snaps front fly, FR Brass snaps for braces (Suspenders), 2 Snap ankle adjusters, safety stitching with para aramid threads

Cleaning, Storage, Shelf-life and Disposal

Cleaning: Soiled garments will not work effectively. Dirt and soot can be wiped clean with a light detergent. Oil and grease can be removed with dry-cleaning solvents (not containing isopropanol or perchloroethylene which may react with the surface). Clean solvents with water and then after **cleaning dry with a clean, dry, cloth. Do not use cleaning agents containing ammonia, chlorine or abrasive agents. Do not machine wash.**

Storage: Store in cool, dry & well ventilated areas where possible. Use fans if appropriate. Keep away from direct heat and sunlight, hang in ample space to avoid folding or creasing.

Shelf-life: Garments should be kept clean and free from soiling. Do not use soiled or contaminated garments as this may affect performance. Garments kept clean and in good condition can be used for 5 years or more *if clean and undamaged*

Disposal: Can be disposed of by incineration or to landfill according to local regulations. However, any garments contaminated with chemicals must be disposed of according to the requirements of the chemical or decontaminated before disposal.